



#LOVEYOURSTORY



University of  
**CUMBRIA**

# YOUR STORY STARTS HERE

**96%**  
OF OUR STUDENTS ARE IN  
WORK OR STUDY WITHIN 15  
MONTHS OF GRADUATING



University of  
**CUMBRIA**

**OPEN DAY PROGRAMME  
AMBLESIDE**

# HELLO! LET'S GET YOU CHECKED IN

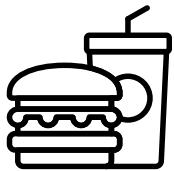


## Registration

09:30 - 10:00am

The Barn

Once you have arrived on site, our friendly teams will guide you to the event registration area. Checking in is key to making sure you get your welcome bag, event programme and get your day off to a great start.



## A bite to eat and drink

Need a place to stop head to the Barn where you will find complementary refreshments when you arrive. A great place to buy lunch and meet other students.



# WHAT'S ON TODAY?



Welcome talk

1



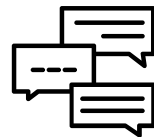
Explore your course

2



Support talks

4



Take a tour

3



Support information fair

5



Course information fair

6

1

## WELCOME TALK

10:00 Charlotte Mason Building . Pop along to our welcome talk to find out about our Ambleside Campus and what makes the University of Cumbria so unique and special.

2

## EXPLORE YOUR COURSE

There are multiple ways to find out about our courses, from spending time in the facilities you will be learning in, to attending course talks, hands on interactive sessions and one to one advice.

3

## TAKE A TOUR

Our campus and accommodation tours run throughout the day. Led by expert staff and Student Ambassadors, check out our state of the art facilities and the place that our students call home.

4

## SUPPORT

Wondering what support you will receive from the University of Cumbria. We are with you from the first day your journey begins. Helping you with your application, money matters, support with specialist requirements, academic advice and guidance, student life and accommodation.

5

## SUPPORT INFORMATION FAIR

12:00 - 3:00 The Charlotte Mason Building Our friendly Support Services teams are on hand throughout the day on a one to one drop in basis. Each has their own area where you can ask questions about your application, money advice, student life, disability and learning difficulty support.

6

## COURSE INFORMATION FAIR

1:30 - 3:00 The Charlotte Mason Building . So you've attended some of our amazing course sessions and have more questions? Head over to our course information fair where our experts are waiting to chat about their courses and answer any more questions that you have.

# EXPLORE YOUR COURSE

There are multiple ways to find out about our courses, from spending time in the facilities you will be learning in, to attending course talks, hands on interactive sessions and one to one advice.

Our classrooms are the great outdoors so please bring your outdoor clothing and footwear for a great interactive activity. More detail for our interactive sessions will be sent to you nearer the time of the event.

## OUTDOORS AND FORESTRY

### Forestry and Forest Management & Woodland Ecology and Conservation

11:00	Course Talk where you will meet your academic staff and students and find out everything about your course.	Charlotte Mason Building Leadership Centre
-------	---	--

### Outdoor Adventure and Environmental Studies, Outdoor Education & Outdoor Leadership

11:00	A great opportunity to get details about all outdoor programmes and opportunities in the future. Looking at extra curricular activities such as UpSkill and National Governing Body Awards. Enjoy a facilities tour and everything available to you off site.	Charlotte Mason Building Franklin and Heelis
-------	---	--

## SCIENCE AND CONSERVATION

### Animal Conservation Science

11:00	Course Talk where you will meet your academic staff and students and find out everything about your course.	Charlotte Mason Building 0.11 Lab
-------	---	-----------------------------------

### Marine and Freshwater Conservation

11:00	Course Talk where you will meet your academic staff and students and find out everything about your course.	Charlotte Mason Building 0.11 Lab
-------	---	-----------------------------------

### Geography

11:00	Get an insight into the programme and life as a student. Spend time getting to know our academic staff and the course in more detail.	Charlotte Mason Building Leadership Centre
-------	---	--



## POSTGRADUATE COURSES

### MA Outdoor and Experiential Learning

12:30

Your time to ask all those questions and explore if the course is right for you. Our Academic members of staff are more than happy to give you all the information you need.

Charlotte  
Mason  
Building

### MA Literature, Romanticism and the English Lake District

12:30

Your time to ask all those questions and explore if the course is right for you. Our Academic members of staff are more than happy to give you all the information you need.

Room  
Charlotte  
Mason  
Building 0.05



# WE'RE HERE FOR YOU

Our range of support talks are designed to give you the information that you need to apply for your course, student finance and much more.

## SUPPORTING YOU AT UOC

### 10:30 The Charlotte Mason Building

Wondering what support you will receive from the University of Cumbria? Join us to find out more about our Students' Union and what our Student Support can offer you throughout your student experience.

We are with you from the first day your journey begins. Helping you with your application, money matters, support with specialist requirements, academic advice and guidance, student life, accommodation and much more.

We are here to help you through all the stages of becoming a student with us, our dedicated team will be with you when ever you need them.

## SUPPORT INFORMATION FAIR 1:30 - 3:00 - THE BEEHIVE

Our friendly Support Services teams are on hand throughout the day on a one to one drop in basis. Each has their own area where you can ask questions with Money Advice, Student Life, Disability and Learning Difficulty support. Admissions will be available via appointment on teams. (Please book at registration)

## COURSE INFORMATION FAIR 1:30 - 3:00 - THE BEEHIVE

So you've attended some of our amazing course sessions and have more questions? Head over to our course information fair where our experts are waiting to chat about their courses and answer any more questions that you have.

We do things a little differently here at Ambleside and if you are travelling the day before, why not explore everything Ambleside has to offer. We have some great restaurants, bars and coffee shops for you to enjoy.



# ACCOMMODATION

Take a walk down to our accommodation where we have an open house. Explore your new home and feel free to ask questions to our Accommodation Officer.

Head to Carrock Halls to check out on-site accommodation throughout the day. Get a feel for where you could be living, by exploring our on-site halls of residence, Carrock Halls. You will get the opportunity to see the on-site halls of residence, check out the kind of room you could be staying in and explore the shared facilities.

# CAMPUS TOURS

12:00, 12:30, 1:00, 1:30, 2:00, 2:30

Join your tour point outside the Barn

Get a feel for where you will be studying and find out what makes our Ambleside campus so unique. Our expert staff and Student Ambassadors will take you on a 30-minute tour of your campus showing you our teaching and study spaces, specialist course facilities and much more.





# LOVE YOUR INSTITUTE

# OUR INSTITUTES

Will your story be one of changing the world? For you, studying at university is about gaining the skills you need to go on and work towards the greater good of society.

Will your story be one of striving for a particular career? For you, your university education needs to catapult you into your dream career, where you stand out against your competitors with an experienced edge.

Will your story be one of pursuing your passion? For you, studying at university is about getting the chance to explore your interests much more. A career will come in the future, but for now it's about the experience and developing yourself. Whatever you want your story to be and whatever your reasons for wanting to study at university, we have hundreds of courses across four specialist institutes, which offer a range of flexible multidisciplinary courses: Institute of Science and Environment; Institute of Health; Institute of Education, Arts & Society; and Institute of Business, Industry and Leadership.

Love your story with them.



Education,  
Arts &  
Society



Health



Science &  
Environment



Business,  
Industry &  
Leadership

# YOUR HOME AT CUMBRIA

Imagine waking up to the smell of coffee brewing and the sound of flatmates chatting. Leave the comfort of your warm, cosy bed and open your curtains to a view of green campus and old heritage stone walls, or the stunning London city skyline, or maybe the rolling Lake District hills.

For first year students, accommodation is at the heart of the university experience, where lifelong friendships are made, culinary inventions are shaped, and memories of celebrations are created.

Whichever location you decide, this is your home and your story.

 **AFFORDABLE LIVING**

**EN-SUITE AND SHARED FACILITIES** 

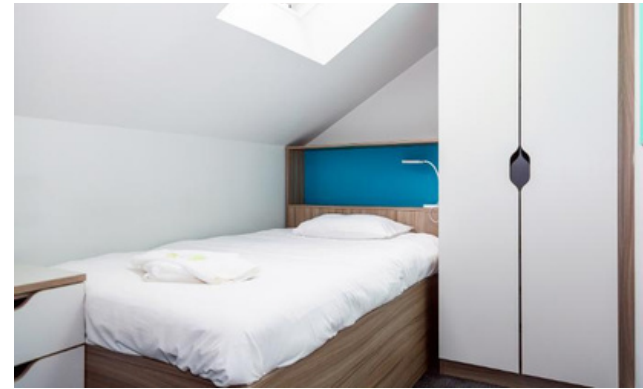


**GREAT LOCATIONS CLOSE TO CAMPUS**

**YOUR RIGHT TO A QUALITY HOME**

**THE ACCOMMODATION CODE** LINE GUIDELINES

**SAFE AND GOOD QUALITY ACCOMMODATION**



## FELL COURT

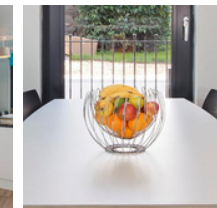
LOCATION: Rydal Road, Ambleside

AVAILABILITY: 71 bedrooms, within 7 town houses

ROOM TYPE: En-suite, open plan kitchen dining and lounge

STUDENTS PER FLAT: 8-11 students

PRICE: £131.00 PW



## FAIRFIELD HALLS

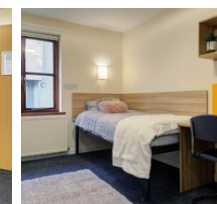
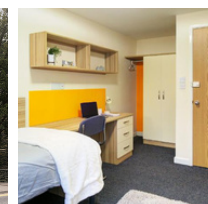
LOCATION: Rydal Road, Ambleside

AVAILABILITY: 40 bedrooms

ROOM TYPE: En-suite, communal kitchen spaces per floor, with social lounge/common room on the ground floor.

STUDENTS PER FLAT: 10 students

PRICE: £116.00 PW







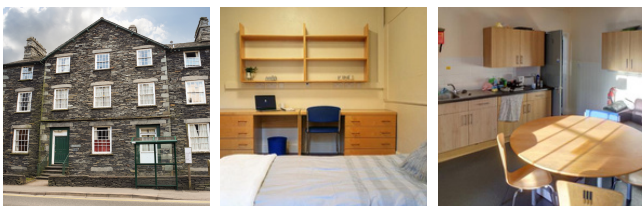
## HELVELLYN HALLS

LOCATION: Rydal Road, Ambleside

AVAILABILITY: 20 bedrooms

ROOM TYPE: Mix of standard and large single, spread across 3 floors

PRICE: £96.00 PW standard single, £104.00 PW large single.



## THE COTTAGES

LOCATION: Nook Lane, Ambleside

AVAILABILITY: 4-5 students

ROOM TYPE: Self-catered standard and large single rooms, with both a front garden and a rear yard.

PRICE: £96.00 PW standard single, £104.00 PW large single.



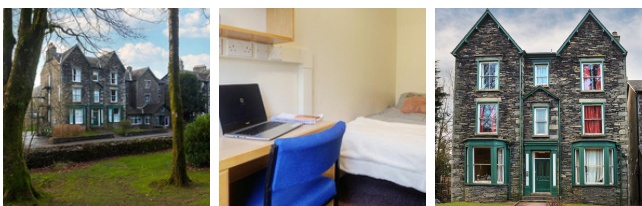
## WANSFELL HALLS

LOCATION: Rydal Road, Ambleside

AVAILABILITY: 11 bedrooms

ROOM TYPE: Mix of standard and large single, communal kitchens and dining areas, also with access to the social lounge based in Fairfield Halls.

PRICE: £96.00 PW standard single, £104.00 PW large single.





# LOVE YOUR CAMPUS

# AMBLESIDE

As the only UK university campus within a UNESCO World Heritage Site, our Ambleside campus offers the opportunity to study in one of the UK's most stunning locations: the Lake District National Park. Explore the breathtaking Lake District and level up your social media game with gorgeous shots of fells, picturesque lakes, and all your outdoorsy adventures. Picture yourself paddleboarding with friends across Lake Windermere or hiking some of the UK's most stunning peaks – you'll truly be living your best student life in Ambleside.

But it's not just about the outdoors – after a day of exploring, cosy up in a café with a hot chocolate, make the most of our vibrant restaurant scene, or grab drinks with course-mates at one of Ambleside's buzzing bars and pubs. And, for a touch of city life, the lively cities of Lancaster, Carlisle and Preston are all within easy reach.

Join us in Ambleside for a truly unique student experience, surrounded by unbeatable natural beauty and endless opportunities for adventure.








FIND OUT MORE

# GET IN TOUCH

Let us know how we did and what you thought of your day. Scan the QR code to complete a quick survey. As a thank you for sharing your feedback you will have the opportunity to enter our prize draw for a chance to win an Amazon gift card!



## CONTACT US

-  universityofcumbria
-  @cumbriauni
-  @cumbriauni
-  01228 588588
-  enquirycentre@cumbria.ac.uk

## CHAT TO A STUDENT, SCAN THE QR CODE BELOW



# PLAN YOUR DAY

---

9:30am

---

10:00am

---

10:30am

---

11:00am

---

11:30am

---

12:00pm

---

12:30pm

---

1:00pm

---

1:30pm

---

2:00pm

---

2:30pm

---

3:00pm

---

# AMBLESIDE CAMPUS

## UNIVERSITY BUILDINGS

- 1 The Barn
- 2 Beehive
- 3 Borrowdale
- 4 Charlotte Mason Building (CMB)
- 5 Langdale (LD)  
inc. Percival Lecture Theatre
- 6 Low Nook
- 7 Millet
- 8 Rigg Cottage
- 9 Scale How
- 10 Stockgyll
- 11 Estates

## STUDENT RESIDENCES

- A Ashfield
- B Beechfield
- C Castle Crag
- D Eagle Crag
- E Fairfield
- F Fellbarrow
- G Greenbank North
- H Greenbank South
- I Hazeldene
- J Heathfield
- K Helvellyn
- L Rosthwaite
- M Seathwaite
- N Stybarrow
- O Wansfell
- P Yewbarrow



**Address**  
University of Cumbria  
The Barn, Rydal Road,  
Ambleside,  
Cumbria,  
LA22 9BB

**Telephone**  
01539 430274

## CAMPUS KEY MAP

- Main Reception
- Building Access
- Accessible Entrance
- Car Park
- Designated Disabled Persons Parking Bay
- Bicycle Shed
- Designated Smoking Area
- Loop System
- Maternity Room
- Pay and Display Parking
- Designated Care Share
- Outdoor Classroom