

# **POSTGRADUATE PROSPECTUS**

**2025/26**

**NO.1**

**UNIVERSITY IN THE NORTH  
OF ENGLAND — AND 6TH IN  
THE UK — FOR PRODUCING  
ENTREPRENEURS<sup>1</sup>**

**2ND**



**IN THE NORTH WEST FOR  
QUALITY EDUCATION<sup>2</sup>**

**A SILVER RATED  
UNIVERSITY FOR STUDENT  
OUTCOMES<sup>3</sup>**



**RANKED TOP 41% OF  
UNIVERSITIES WORLDWIDE  
FOR SOCIAL AND  
ECONOMIC IMPACT<sup>4</sup>**

**NO.1**



**UNIVERSITY IN THE NORTHWEST AND IN THE TOP 10 IN THE  
UK FOR GRADUATES INTO EMPLOYMENT OR FURTHER STUDY  
WITHIN 15 MONTHS (97%)<sup>5</sup>**

## CONTENTS



**This is an interactive document.**  
The table of contents and bottom toolbar allow you to navigate through the prospectus.

02  
Welcome from the Vice  
Chancellor

04  
Here for you

06  
Funding your studies

07  
Our Partnerships

08  
Why Cumbria?

10  
Investing in your future

12  
Life at Cumbria

14  
Student life

15  
Your facilities

16  
Explore our campuses

18  
Accommodation

19  
Enhance your research skills

20  
PGR and our research impact

21  
Course Levels

22  
Postgraduate Courses

56  
Continuous Professional  
Development (CPD)

57  
Postgraduate Research (PGR) Degrees

58  
Disclaimer

59  
Contact Information

## WELCOME FROM THE VICE CHANCELLOR

**I AM DELIGHTED THAT YOU ARE CONSIDERING  
A LIFE-CHANGING INVESTMENT INTO YOUR FUTURE.  
AT THE UNIVERSITY OF CUMBRIA, WE ARE FOCUSED ON  
TRANSFORMING LIVES THROUGH LEARNING, APPLIED  
RESEARCH, AND PRACTICE — BOTH FOR CURRENT AND  
FUTURE GENERATIONS.**

We are committed to delivering quality higher education throughout the county of Cumbria and beyond, empowering students with advanced skills and knowledge that can be effectively applied in the workplace.

Our postgraduate teaching is informed by industry insights and research-active academics. We offer flexible modular learning options, allowing you to manage your studies around work, family, or life commitments.

You will gain knowledge and experience in a safe space through critical exploration, and through interaction with our academic institutes, centres, and networks.

With headquarters in the incredible county of Cumbria, we offer rewarding places for student communities to nurture academic learning and passion through practice-based and applied research methods in fantastic locations.

Choosing a postgraduate course opens new and exciting doors, no matter where you choose to start or continue your career. We want to be part of your journey; we encourage you to explore our postgraduate opportunities and discover how you can develop your career further at the University of Cumbria.

I wish you the best of luck with your studies and hope to meet you at your graduation.

**Professor Julie Mennell, PhD**





## HERE FOR YOU

### TRANSFORM YOUR FUTURE

Ready for a thrilling adventure? There's a whole new world to be discovered as a postgraduate student! Whether it's unlocking career opportunities, changing direction or studying something that truly inspires you, we are here to support you. Together, we'll transform your future career and help you get the most out of your postgraduate experience.

At the University of Cumbria, you'll become part of a welcoming, vibrant community of like-minded individuals within a dynamic and collaborative environment.

Our expert academics will teach you in smaller groups, providing tailored guidance while connecting you with industry professionals and real-world opportunities. With a focus on employability, you'll gain the skills, knowledge, and practical experience that employers value—preparing you to take the next step in your career with confidence.

You'll be inspired, stretched, and challenged to achieve your professional goals while benefiting from tools and support for your health, well-being, and personal development. Embarking on postgraduate study is a life-changing investment in yourself and your future.

Ready to take the next step?





## VISIT US IN PERSON

We offer a range of postgraduate Open Days and events, both on campus and online, to help you make an informed decision about what course is right for you. These provide an opportunity to connect with us, explore your options, and get your questions answered.



FIND OUT ABOUT OUR UPCOMING EVENTS

[CLICK HERE](#)

## FUNDING YOUR STUDIES

### Investing in Your Future

Postgraduate study gives you the opportunity to specialise in your field, advance your career, and develop your knowledge to the highest level. It's important to secure your funding ahead of time so you can focus on what matters most – learning.

### Tuition Fees

Postgraduate tuition fees vary depending on the length and intensity of the course. Tuition fees can be found on each course page on our website. Just scan the QR code with your mobile phone camera to find out more. There is also our postgraduate student finance page with information on a range of grants, scholarships, and bursaries to support low-income students, students from partnered organisations, and those who go on to study a PGCE course.

For more information, visit [cumbria.ac.uk/study/student-finance/postgraduate](https://cumbria.ac.uk/study/student-finance/postgraduate).

### Your Living Expenses

Whether you choose to live on campus, in local accommodation or commute from home, the cost of living can vary greatly depending on your needs and personal lifestyle choices. Generally speaking, living expenses in the North West, where most of our campuses are based, tends to be lower than other places in the UK.



### ALUMNI DISCOUNT

**20% OFF FEES ON TAUGHT COURSES OR 10% OFF RESEARCH DEGREES FOR ALUMNI RETURNING TO STUDY AT POSTGRADUATE LEVEL.\***

**FIND OUT MORE**

\*This is for awards of up to a maximum of 180 credits and does not apply to PGCE students.

## OUR PARTNERSHIPS

We collaborate with a wide range of partners to share resources and knowledge that will further enrich your experience.

We believe that close partner collaborations positively impact both our students and the wider region.

We are working with the National Trust on the development and delivery of new courses, shaping the direction of the Northern Powerhouse campaign, and raising the profile of Carlisle to make it a better place to live, work, invest and visit.

## OUR PARTNERS INCLUDE

- Northern Powerhouse
- Cumbria Tourism
- Lancaster & District Chamber of Commerce
- National Trust
- Carlisle Ambassadors
- Britain Energy Coast Business Cluster
- NHS





## WHY CUMBRIA?

Join a dynamic academic community where you can conduct groundbreaking research, make a meaningful impact, and drive global change.

We offer a range of postgraduate options, including full-time and part-time programmes, research degrees, master's qualifications, and diplomas, allowing you to tailor your studies to your ambitions.

## GREAT REASONS TO CHOOSE CUMBRIA

### Industry Recognised Courses

Our courses are designed and delivered by industry experts and many are accredited or approved by academic and industry professional bodies. You can therefore be confident that our courses are highly regarded and will increase your employability.

### Flexible Course Options

Our flexible courses enable you to study at your own pace alongside work and other life commitments. You will gain the critical skills, knowledge and qualifications to succeed and progress in your chosen career.

### Industry Networking

We have strong partnerships with widely known associations, governing bodies and major businesses on a local, national and global scale. Examples include BAE Systems, the BBC, Rolls Royce, and the NHS. These partnerships provide opportunities to build your professional network.

### Impactful Research & Innovation

Built upon 150 years of higher education, our research delivers real positive change on an international scale. We are making a global impact, driving positive change and innovation to help transform people's lives.

Ready to apply? Click below to learn how you can start the application process for your postgraduate course.

[CLICK HERE](#)



## **Taught by World-Class Academics**

Our teaching is guided by practice, industry expertise, and research-informed academics. With real-world experience, strong industry connections, and engagement in pioneering research, our academics are renowned experts in their fields.

## **Personalised Learning Experience**

We have the advantages of a large academic institution, but in more intimate and specialised settings, encouraging confidence and personal growth. Our academics get to know you as an individual and offer personalised guidance.

## **Gain Experience While You Study**

Our courses offer work-integrated learning, such as placements, live-briefs and project based work, providing you with further hands-on experience that will give you an edge in your career.



## INVESTING IN YOUR FUTURE

We are constantly developing our campuses and enhancing the environment in which you learn, study and ultimately achieve.

### RECENT INVESTMENTS INTO NEW, LEADING-EDGE FACILITIES INCLUDE:

- **Research facilities**  
State-of-the-art scientific teaching and research laboratories at our Fusehill Street campus in Carlisle.
- **Sustainable development**  
An environmentally sustainable teaching block at our Lancaster campus.
- **Accommodation modernisation**  
Redevelopment of our Ambleside campus with purpose-built, modern accommodation.

## SHAPING THE FUTURE OF BARROW

Our new University of Cumbria Barrow campus opens in 2025. The first courses to be delivered from the site—Mechanical Engineering, Computer Science and Adult Nursing—have been designed to meet the needs of local employers, with more to come.

Our new campus is a collaborative initiative developed in partnership with BAE Systems, Furness College, Westmorland & Furness Council, Lancaster University, local businesses, and others. The campus is also part of the Barrow Learning Quarter, which is the largest among a series of government-backed Brilliant Barrow projects driving investment in the area's future.

## BAE SYSTEMS

## IN PARTNERSHIP WITH BAE SYSTEMS



**“BARROW-IN-FURNESS HAS AN IMPORTANT ROLE IN THE NATION’S DEFENCE AND ENERGY INFRASTRUCTURE, AND WE WILL WORK WITH PARTNERS INCLUDING BAE SYSTEMS, TO SUPPORT BARROW’S SKILLS, PRODUCTIVITY, AND ECONOMIC LANDSCAPE. WE WILL CREATE OPPORTUNITIES BY PROVIDING INCLUSIVE AND ACCESSIBLE PROGRAMMES OF STUDY AND PROGRESSION ROUTES THROUGH TO HIGHER EDUCATION.”**

Professor Brian Webster-Henderson OBE,  
Deputy Vice Chancellor



## THE PEARS CUMBRIA SCHOOL OF MEDICINE

In partnership with Imperial College London, the University of Cumbria has opened The Pears Cumbria School of Medicine, uniting our expertise in the education of nurses, midwives, and allied health professionals with Imperial's reputation as one of the world's best medical schools. The development and launch of the medical school has been supported by a £5 million donation from Pears Foundation.

Starting in Autumn 2025 will be a four-year medical degree, co-created with regional NHS partners, to train compassionate, adaptable, and innovative doctors who meet the needs of residents in Cumbria and the North West.

Visit [cumbriamed.ac.uk](https://cumbriamed.ac.uk) for more information.

## CARLISLE CITADELS CAMPUS

Our latest transformational project will see the construction of a new flagship campus within the city of Carlisle. Located at the heart of the city centre, the Citadels campus will boost the vibrancy and vitality of Carlisle and the wider region, offering accessible, flexible teaching and academic facilities that are digitally advanced.

The development will include state-of-the-art teaching and group study areas, as well as library and social spaces.

### The Pears Cumbria School of Medicine

A partnership between

Imperial College  
London



## LIFE AT CUMBRIA

### Careers & Development

We know how important your career is to you. That's why we are committed to boosting your job prospects and ensuring that your postgraduate journey is as smooth as possible.

At every campus, we offer a range of support services, including: careers and employability events, workshops, drop-ins and advice on career management, skills development, and how to find work opportunities.

You can access our services via our careers hub *My Career Enriched*, the Student Enquiry Point, or via phone and email.

If you are an aspiring entrepreneur looking to chase your dream whilst studying, our Careers and Employability Service can help. From start-up advice and funding opportunities to marketing strategies and pricing considerations, we provide expert guidance at every stage. Whether launching a new venture or expanding an existing one, we offer the resources and support to help you achieve your business and career goals.

### Student Services

#### **Finance**

Our confidential advisory service is free for applicants and students.

With expert advisers across the university, we can provide help and information on a wide range of issues, such as funding eligibility and student loans. If you need any support in managing your money whilst you're studying, we can also help you to plan your finances.

#### **Disability**

We recognise that every student has a unique learning style, and we are committed to fostering a supportive environment where everyone can flourish.

We actively encourage applications from disabled students and provide tailored support to ensure you can excel in your studies. This includes individualised Specific Learning Difficulty (SpLD) action plans and a range of services designed to help students with disabilities or specific learning difficulties succeed in their chosen course.

#### **Health & Wellbeing**

We all go through times where we need a helping hand or someone to listen to our problems. Personal, emotional, and psychological issues can impact your ability to study.

Your wellbeing is very important to us, which is why our Mental Health and Wellbeing team are on hand to help and support you.







## STUDENT LIFE

### OUR COMMUNITY

Choosing to undertake a postgraduate course can feel like a big step, especially if it's been some time since you last studied. At the University of Cumbria, we know that having a supportive and welcoming community matters, whether you're on campus or learning remotely. We are excited for you to be part of our wonderful community while we guide you on your path to success.

Whatever your interests, you'll find a group, society or network to immerse yourself in and meet like-minded people.



#### Supporting Local Communities

We are dedicated to helping our local communities thrive. Through hosting charity fundraisers, supporting local festivals, and running our Young Care Leavers programme, we continuously foster the development of the communities to which we belong.

Our communities, which are surrounded by inspiring and innovative businesses, offer valuable opportunities for you to get involved.

#### Equality, Diversity & Inclusion

At the University of Cumbria, we believe that every individual deserves equal opportunities. We celebrate diversity in all its forms and strive to create inclusive environments where every student can thrive and achieve their ambitions.

From ensuring diverse and representative reading lists, to participating in community events such as Pride, and providing free training on a wide range of equality topics, we are committed to continuously reviewing and improving the spaces where our students live, learn, and work.

#### University of Cumbria Students' Union

Once you become a student at the University of Cumbria, you become a member of our vibrant and active University of Cumbria Students' Union (UCSU).

Led by students for students, the UCSU's mission is to represent and support you in every way possible.

Whether you need study advice, are looking to meet new people, or want to get involved and make a difference to the university, the UCSU is here for you. Visit: [ucsu.me](https://ucsu.me) to find out more.

#### Groups & Societies

Continue a hobby you love or explore a new interest. Our wide range of student-led societies and groups range from mountaineering to badminton to midwifery.

#### Events

From workshops to training courses to volunteering fairs, we aim to provide events and opportunities that all students can enjoy.



## YOUR FACILITIES

### Your Library

Supporting your learning with access to thousands of books, journals, and electronic resource collections, our libraries provide a complete range of services and support to enhance your academic and study skills.

Our campus libraries are friendly, welcoming, and safe spaces for you to use and enjoy. Our supportive Skills@Cumbria team offers appointments, workshops, webinars, online resources, and videos on a wide range of topics, including referencing, searching skills, academic writing, and more.

### Flexible Study Spaces

All our campuses have designated study spaces that offer comfortable and productive environments to suit your learning and research needs.

Where possible, this includes social spaces for collaborative work with others, as well as bookable study rooms and silent zones for when you need a distraction-free environment. Plus, we have many great spots around campus that provide perfect places to relax whilst studying or taking a break.

### UoC Active Sports & Fitness

UoC Active is here to help you maintain an active lifestyle. We offer a range of facilities and services including:

- Affordable memberships for university campus and local partner facilities.
- Free activities and events.
- A range of exercise classes.
- Discounted sports hall hire.
- Health & fitness award courses.
- Expert advice and guidance.



## EXPLORE OUR CAMPUSES

### CARLISLE

Our Fusehill Street Campus champions its roots in health and science. The specialist facilities (including an immersive simulation suite, outdoor teaching classroom and mock hospital ward) are helping to train the healthcare professionals, teachers and scientists of tomorrow.

The Brampton Road Campus serves as Cumbria's hub of the arts, where like-minded creative students come together to turn their passions into careers. With its modern workshops, studios and design labs, you'll have all the tools you need to explore your artistic voice.

### LANCASTER

Our Lancaster Campus, close to the city centre, combines innovation and culture. Filled with advanced practical facilities, including sport performance labs, an X-ray and ultrasound suite, training wards, ambulance simulators, and immersive

teacher training rooms, you'll develop the skills and experience needed to take you to the very top. There are spaces to catch up with friends and stay active, too – grab a bite to eat at The View café or take a yoga, Pilates or cardio class at the Sports Complex.





## AMBLESIDE

As one of the only UK university campuses located in a national park and UNESCO World Heritage Site, our Ambleside Campus is a truly unique place to study.

While you'll spend lots of time outdoors in the Lake District National Park, you'll also have access to a range of specialist facilities on-site, including science labs, a bouldering wall, an equipment hire department, and our very own nature reserve.



## LONDON

Our roots may be in Cumbria, but our ambition stretches across the UK. Located just steps away from the iconic Canary Wharf, our East London Campus is the home of opportunity for entrepreneurial leaders, inspiring teachers and world changers.

With its own library, cafeteria, and dedicated study spaces, it has everything you need to thrive in your studies and beyond.

## ACCOMMODATION

For many postgraduate students, living in halls is still an option depending on your work/home life environment. If you are thinking of living away from home, our halls provide a safe environment for you to live, study, and socialise.

We have a range of campus accommodation to cater for all budgets, offering excellent value for money across a range of room type options, so we're sure you'll find your home-from-home at Cumbria.

Imagine waking up to the smell of coffee brewing and the sound of flatmates chatting. Leave the comfort of your warm, cosy bed and open your curtains to a view of one of our green campuses and historic cities, or the stunning London city skyline, or maybe the rolling Lake District hills. Whichever location you choose, this can be your home and part of your next chapter.

- AFFORDABLE LIVING

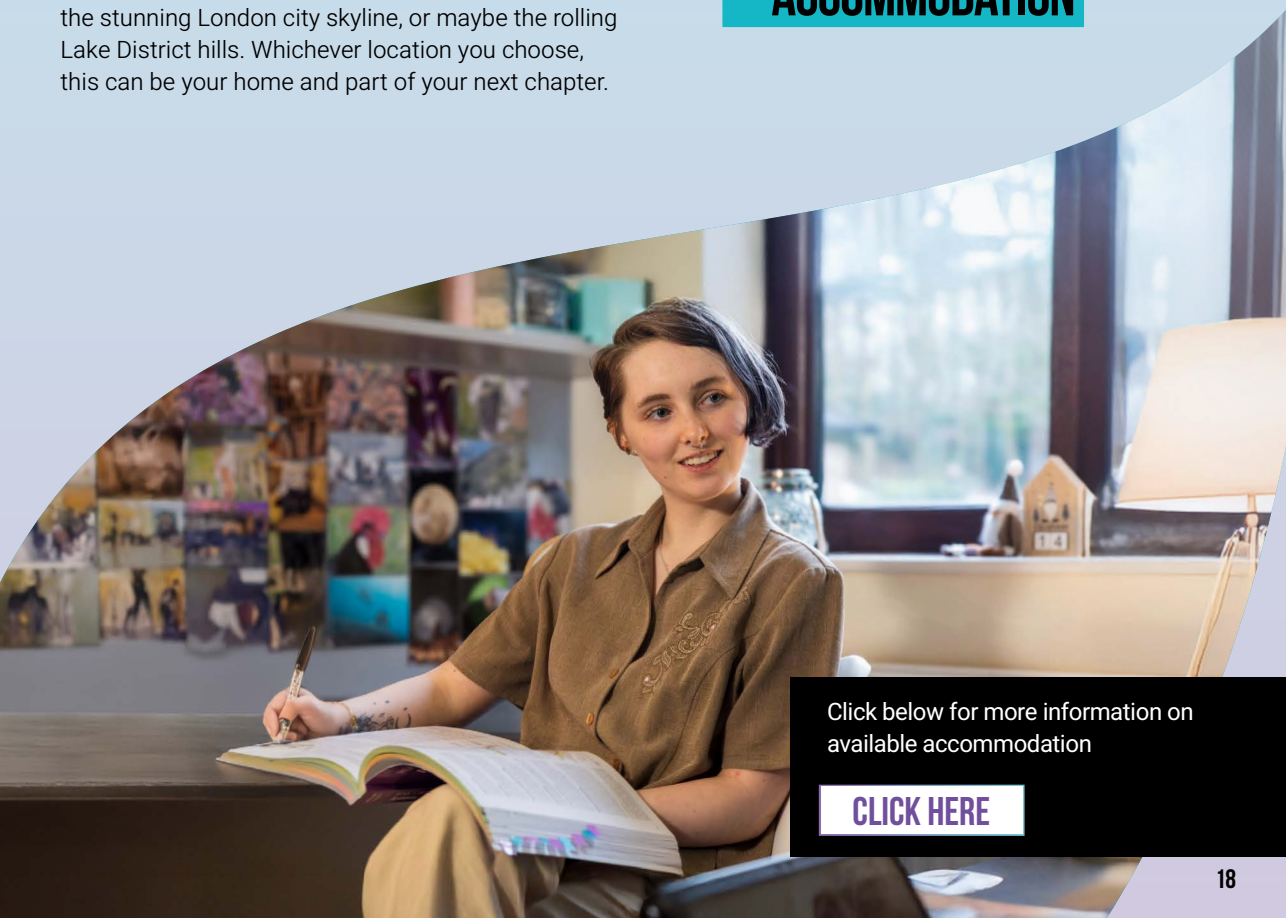
- ENSUITE

- SHARED FACILITIES

- GREAT LOCATIONS

- CLOSE TO CAMPUS

- SAFE AND GOOD QUALITY  
ACCOMMODATION



Click below for more information on  
available accommodation

[CLICK HERE](#)



## ENHANCE YOUR RESEARCH SKILLS

Our specialist areas range from health, science and environment to business, leadership and education, with a variety of flexible, multidisciplinary courses to choose from. Each department is home to expert research academics who not only have a wealth of professional experience but are committed to helping you achieve your dream career.

Develop your knowledge and advance your specialist research skills where 42% of our research was classified as 'world leading' or 'internationally excellent' in the last Research Excellence Framework (REF), 2021.



## PGR AND OUR RESEARCH IMPACT

Since the University of Cumbria was established in 2007, our research has been continuously delivering real-world benefits to local, national, and international communities, practitioners, and industries. Built upon 150 years of higher education, our reputation for research excellence and innovation is ever-growing. 42% of our submission to the Research Excellence Framework 2021 was rated 'internationally excellent' or better, and 54% of our research impact was also rated 'internationally excellent'.

Through our range of research-informed courses, we aim to enhance our students' education by providing the opportunity to participate in research that positively impacts the wider world. Our expert academics are leading researchers who are committed to providing excellent support and supervision that enables students to make a valuable contribution in their field.

- **Research Spotlight at Cumbria**

Research Spotlight at Cumbria is the our newest podcast series profiling our researchers and their impact driven work; making a difference in mental health, fine art teaching practice, ecology and conservation, and community life

Click below to get a taste of our exciting research.

**CLICK HERE**

- **Our Research**

### **Health & Wellbeing**

Research in the Institute of Health contributes to the positive transformation of health and social outcomes, driving excellence in research, evaluation, scholarship, and practice.

### **Creative Practice**

The Arts Research Initiative explores a range of creative disciplines and topics such as environmental issues, mythologies, and political landscapes.

### **Environment and Geography**

Led by the Centre of National Parks and Protected Areas (CNPPA), our research addresses complex local and global challenges and enables us to develop innovative practices that enhance landscapes and communities.

### **Business, Leadership & Visitor Economy**

Our work in the Institute for Business, Industry and Leadership focuses on regional development, sustainable leadership, project management, and tourism.

### **Education & Outdoor Learning**

The Learning, Education and Development Research Centre (LED) supports practitioners in publishing high quality research that influences policy and professional development.



## COURSE LEVELS

Our postgraduate level courses can be divided into four main groups as shown below.

### POSTGRADUATE DIPLOMA & CERTIFICATE

Diplomas and Certificates are Level 7 qualifications that are valued at two-thirds or one-third of a traditional master's, respectively, and take less time to complete. Some courses may provide the option to top up Diplomas and Certificates to a master's level qualification at a later date.

### PGCE

Equivalent to 60 credits of a master's degree and typically lasting one year, a Postgraduate Certificate in Education (PGCE) prepares you to teach your subject in a classroom.

### TAUGHT MASTER'S DEGREES

As a complete Level 7 qualification, studying a master's degree provides the opportunity to further explore an area of interest or take the next step towards a doctorate. This will give you the skills and knowledge to increase employability.

### POSTGRADUATE RESEARCH (PGR) DEGREES

Our MRES, DBA, and PhD programmes offer you the opportunity to make a significant contribution to your field and collaborate with others to conduct and publish a piece of research.

# POSTGRADUATE COURSES



**TO LEARN MORE ABOUT EACH COURSE, CLICK ON THE COURSE  
TITLE OR THE 'FIND OUT MORE' BUTTON TO VISIT OUR WEBSITE**



**This is an interactive document.**  
The table of contents and bottom toolbar allow you to navigate through the prospectus.

- |  |   |
|--|---|
| 24 <b>MA</b> Education   | 44 <b>MSc</b> Pre-Registration Nursing/<br>Registered Nurse: Adult<br>Nursing         |
| 25 <b>MA</b> Education Leadership  |   |
| 26 <b>PGCert</b> Learning and Teaching<br>in Professional and Higher<br>Education  | 45 <b>MSc</b> Pre-Registration Nursing/<br>Registered Nurse: Mental Health<br>Nursing |
| 28 <b>PGCE</b> Postgraduate Certificate<br>in Education                            | 46 <b>MSc</b> Occupational Therapy<br>(Pre-Registration)                              |
| 30 <b>MA</b> Creative Practice   | 47 <b>MSc</b> Physiotherapy<br>(Pre-Registration)                                     |
| 32 <b>MA</b> Literature, Romanticism,<br>and the English Lake District             | 48 <b>MSc</b> Psychology: Environment,<br>Health and Wellbeing                        |
| 34 <b>MA</b> Outdoor & Experiential<br>Learning                                    | 49 <b>MSc</b> Psychology: Legal and<br>Criminological                                 |
| 36 <b>MSc</b> Conservation<br>Management   | 50 <b>MSc</b> Sport and Exercise<br>Rehabilitation                                    |
| 38 <b>MSc</b> Forest Science   | 51 <b>MBA</b> Business Administration   |
| 40 <b>MA/PGDip</b> Counselling &<br>Psychotherapy                                  | 52 <b>MSc</b> International Management  |
| 41 <b>MSc</b> Medical Imaging<br>(Ultrasound)                                      | 53 <b>MSc</b> Project Leadership  |
| 42 <b>MSc/PGCert/PGDip</b> Medical<br>Imaging: Magnetic Resonance<br>Imaging (MRI) | 54 <b>DBA</b> Doctor of Business<br>Administration                                    |
| 43 <b>MSc</b> Midwifery<br>(Pre-Registration)                                      |   |



## EDUCATION MA



This dynamic course offers an opportunity to expand your professional knowledge and enhance your career prospects across a range of education roles. Through a global lens, you will deepen your understanding and expertise, considering cultural fluency and the importance of social change in today's employment market. Employer-led events, career guidance, and introductions to organisations offering optional voluntary practical experience will further enrich your learning experience.

You will develop your professional profile and gain the skills to identify and accelerate career progression opportunities.

### COURSE OVERVIEW

Our full-time MA Education is designed to help you achieve mastery in your field. Offering a choice of specialist themes, this course supports the development of your educational knowledge, skills, and interests for specific career paths in teaching, leadership, governance, and consultancy.

Drawing on current international research within a dynamic academic community, the course also provides supported opportunities to submit work for publication.

### ON THIS COURSE, YOU WILL...

- Join our established education department to complete a one-year Masters level qualification recognised globally.
- Be guided by expert tutors specialising in achievement, motivation, and overcoming disadvantage in diverse educational contexts.
- Belong to an academic community known for excellence, with a 100% previous successful completion rate for full-time study.
- Benefit from career progression and graduate outcomes that open doors to exciting employment opportunities.

### ENTRY REQUIREMENTS

- Minimum Lower Second Class (2:2) Honours degree or equivalent.
- If English is not your first language, please read our English Language requirements at [cumbria.ac.uk/study/international-students/entry-requirements/](https://cumbria.ac.uk/study/international-students/entry-requirements/).

**Location:** Lancaster  
**Recruiting to:** UK/RoI/Settled in UK/EU/EEA/International

**Course duration:** Full-time: 1 Year  
**Start date:** September

**Award:** MA  
**Delivery style:** In person

**FIND OUT MORE**

## EDUCATION LEADERSHIP

MA



Our MA Education Leadership offers an excellent opportunity to gain a Master's-level qualification in just one year, preparing you for leadership roles in both local and international educational contexts.

Designed to build on your existing educational experience, this full-time, face-to-face course immerses you in a focused and dynamic academic community on campus.

### COURSE OVERVIEW

This course draws on current international research, offering a broad perspective on education leadership in the UK and globally. You will explore the theoretical foundations of leadership, enhancing your practice and understanding of its role as a catalyst for social change.

At the dissertation stage, you will have the flexibility to tailor your research to align with your interests and career aspirations. Through successfully completing modules designed to support your professional journey, you will engage with leadership, governance, teaching, and management from multiple professional perspectives.

### ON THIS COURSE, YOU WILL...

- Complete a one-year masters leadership qualification, recognised worldwide.
- Be guided by expert tutors with extensive professional and academic experience in education leadership.
- Join an academic community with a reputation for excellence and a 100% graduate employment rate.
- Belong to an established, world-class education department.

### ENTRY REQUIREMENTS

- Minimum Lower Second Class (2:2) Honours degree or equivalent.
- If English is not your first language, please read our English Language requirements at [cumbria.ac.uk/study/international-students/entry-requirements/](https://cumbria.ac.uk/study/international-students/entry-requirements/).

**Location:** Lancaster  
**Recruiting to:** UK/RoI/Settled in UK/EU/EEA/International

**Course duration:** Full-time: 1 Year  
**Start date:** September

**Award:** MA  
**Delivery style:** In person

**FIND OUT MORE**

## LEARNING AND TEACHING IN PROFESSIONAL AND HIGHER EDUCATION

PGCERT

**This fully online course equips you with essential skills in research-informed teaching, curriculum design, and reflective practice—perfect for busy professionals working with adult learners.**

**Guided by experienced educators, you will study at your own pace while building the confidence and expertise to excel in a variety of educational settings, including healthcare, higher and further education, and the voluntary sector. To support your independent learning, the course includes a range of live online sessions designed to help consolidate your studies.**

**Whether you're looking to advance in your current role or broaden your career opportunities, this course provides practical tools to support your career progression and enrich your teaching approach.**

### COURSE OVERVIEW

This course will develop your ability to be a critically reflective practitioner, equipping you with the academic knowledge, skills, and confidence needed to thrive as an educator. The course comprises three 20-credit modules focused on engaging with research-informed teaching and learning approaches, exploring curriculum design and development, and learning how to research your own practice.

Designed for distance learning, all activities and assessments are authentic and relevant to your professional context. This course is also an excellent option for those currently working or volunteering with adult learners and seeking career progression.

### ON THIS COURSE, YOU WILL...

- Enjoy the flexibility of a fully online course delivery.
- Advance your career in education with a practical, research-based approach.
- Receive expert guidance from academics specialising in professional and higher education.
- Engage with a diverse learning community of professionals working across adult education settings.
- Place research-informed teaching at the heart of your current and future practice.

### ENTRY REQUIREMENTS

- Minimum Lower Second Class (2:2) Honours degree or equivalent.
- If English is not your first language, please read our English Language requirements at [cumbria.ac.uk/study/international-students/entry-requirements/](https://www.cumbria.ac.uk/study/international-students/entry-requirements/).

**Location:** Online

**Recruiting to:** UK/Rol/Settled in  
UK/EU/EEA/International

**Course duration:** Part-time: 1 year

**Start date:** January

**Award:** PGCert

**Delivery style:** Online

**FIND OUT MORE**





## PGCE

### POSTGRADUATE CERTIFICATE IN EDUCATION



Whether you're starting your teacher training or advancing your career in education, our PGCE courses provide the skills, confidence, and accreditation to help you succeed. With expert-led training, strong school partnerships, and flexible study options, you'll be well-prepared for a rewarding career.

For those seeking Qualified Teacher Status (QTS), our courses provide school-based placements, ensuring you graduate classroom-ready. Our non-QTS pathway also offers alternative routes into education settings and supports career progression.

If you want to stand out even further, there is also the option to study a specialised SEND/Inclusion pathway within our PGCE General Primary with QTS (5-11 years). This will equip you with the highly sought after skills and expertise schools require to support diverse learning needs in the classroom.



## WHAT IS QUALIFIED TEACHER STATUS (QTS)?

Qualified Teacher Status, also referred to as QTS, is a legal requirement for teaching in many schools across England and Northern Ireland and is widely regarded as a valuable qualification for teachers in most English schools.

### PGCE COURSES WITH QTS\*

**General Primary with QTS (5-11 years)** – Specialisms in: Mathematics, PE, Environmental & Outdoor Learning, Inclusion/SEND.

**Primary Education with QTS (Lower Primary 3-7 years)**

**Secondary with QTS** – Specialisms include: Physics, Biology, Chemistry, Mathematics, English, Geography, History, Religious Education, Modern Foreign Languages, Art & Design, Music, Computer Science & ICT, Physical Education.

Accreditation for the award of QTS is through the University of Warwick.\*

### PGCE COURSES WITHOUT QTS\*

Our **PGCE (non-QTS) online** programme is delivered as a distance learning provision. It is a part-time programme which can be taken flexibly, on its own, or alongside part-time employment. The course is ideal for individuals who already work in an educational setting and are looking to progress in their career.

**Location:** Carlisle, Lancaster, London. Some courses may not run at all locations. Check our website for up-to-date information.

**Course duration:** PGCE with QTS, full time: 1 year; PGCE non-QTS, part time: 1 year.

**Award:** PGCE



## IS IT CAMPUS-BASED OR SCHOOL-BASED?

We offer both campus-based and school-based PGCE courses, each leading to the same qualification but catering to different learning preferences.

In the campus-based programme, you'll learn on one of our university campuses, with two-thirds of your time spent in schools for practical placements.

In the school-based programme, your training takes place on-site at a partner school, supported by both experienced teachers and University of Cumbria tutors, ensuring you're guided to success from day one.

Please note that some school-based programmes require occasional attendance at campus sessions. Scan the QR code for more details.

## WHY CHOOSE CUMBRIA FOR YOUR PGCE?

- Learn from expert tutors with extensive experience in education.
- Gain hands-on experience through strong school partnerships and real-world teaching placements.
- Customise your studies to align with your professional context and interests.
- Benefit from personalised support and tailored mentoring throughout your journey.
- Stand out by studying our specialised SEND/ Inclusion primary pathway to develop expertise in supporting diverse learning needs.

## ENTRY REQUIREMENTS

- Minimum Second Class Honours degree (for Secondary courses your undergraduate degree will need to be in a related subject to your chosen specialism).
- GCSE at grade 4/C in English Language or Literature and Mathematics.
- For the PGCE non-QTS programme, applicants must currently be working in, or have access to, an educational setting for the duration of the course.
- If English is not your first language, please read our English Language requirements at [cumbria.ac.uk/study/international-students/entry-requirements/](https://cumbria.ac.uk/study/international-students/entry-requirements/).



\*Accreditation may revert to the University of Cumbria for students commencing course from September 2025 onwards.

**Recruiting to:** UK/Rol/Settled in UK/  
EU/EEA/International

**Start date:** January, April, September.  
Start date will vary depending on your training provider. Check our website for up-to-date information.

**FIND OUT MORE**



## **CREATIVE PRACTICE**

MA

Whether you're progressing from undergraduate studies or an established professional looking to diversify your practice, our MA Creative Practice will help you develop and extend your creative portfolio while advancing your career aspirations.

A defining feature of this course is its multidisciplinary approach, providing a dynamic learning environment that fosters creative exchange and collaboration.

**"I FOUND IT INCREDIBLY VALUABLE WHEN TUTORS ENCOURAGED US TO DISCUSS OUR PROJECTS IN CLASS, AS WE ALL HAD THE OPPORTUNITY TO BE CHALLENGED AND IMPROVED BY PRACTITIONERS FROM DIFFERENT CREATIVE BACKGROUNDS TO OUR OWN."**

– Michelle Lam

### **COURSE OVERVIEW**

You will draft, initiate, and project-manage your own creative briefs, guided by expert tutors. Whether you choose to specialise in a single medium or work across multiple disciplines, you will have the flexibility to shape your own creative journey—individually or collaboratively.

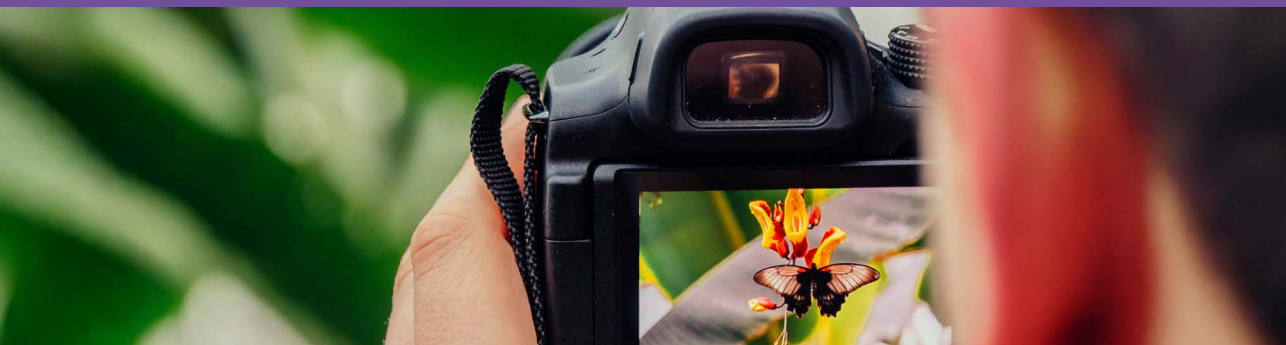
With access to industry-standard facilities and support from experienced technicians, this course provides the practical, technical, and applied knowledge to develop the adaptable skills needed to thrive in today's evolving cultural landscape. Your studies will culminate in a major MA project and a professional presentation in the final Master's exhibition.



**Location:** Carlisle – Brampton Road

**Course duration:** Full-time: 1 Year

**Award:** MA



## ON THIS COURSE, YOU WILL...

- Work in industry-standard studio spaces, including Mac and PC suites equipped with the latest high-specification design and video production software and hardware.
- Showcase your work in professional settings, including the final MA exhibition show.
- Access expert technical support and cutting-edge facilities, including the printmaking studio, 3D workshop, photography darkrooms, editing suites, motion capture technology, and a fully equipped production studio with a full lighting rig and multi-camera set-up.

- Benefit from built-in professional development, with tutors offering strong industry links to help you build a valuable professional network.
- Learn from accomplished academic practitioners, who have published and exhibited nationally and internationally and are engaged in practice-led research.

## ENTRY REQUIREMENTS

- Minimum Upper Second Class Honours (2:1) degree, or equivalent, in a related subject.
- If English is not your first language, please read our English Language requirements at [cumbria.ac.uk/study/international-students/entry-requirements/](https://cumbria.ac.uk/study/international-students/entry-requirements/).



**Recruiting to:** UK/Rol/Settled in UK/  
EU/EEA/International

**Start date:** September  
**Delivery style:** In person

**FIND OUT MORE**

## LITERATURE, ROMANTICISM, AND THE ENGLISH LAKE DISTRICT MA

This unique course offers the opportunity to explore a rich collection of literary and non-literary texts within the very geographical landscape that inspired them.

Located in the heart of the Lake District National Park, a UNESCO World Heritage Site, our Ambleside campus provides an exceptional setting to immerse yourself in the literature of Romanticism—surrounded by the very scenery that influenced generations of poets and writers.

### COURSE OVERVIEW

You will explore critical ideas about the relationship between the creative imagination and place, and have the opportunity to visit some of the specific locations that have inspired and continue to inspire writers. This course also offers exclusive opportunities to engage with partner organisations such as Brantwood and the Wordsworth Trust, as well as to work with unique manuscript resources.

Exploring themes such as literary tourism, environmental issues, and cultural heritage, this MA enhances career prospects in publishing, the creative industries, and cultural heritage sectors. It also serves as excellent preparation for further research at MPhil/PhD level.

**“I HAVE A DREAM JOB AND I’M ONLY HERE BECAUSE MY LECTURER NOT ONLY INTRODUCED ME TO THE ROMANTICS BUT WAS A SIGNIFICANT INFLUENCE WHEN IT CAME TO APPLYING TO BE A CURATOR. SAYING SHE IS INSPIRING IS AN UNDERSTATEMENT!”**

– Leo Finighan



**Location:** Ambleside

**Course duration:** Full-time: 1 Year

**Award:** MA





## ON THIS COURSE, YOU WILL...

- Study within the stunning scenery of the English Lake District, which has inspired many of the UK's greatest writers.
- Take part in field trips to explore how the Lakes have influenced literature.
- Be involved in Cumbria's thriving literary scene and collaborate with local cultural heritage organisations.
- Benefit from close-knit seminar groups, ensuring personalised academic support and development.
- Be taught by literary experts and published academics, with opportunities to develop real-world projects linked to the contemporary cultural heritage industry.

## ENTRY REQUIREMENTS

- Minimum Upper Second Class (2:1) Honours degree, or equivalent, in English Literature or a related subject.
- If English is not your first language, please read our English Language requirements at [cumbria.ac.uk/study/international-students/entry-requirements/](https://cumbria.ac.uk/study/international-students/entry-requirements/).



**Recruiting to:** UK/RoI/Settled in UK/  
EU/EEA/International

**Start date:** September  
**Delivery style:** In person

**FIND OUT MORE**

## OUTDOOR & EXPERIENTIAL LEARNING MA

Taught by internationally recognised experts in outdoor environmental sustainability education, mental health, wellbeing, and bushcraft, this course is designed for those who want to challenge conventions, think critically, and transform outdoor learning.

### COURSE OVERVIEW

This MA goes beyond theory—it's about fully immersing yourself in experience. Through hands-on engagement in diverse environments, combined with critical reflection on cultural, ecological, and political perspectives, you will be immersed in a learning journey as dynamic as the landscapes you explore.

#### Pathway Options:

- **Outdoor & Experiential Learning** – The core pathway, designed for those passionate about outdoor education and innovative learning.
- **Outdoor & Experiential Learning (Bushcraft)** – Develop traditional skills and explore the deep connections between humans and nature.
- **Outdoor & Experiential Learning (Health & Wellbeing)** – Investigate nature's role in mental health, therapeutic landscapes, and personal development.

### ON THIS COURSE, YOU WILL...

- Challenge conventional ideas about experiential learning and your own perspectives.
- Explore new possibilities for your personal and professional growth, drawing from multiple disciplines and cultures.
- Gain first-hand experience in diverse environments, engaging with a wide range of topics.
- Learn from an internationally renowned faculty, with expertise across all pathway areas and a passion for creative and innovative teaching.

### ENTRY REQUIREMENTS

- Minimum Second Class Honours degree or equivalent.
- If English is not your first language, please read our English Language requirements at [cumbria.ac.uk/study/international-students/entry-requirements/](https://cumbria.ac.uk/study/international-students/entry-requirements/).

**“UNQUESTIONABLY I LOVED EVERY MINUTE OF IT AND CANNOT RECOMMEND THE COURSE HIGHLY ENOUGH. UNDENIABLY IT HAS HAD A POSITIVE IMPACT ON MY CAREER AND CONTINUES TO DO SO.”**

– Jen Ager

**Location:** Ambleside  
**Recruiting to:** UK/Rol/Settled in  
UK/EU/EEA/International

**Course duration:** Full-time: 1 Year  
**Start date:** September

**Award:** MA  
**Delivery style:** In person

**FIND OUT MORE**





## **CONSERVATION MANAGEMENT** MSC

Our planet is currently experiencing multiple unsustainable, anthropogenic demands that are causing extreme pressures on global processes and resources, and are negatively impacting our ecosystems. Biodiversity is declining faster now than at any time in human history.

This course has been designed to meet the growing demand for professional conservation scientists who can address critical global challenges, including climate change and biodiversity loss.

### **COURSE OVERVIEW**

You will work closely with conservation employers in the region, using state-of-the-art approaches. This includes cutting-edge digital technologies, such as remote biodiversity monitoring methods, to address real-world environmental issues.

Through applied conservation research and ecological management training, you will develop the skills and expertise required for careers in conservation, academia, government, NGOs, and the private sector.

**Location:** Ambleside

**Course duration:** Full-time: 1 Year

**Award:** MSc





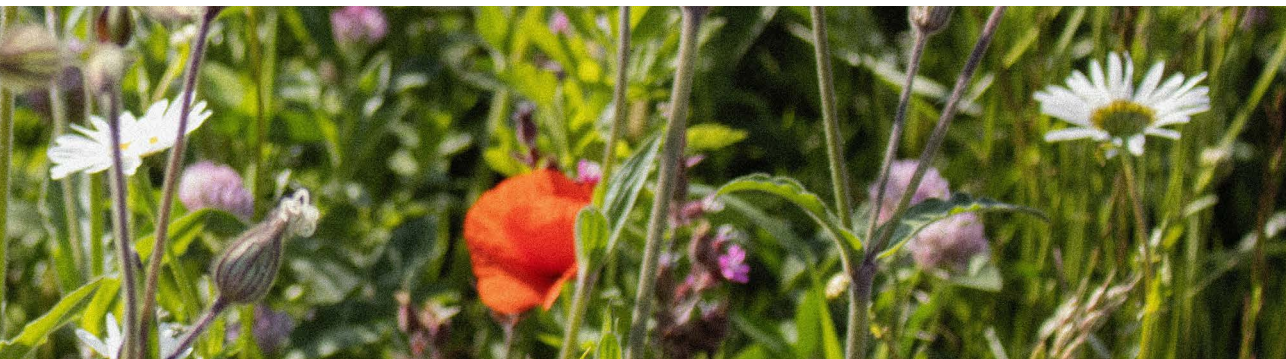
## ON THIS COURSE, YOU WILL...

- Study in the unique setting of the Lake District National Park, working closely with the park and other local conservation partners.
- Develop real-world conservation skills in a different environmental and socio-cultural context during an international field trip.
- Master cutting-edge practical and analytical techniques that will prepare you for a successful career in conservation science.
- Critically evaluate evidence and case studies from diverse ecological and social perspectives, equipping you with an adaptive mindset for effective conservation planning, implementation, and management.

- Benefit from a personalised learning experience with expert tutors who will guide and mentor you throughout your studies.
- Explore your specific interests in areas such as conservation governance, landscape ecology, and natural resource management.

## ENTRY REQUIREMENTS

- Minimum Second Class Honours degree or equivalent.
- If English is not your first language, please read our English Language requirements at [cumbria.ac.uk/study/international-students/entry-requirements/](https://cumbria.ac.uk/study/international-students/entry-requirements/).



**Recruiting to:** UK/Rol/Settled in UK/  
EU/EEA/International

**Start date:** September  
**Delivery style:** In person

**FIND OUT MORE**



## **FOREST SCIENCE** MSC

Based in the heart of the Lake District, with direct access to temperate rainforest, landmark woodland habitat restoration and modern silviculture, this new course tackles the complexities of globalised forestry and the increasing demand for timber amidst the competing pressures of biodiversity loss, climate change, and deforestation.

You will receive a solid scientific foundation that integrates the latest research into forestry, combining a modern perspective with cutting-edge technology to prepare you for success in the dynamic forestry sector.

### **COURSE OVERVIEW**

You will study forestry from the local to global scale, to understand how forest ecosystems are responding to environmental and land-use change, with special consideration for deforestation, biodiversity loss, and countermeasures against the impacts of pests and diseases on forest health.

You will investigate the impact of global climate change on forest ecosystems and become confident with the tools and technologies available to improve the forestry sector and bring a modern perspective to forestry practice. The course combines research and practical application, covering areas such as tree improvement, forest ecosystem management, forest climate resilience, and landscape-level processes.



**Location:** Ambleside

**Course duration:** Full-time: 1 Year

**Award:** MSc



## ON THIS COURSE, YOU WILL...

- Gain expertise in modern forestry practice driven by the latest technological advancements and data-driven insights, preparing you to become a leader in sustainable forest management.
- Benefit from long-standing industry connections between the National School of Forestry and leading employers in the sector, providing you with unique networking and career development opportunities.
- Receive a personalised learning experience, with expert tutors who will guide and mentor you throughout your studies.
- Explore your specific interests in areas such as sustainable forest management, ecology, conservation, and tree biology.
- Participate in hands-on research in our ancient seminatural oak woodland and join a study tour to visit forestry enterprises and research sites, broadening your understanding of forest science.

## ENTRY REQUIREMENTS

- Minimum Second Class Honours degree or equivalent.
- If English is not your first language, please read our English Language requirements at [cumbria.ac.uk/study/international-students/entry-requirements/](https://cumbria.ac.uk/study/international-students/entry-requirements/).



**Recruiting to:** UK/RoI/Settled in UK/  
EU/EEA/International

**Start date:** September  
**Delivery style:** In person

**FIND OUT MORE**

## COUNSELLING & PSYCHOTHERAPY

MA/PGDIP



If the human psyche intrigues you, becoming a counsellor or psychotherapist could be the perfect career path. This British Association for Counselling and Psychotherapy (BACP) accredited course combines your compassionate nature with the academic knowledge and practical skills needed to help people explore their difficulties, express their feelings, and work towards deeper self-awareness and understanding.

### COURSE OVERVIEW

You will consider theories about psychological health and distress, with the opportunity to work with clients presenting with a wide range of different experiences.

Throughout the course, you will train to develop the emotional and psychological resilience essential for a successful career in counselling and psychotherapy. You will become an ethically competent and reflective practitioner who can facilitate your clients' positive life changes by offering a highly professional approach to therapy.

### ON THIS COURSE, YOU WILL...

- Explore and apply counselling and psychotherapeutic literature to contemporary issues, contexts and experiences with a specific focus on the person-centred modality.

- Receive high-quality support and guidance from a lecturing team actively engaged in research and practice.
- Learn valuable transferrable skills in postgraduate research.
- Complete 100 supervised counselling practice hours and undertake your own personal therapy to aid professional development.
- Be eligible to apply for membership to the British Association for Counselling and Psychotherapy (BACP), and may also apply for registration, subject to passing the BACP Certificate of Proficiency upon graduating.

### ENTRY REQUIREMENTS

- Minimum Lower Second Class (2:2) Honours degree or equivalent in a related subject.
- Minimum of 30 hours' counselling skills training (you could consider our Introduction to Counselling Skills module).



British Association for  
**Counselling & Psychotherapy**

**Location:** Lancaster  
**Recruiting to:** UK/RoI/Settled in  
UK/EU/EEA

**Course duration:** Part-time: 3 Years  
(MA), 2 Years (PGDip)  
**Start date:** September

**Award:** MA/PGDip  
**Delivery style:** In person

**FIND OUT MORE**



## **MEDICAL IMAGING (ULTRASOUND)** MSc



Whether you're an existing healthcare professional or new to the field, this accredited Consortium for the Accreditation of Sonographic Education (CASE) two-year MSc is the ideal accelerated pathway to begin your career as a sonographer.

### **COURSE OVERVIEW**

You will acquire the academic knowledge and clinical skills necessary to work as a sonographer, with hands-on training in our on-campus facilities. These include modern ultrasound scanners and state-of-the-art simulators, all designed to prepare you for clinical placement.

This course offers exposure to a wide variety of clinical areas in sonography, including obstetrics, gynaecology, general medical (abdominal and small parts), vascular, breast, and musculoskeletal ultrasound.

### **ON THIS COURSE, YOU WILL...**

- Gain the academic knowledge and clinical skills required to work confidently and competently in medical ultrasound, preparing you to become a skilled practitioner.
- Work with a placement hospital to gain exposure to a range of sonography specialisms, such as obstetrics, gynaecology, general medical, and vascular.
- Engage in practical training to develop essential work-based skills and have access to our cutting-edge ultrasound training hub.

### **ENTRY REQUIREMENTS**

- Minimum Lower Second Class (2:2) Honours degree or equivalent in a related subject.
- A-Level Science at grade C or above, 5 GCSEs at grade 4/C or above to include Maths, English Language and Science. GCSE Science must be grade B/5 or above.
- Part time entry requirements vary. Please scan the QR code to visit our website for more details.



Consortium for the  
Accreditation of  
Sonographic Education

**Location:** Lancaster, Placement and Online (blended delivery)

**Recruiting to:** UK/Rol/Settled in UK

**Course duration:**

Full-time: 2 Years,

Part-time: 3 Years

**Start date:** January

**Award:** MSc

**Delivery style:** Blended Learning

**FIND OUT MORE**

## **MEDICAL IMAGING: MAGNETIC RESONANCE IMAGING (MRI)**

MSC/PGCERT/PGDIP



This Royal College of Radiologists accredited course is designed for radiographers eager to expand their practice and stay updated on the latest developments in MRI. It's ideal for those working in settings such as the NHS, university research departments, and providers across the UK.

### **COURSE OVERVIEW**

You will combine academic modules with work-based clinical placements, receiving expert guidance from clinical practitioners and researchers. You will gain the knowledge required to create a safe and efficient environment for both patients and staff, alongside mastering techniques to obtain high-quality clinical images, even under challenging circumstances.

A key feature of this course is the support of a broad network of respected MRI radiographers, radiologists, and physicists—many of whom report MR images—who act as honorary lecturers and contribute to curriculum planning and delivery.

You will develop advanced critical thinking, research and independent enquiry skills, putting you in an excellent position to advance your career and take on the challenges that clinical leadership and more senior clinical roles can bring.

### **ON THIS COURSE, YOU WILL...**

- Access excellent networking opportunities within a facilitative and dynamic learning environment.
- Develop independent learning – allowing research into safety and advanced MR imaging techniques.
- Be taught in three one-week blocks spread throughout the academic year (typically in October, February and May).
- Receive mentorship from senior specialist clinical practitioners during your placements.

### **ENTRY REQUIREMENTS**

- Minimum Second Class Honours degree.
- Undergraduate qualification in Diagnostic Radiography.
- Minimum 12 months' equivalent full-time post-registration clinical experience. You must demonstrate that you will be able to work in a MR department for a minimum of 2.5 days per week.
- Reference in support of your application.



**Location:** Lancaster

**Recruiting to:** UK/Rol/Settled in UK/EU/EEA

**Course duration:** Part-time:  
3 Years (MSc), 2 Years (PGDip),  
1 Year (PGCert)

**Start date:** October

**Award:** MSc/PGCert/PGDip

**Delivery style:** In person (some modules: online)

**FIND OUT MORE**

## MIDWIFERY (PRE-REGISTRATION) MSC



**Are you passionate about making a difference in the lives of women, birthing parents, newborns, and families during this transformative period of their lives?**

**Prepare for a rewarding and fulfilling career supporting the growth of families before, during, and after the birth process and become a highly educated midwife through this Nursing and Midwifery Council (NMC) accredited course.**

### COURSE OVERVIEW

As a midwife, you will advocate for women, birthing parents, and newborns, working collaboratively with the wider healthcare team to ensure a safe and successful journey. You will gain the skills to provide compassionate and expert care, becoming a fully qualified midwife within three years.

Half of your course will be spent on placement, gaining hands-on experience across a variety of pregnancy and childbirth scenarios, including shorter placements in other diverse healthcare settings. This course will also equip you with postgraduate credentials and a prospective NHS Band 5 starting salary.

The NHS Learning Support Fund, offering at least £5,000 per year, is available to eligible students. For



more information and eligibility details, visit [nhsbsa.nhs.uk/lmf](https://nhsbsa.nhs.uk/lmf).

### ON THIS COURSE, YOU WILL...

- Undertake work-based practice to reinforce the theory developed during on-campus learning.
- Be supported by lecturers who have extensive experience in clinical midwifery and are all registered with the Nursing and Midwifery Council.
- Access our midwifery clinical skills facilities, enabling you to develop your hands-on clinical skills in a safe and supportive environment.
- Learn through practical placements and a variety of academic assessments, including written work, presentations, practical exams (OSCEs), and professional discussions.
- Register as a midwife with the Nursing and Midwifery Council (NMC) in the UK upon graduation.

### ENTRY REQUIREMENTS

- Minimum Upper Second Class (2:1) Honours degree in a related subject such as Nursing.
- GCSE in English Language, Mathematics and Biology or Combined Science at grade C/4 or above.

**Location:** Carlisle – Fusehill Street, Lancaster

**Recruiting to:** UK/Rol/Settled in UK

**Course duration:** Full-time: 3 Years

**Start date:** September

**Award:** MSc

**Delivery style:** Blended Learning

**FIND OUT MORE**



## PRE-REGISTRATION NURSING/ REGISTERED NURSE: ADULT NURSING MSc



In just two years, you'll develop the skills and knowledge needed to become a competent, compassionate adult nurse registered with the Nursing and Midwifery Council (NMC).

Balancing theory with practice, our MSc Adult Nursing is designed to prepare you for a career in a complex, demanding, and rewarding field, giving you the opportunity to build on your existing skills and transition into a fulfilling role.

### COURSE OVERVIEW

You will spend half of your NMC-accredited course on placement, gaining real-world experience across a variety of clinical environments. For example, accident and emergency, medical/surgical, older adults, orthopaedics, palliative care, and hospice nursing. You will obtain highly sought-after postgraduate credentials, with an NHS Band 5 prospective starting salary.

The NHS Learning Support Fund, offering at least £5,000 of financial support per year of study, is available to eligible students. For more information, visit [nhsbsa.nhs.uk/lzf](https://nhsbsa.nhs.uk/lzf).

### ON THIS COURSE, YOU WILL...

- Receive support from experienced practice assessors and supervisors whilst on placement, and from nursing staff and academics in both the classroom and simulated clinical environments.
- Be part of an intimate cohort and benefit from close tuition and tailored guidance throughout your studies.
- Have access to a range of technology to enhance your learning, including [clinicalskills.net](https://clinicalskills.net); OCULUS, a virtual reality headset for simulated activities; and a Pharmacology and Prescribing resource.

### ENTRY REQUIREMENTS

- Minimum Lower Second Class (2:2) Honours degree in any subject.
- English Language and Mathematics GCSE at grade C/4 or above.
- Minimum 500 hours of verified hands-on care experience in a designated health and/or social care setting.
- Applicants should not already hold a degree in Nursing.

**"I CHOSE THE UNIVERSITY OF CUMBRIA BECAUSE IT IS NEAR TO HOME AND IT HAD AN EXCELLENT REPUTATION FOR TURNING OUT GOOD QUALITY NURSES."**

– Catherine Hind

**Location:** Carlisle – Fusehill Street  
**Recruiting to:** UK/RoI/Settled in  
UK/EU/EEA/International

**Course duration:** Full-time: 2 Years  
**Start date:** September

**Award:** MSc  
**Delivery style:** Blended Learning

**FIND OUT MORE**

## **PRE-REGISTRATION NURSING/REGISTERED NURSE: MENTAL HEALTH NURSING MSC**

In just two years, you'll develop the skills and knowledge needed to become a competent, compassionate mental health nurse registered with the Nursing and Midwifery Council (NMC).

Using a person-centred approach, you'll learn how to facilitate the recovery of service users in various settings, with opportunities to learn about partnership approaches to caring for service users, carers, and families.

### **COURSE OVERVIEW**

This course provides graduates with the opportunity to transfer their skills, build on undergraduate experience, and become a fully qualified Nursing and Midwifery Council (NMC) registered nurse.

You'll spend half of your NMC-accredited course on placement, gaining real-world experience across a variety of professional environments, such as perinatal mental health, Child and Adolescent Mental Health Services (CAMHS), and dementia and memory matters. You will obtain highly sought-after postgraduate credentials, with an NHS Band 5 prospective starting salary.

The NHS Learning Support Fund, offering at least £5,000 of financial support per year of study, is available to eligible students. For more information, visit [nhsbsa.nhs.uk/lsf](https://nhsbsa.nhs.uk/lsf).

### **ON THIS COURSE, YOU WILL...**

- Receive support from experienced practice assessors and supervisors whilst on placement, and from nursing staff and academics in both the classroom and simulated clinical environments.
- Be part of an intimate cohort and benefit from close tuition and tailored guidance throughout your studies.
- Have access to a range of technology to enhance your learning, including [clinicalskills.net](https://clinicalskills.net) and OCULUS, a virtual reality headset for simulated activities.

### **ENTRY REQUIREMENTS**

- Minimum Lower Second Class (2:2) Honours degree in any subject.
- English Language and Mathematics GCSE at grade C/4 or above.
- Minimum of 500 hours of verified hands-on care experience in a designated health and/or social care setting.
- Applicants should not already hold a degree in Nursing.

**Location:** Carlisle – Fusehill Street  
**Recruiting to:** UK/RoI/Settled in  
UK/EU/EEA/International

**Course duration:** Full-time: 2 Years  
**Start date:** September

**Award:** MSc  
**Delivery style:** Blended Learning

**FIND OUT MORE**

## **OCCUPATIONAL THERAPY (PRE-REGISTRATION) MSC**

Our innovative occupational therapy degree is accredited by the Royal College of Occupational Therapists (RCOT) and approved by the Health and Care Professions Council (HCPC).

The course is designed to equip you with the skills and professional qualifications required to become a compassionate, empathetic occupational therapist. You'll learn how to support people to undertake the occupations they want, value and need, and champion for the rights and beliefs of individuals and communities.

### **COURSE OVERVIEW**

Building on your existing academic skills, you'll take part in a range of clinical practice sessions and hands-on learning experiences, as well as complete over 1,000 hours of clinical practice placements. Taking advantage of our exceptional partner links, you'll have the opportunity to work in a variety of settings with children, adults and older adults who face physical, social, or mental health challenges.

You'll use our simulation labs, home space, creative spaces, and more to develop your skills before going on placement. Throughout your studies, you'll also work alongside other health students to build your confidence and prepare you for a professional role.

The NHS Learning Support Fund, offering at least £5,000 of financial support per year of study, is available to eligible students. For more information, visit [nhs.uk/lmf](https://nhs.uk/lmf).

### **ON THIS COURSE, YOU WILL...**

- Be part of a close-knit cohort, with opportunities to work alongside your peers in small groups.
- Have access to excellent learning support from highly experienced occupational therapists.
- Benefit from our practical approach to teaching and learning. Our specialist facilities include purpose-built mock wards and flats, and simulation suites.
- Be fully supported by our teaching and student support teams, enabling you to learn your way.
- Take part in pre-placement practical skills sessions and simulated learning scenarios to prepare you for your real-world placements.

### **ENTRY REQUIREMENTS**

- Minimum Lower Second Class (2:2) Honours degree.
- GCSE English Language at grade C/4 or above.



**Location:** Carlisle – Fusehill Street  
**Recruiting to:** UK/RoI/Settled in  
UK/EU/EEA/International

**Course duration:** Full-time: 2 Years  
**Start date:** September

**Award:** MSc  
**Delivery style:** Blended Learning

**FIND OUT MORE**



## PHYSIOTHERAPY (PRE-REGISTRATION)

MSC



Our accelerated physiotherapy course will equip you with the techniques, knowledge, and skills to rehabilitate people from injury and enhance their quality of life—a truly rewarding profession where you can make a lasting difference.

In just two years, our course enables you to qualify as a physiotherapist accredited by the Chartered Society of Physiotherapy (CSP) and register with the Health and Care Professions Council (HCPC).

### COURSE OVERVIEW

Building on your existing academic knowledge, you will complete over 1,000 hours of clinical practice placements, taking advantage of our exceptional industry links across a range of specialties and locations.

Our expert tutors will use their professional experience to provide you with theoretical knowledge and hands-on opportunities in our physiotherapy and simulation suites. You will develop your examination, treatment, and leadership skills and graduate with a strong profile, opening up opportunities to work in the NHS, private treatment, and sporting sectors.

The NHS Learning Support Fund, offering at least £5,000 of financial support per year of study, is available to eligible students. For more information, visit [nhsbsa.nhs.uk/lsf](https://nhsbsa.nhs.uk/lsf).

### ON THIS COURSE, YOU WILL...

- Have access to excellent learning support from highly experienced physiotherapists.
- Learn the practical skills needed for the diagnosis and management of musculoskeletal, respiratory, and neurological conditions.
- Take part in pre-placement practical skills sessions and simulated learning scenarios to prepare you for your real-world placements.
- Be eligible to apply for membership to the Chartered Society of Physiotherapy (CSP) and register as a physiotherapist with the Health and Care Professions Council (HCPC).

### ENTRY REQUIREMENTS

- Minimum Lower Second Class (2:2) Honours degree.
- GCSE English Language at grade C/4 or above.



**Location:** Carlisle – Fusehill Street  
**Recruiting to:** UK/RoI/Settled in UK/EU/EEA/International

**Course duration:** Full-time: 2 Years  
**Start date:** September

**Award:** MSc  
**Delivery style:** In person

**FIND OUT MORE**

## PSYCHOLOGY: ENVIRONMENT, HEALTH AND WELLBEING

MSC



**Are you a psychology or social science graduate interested in learning how you can use the environment to enact positive changes on health and wellbeing?**

**Our innovative fully online course will develop your critical understanding of the interrelationship between organisations and the environment and encourage you to explore how outdoor spaces can improve people's health and wellbeing.**

### COURSE OVERVIEW

Build on your academic knowledge and professional experience to take an in-depth and critical look at environmental psychology as a multidisciplinary area. Explore your own professional values and ethics and the importance of these in your professional life.

We've earned a great reputation nationally for our cutting-edge research methods and you'll be taught to use diverse specialist methods, equipping you for future challenges and advancing your career prospects.

**"I CHOSE THIS PROGRAMME AT CUMBRIA BECAUSE IT OFFERED AN ENTIRELY ONLINE AND FLEXIBLE SCHEDULE THAT WORKED WITH MY JOB, HOBBIES, AND LIFE. THE COURSES WERE AMAZING TO BEGIN A PROCESS TOWARDS A THESIS THAT I CARED ABOUT."**

– Mitch Heron

### ON THIS COURSE, YOU WILL...

- Explore and apply psychological literature to current issues, contexts, and experiences related to the environment, health, and wellbeing.
- Receive high-quality teaching, support, and guidance from our expert lecturing team, who are actively engaged in research and practice.
- Tailor your learning experience by choosing topics that suit your professional interests and career goals.
- Engage in primary or secondary research for your dissertation.

### ENTRY REQUIREMENTS

- Minimum Lower Second Class (2:2) Honours degree or equivalent in a related subject.
- If English is not your first language, please read our English Language requirements at [cumbria.ac.uk/study/international-students/entry-requirements/](https://cumbria.ac.uk/study/international-students/entry-requirements/).

**Location:** Online

**Recruiting to:** UK/Rol/Settled in  
UK/EU/EEA/International

**Course duration:** Full-time: 1 Year,  
Part-time: 2 Years

**Start date:** September

**Award:** MSc

**Delivery style:** Distance Learning

**FIND OUT MORE**

## **PSYCHOLOGY: LEGAL AND CRIMINOLOGICAL** MSC



If you have a background in psychology, sociology, or criminology, our master's course will provide you with valuable insight into legal and criminological psychology.

As well as developing your understanding of the criminal justice system and ways to work with criminal justice populations, you'll have the opportunity to examine both practice and research from theoretical perspectives, developing comprehensive knowledge of a broad range of topics in forensic settings.

### **COURSE OVERVIEW**

Our course enables you to build on your existing learning experiences to advance your academic and professional development in a stimulating and challenging environment. You will gain specialised knowledge and a critical awareness of issues in legal and criminological psychology, as well as covering the application of psychology to forensic and legal issues.

Teaching takes place through a variety of blended learning and campus-based activities, explicitly designed to meet the needs of a range of contexts.

### **ON THIS COURSE, YOU WILL...**

- Explore and apply psychological literature to current issues, contexts, and experiences around legal and criminological settings.
- Receive high-quality teaching, support, and guidance from our expert lecturing team, who are actively engaged in research and practice.
- Learn valuable transferable skills in postgraduate research, which are highly sought after by employers.
- Tailor your learning experience by choosing topics that suit your professional interests and career goals.

### **ENTRY REQUIREMENTS**

- Minimum Lower Second Class (2:2) Honours degree or equivalent in a related subject.
- If English is not your first language, please read our English Language requirements at [cumbria.ac.uk/study/international-students/entry-requirements/](https://cumbria.ac.uk/study/international-students/entry-requirements/).

**Location:** Carlisle – Fusehill Street  
**Recruiting to:** UK/Rol/Settled in  
UK/EU/EEA/International

**Course duration:** Full-time: 1 Year,  
Part-time: 2 Years  
**Start date:** September

**Award:** MSc  
**Delivery style:** Blended Learning

**FIND OUT MORE**



## **SPORT AND EXERCISE REHABILITATION** MSC



**Kickstart your career in sport and exercise rehabilitation with our one-year programme, which is specially designed for graduate physiotherapists or other health professionals looking to diversify their skills and enhance their employment prospects.**

**You'll gain advanced knowledge of sports science and sport injuries in order to work at the forefront of the sports industry, whilst also developing a critical approach to clinical practice and a wide range of transferrable interpersonal skills.**

### **COURSE OVERVIEW**

Our course offers you the opportunity to specialise in musculoskeletal injuries and exercise rehabilitation, preparing you for roles in high-performance sport as well as other areas of sport and exercise rehabilitation clinical practice. A strong emphasis is placed on applying theoretical knowledge in real-world settings, allowing you to develop essential vocational skills and gain hands-on experience.

Throughout the programme, you'll explore a range of applied manual therapeutic techniques, including soft tissue skills, functional rehabilitation, and the pathophysiology of treatment techniques. Your understanding of athletes' needs will deepen as you conduct clinical and physical assessments, interpret data, and apply insights to prevent injuries, support rehabilitation, and enhance performance.

### **ON THIS COURSE, YOU WILL...**

- Learn in our specially designed sport and exercise rehabilitation facilities, including our sports injury clinic, functional rehabilitation and strength and conditioning suite, and human performance laboratories. You'll also benefit from a range of cutting-edge equipment to support your learning, such as focused shockwave for injury treatment.
- Have access to additional courses and industry-leading qualifications to enhance your CV, including Rocktape FM1 and the Pre-Hospital Immediate Care in Sport (PHICIS) Level 2 course.
- Complete a 100-hour practitioner placement, taking advantage of our key partnerships with professional and academy-level sports clubs, and sports injury and rehabilitation clinics.

### **ENTRY REQUIREMENTS**

- Minimum Lower Second Class (2:2) Honours degree or equivalent in a relevant subject (physiotherapy or related health profession).
- If English is not your first language, please read our English Language requirements at [cumbria.ac.uk/study/international-students/entry-requirements/](https://cumbria.ac.uk/study/international-students/entry-requirements/).

**Location:** Lancaster  
**Recruiting to:** UK/RoI/Settled in  
UK/EU/EEA/International

**Course duration:** Full-time: 1 Year  
**Start date:** September

**Award:** MSc  
**Delivery style:** In person

**FIND OUT MORE**

## **BUSINESS ADMINISTRATION**

### **MBA**

If you aspire to be a successful entrepreneur or obtain a high-level management position, our Master of Business Administration (MBA) will open doors for you to work anywhere in the world and prove your expertise within your industry.

Our MBA is designed to integrate your own work-based learning with your expertise, skills, and ethics to become a business leader who can think logically and independently.

### **COURSE OVERVIEW**

Our globally recognised MBA will consolidate your understanding of contemporary business and management principles as well as the current issues impacting organisations. Over the course of the programme, you'll gain the confidence to make high-end business decisions and secure business sustainability.

The skills and knowledge you develop will enable you to progress your career into more senior roles or act as a stepping-stone into a new profession.

### **ON THIS COURSE, YOU WILL...**

- Study at our business school alongside like-minded people, creating a beneficial network for your future career.
- Benefit from our strong links with businesses and partnerships both nationally and internationally, boosting your earning potential, networking opportunities, and employment prospects.
- Complete a piece of postgraduate research on a specific area that interests you.
- Gain knowledge from tutors involved in international research, keeping your learning up to date.

### **ENTRY REQUIREMENTS**

- Minimum First- or Second-Class Honours degree.
- Applicants should ideally have at least 2 years' work experience, although highly motivated candidates who can show that they would benefit from the course, and have the commitment to complete it successfully, will be considered.

**"MY MBA WILL OPEN DOORS FOR ME TO WORK ANYWHERE IN THE WORLD."**

– Anderson Uvie-Emegbo

**Location:** Lancaster, London  
**Recruiting to:** UK/RoI/Settled  
in UK/EU/EEA/International

**Course duration:** Full-time: 1 Year,  
Part-time: 2 Years  
**Start date:** September

**Award:** MBA  
**Delivery style:** In person

**FIND OUT MORE**

## INTERNATIONAL MANAGEMENT MSC

**Develop the skills and knowledge you need to thrive in the fast-paced global business world with a Master's in International Management.**

**Our course is designed to deepen your professional knowledge and bolster your career prospects working in multinational companies. You'll learn about international business practices, operations, sustainability, and strategic management in the context of today's complex and changing globalised marketplace.**

### COURSE OVERVIEW

You will study in a 'global classroom' alongside international students, where you can experience a social and cultural understanding of practice in other countries. Our course will help to inform your cross-cultural business reasoning, practice, and problem-solving skills while providing you with the opportunity to build an international network of contacts.

Your studies will be enhanced with work-based projects and workshops, giving you every opportunity to build your business confidence and gain an authentic insight into the scenarios and challenges that you will face in your future career.

### ON THIS COURSE, YOU WILL...

- Explore international management papers and research to gain a well-rounded picture of the international business landscape.
- Evaluate how theory can be informed by and applied to the current economic climate, giving you the skills you need to manage and lead in the current world of business.
- Study at our dedicated and professional business school where you will meet like-minded people, make beneficial business contacts, and enhance your personal learning and skills for a successful career.
- Work with tutors who have a wealth of experience in organisations such as the United Nations.
- Have the flexibility to study part-time and continue working while you gain your MSc.

### ENTRY REQUIREMENTS

- Minimum First- or Second-Class Honours degree.

**"THE STAFF IN THE INTERNATIONAL OFFICE REALLY HELPED ME A LOT WITH MY LIFE AND STUDY AFTER I ARRIVED HERE."**

– Jinlu Lai

**Location:** Lancaster  
**Recruiting to:** UK/RoI/Settled in UK/EU/EEA/International

**Course duration:** Full-time: 1 Year,  
Part-time: 2 Years  
**Start date:** September  
**Award:** MSc

**Delivery style:** In person,  
Blended Learning

**FIND OUT MORE**



## PROJECT LEADERSHIP MSC



Our unique postgraduate course is the first to be recognised and accredited by the Association for Project Management (APM). It is designed to enhance your skills as a leader in a complex project environment and will provide you with the technical knowledge and professional practice requirements needed for chartership.

### COURSE OVERVIEW

Led by our nationally acclaimed Project Management team, and developed in collaboration with Project Academy Ltd, our course is aligned to the APM Chartered Project Professional (ChPP) Standard, a globally acknowledged benchmark in the profession.

You will gain a recognised assessment in both project management professional practice and technical knowledge, a key requirement in support of an application for Chartered Project Professional status.

You will also be eligible to apply for ChPP status with the APM via the new Pathway 4 application process (formerly known as 'Route 2').



### ON THIS COURSE, YOU WILL...

- Apply your learning to your day-to-day role with a flexible delivery pattern that complements the workplace environment.
- Work with the leading providers of Project Management education in the UK. In recent years, we have partnered with employers such as Sellafield Ltd., BAE Systems, Rolls Royce, the NHS, and the BBC.
- Study a range of interactive project topics and develop your knowledge of essential project management concepts and principles.
- Learn from our expert lecturers, who have a wealth of hands-on experience from a multitude of different sectors, including IT, engineering, finance, and the Armed Forces.

### ENTRY REQUIREMENTS

- Minimum Lower Second Class (2:2) Honours degree, plus an APM Project Management Qualification (PMQ).
- Level 2 English and Maths.
- At least three years' experience, and current employment, in a project, course or portfolio management role, or five years' recent experience if not currently in such a role.

**Location:** Online  
**Recruiting to:** UK/Rol/Settled in UK

**Course duration:** Part-time: 2 Years  
**Start date:** September  
**Award:** MSc

**Delivery style:** Online (2 days in person desirable for induction and up to a day for final assessment necessary)

[FIND OUT MORE](#)

## **DOCTOR OF BUSINESS ADMINISTRATION**

DBA

Our doctoral-level course is tailored for seasoned executives and accomplished professionals in leadership and management who are aiming to enrich their insights and expertise.

You'll have extensive opportunities to engage in applied research that not only advances your knowledge but also contributes significantly to the evolution of professional practice and related theories and concepts.

### **COURSE OVERVIEW**

This course goes beyond traditional learning; it's a personalised experience where you refine your critical thinking, strategy development, and problem-solving skills, and customise your research in business, management, or leadership to strengthen your organisation and stakeholder engagement.

Guided by dedicated academic advisors, you will engage in a self-directed applied research project, participate in seminars and workshops, and complete modules covering critical thinking, leadership, research strategy, and advanced methods.

The course culminates in the submission of your DBA thesis and an oral exam, ensuring you not only earn a prestigious qualification but also emerge with refined skills crucial for leading in dynamic business landscapes.

**Location:** Ambleside

**Course duration:** Part-time: 4–5 Years

**Award:** DBA



## ON THIS COURSE, YOU WILL...

- Design and implement a research project that explores a specific management, leadership, and/or collaboration question.
- Critically assess, select, and implement applied research methodologies and methods within complex organisational, leadership, and collaboration contexts or more specific professional settings.
- Synthesise, interpret, and rigorously apply relevant theoretical frameworks and research findings in relation to complex business, management, and leadership contexts and issues.
- Develop high-level analytical and conceptual skills, facilitating questioning and critical debate about established theoretical orthodoxy and challenges to such orthodoxy.
- Engage in and manage a process of high level critical reflective personal and professional development, leading to the enhancement of your own professional practice within an organisational context or a specific domain.

## ENTRY REQUIREMENTS

- A First or Upper Second Class (2:1) Honours degree, or equivalent, in a related discipline from a recognised university in the UK or a comparable university overseas; or a master's degree.
- By exception, applicants will be considered with additional evidence of substantial relevant professional experience instead of relevant academic qualifications.



**Recruiting to:** UK/Rol/Settled in  
UK/EU/EEA/International

**Start date:** October  
**Delivery style:** In person

**FIND OUT MORE**



## CONTINUING PROFESSIONAL DEVELOPMENT

With flexible study pathways available to suit your lifestyle, our CPD courses are designed to complement the workplace environment.

CPD courses offer the opportunity to learn and develop new skills in bitesize modules and qualifications at your pace, often leading to achieving a complete postgraduate qualification depending on what you wish to pursue.

From short courses covering the fundamentals to full master's degrees, we work with you to tailor your CPD education to meet your personal and professional development needs.

We offer an array of CPD and professional qualification courses in areas such as health, education, business, project management and leadership.

**FIND OUT MORE**



## POSTGRADUATE RESEARCH DEGREES

A postgraduate research degree offers the perfect opportunity to follow your passion, enhance your skills and influence the world around you through research.

We offer a range of postgraduate research degrees, so you can ensure your programme of work matches your interest and ambitions. Whether this be a traditional PhD format, a PhD by Art Practice or PhD by Publication, a Master of Research, Doctor of Business Administration, or a Professional Doctorate.

We are here to support you every step of the way, from informal enquiries to formal applications, from the start of your programme to its completion and beyond.

[FIND OUT MORE](#)

## DISCLAIMER

This prospectus aims to answer your questions about life at the University of Cumbria and the postgraduate academic provision on offer. We have made every effort to ensure the prospectus is accurate at the time of printing.

In exceptional circumstances, it can be necessary to make changes; for example, to courses, facilities, or fees. Changes to courses may, for example, consist of variations to the content and the method of delivery of our programmes and other services; the discontinuation of programmes or other services; or the merging and combining of programmes.

If a programme change or closure is proposed, we will take all reasonable steps to minimise disruption to students. This will include informing applicants and students of the changes in advance.

For a complete list of courses currently on offer from the University of Cumbria, please visit our website [cumbria.ac.uk](https://cumbria.ac.uk).





## CONTACT INFORMATION

If you have any questions about Cumbria, our courses, campuses, or facilities, please contact us.

**Phone:** [01228 588 588](tel:01228 588 588)

**Email:** [enquirycentre@cumbria.ac.uk](mailto:enquirycentre@cumbria.ac.uk)

## CAMPUS DETAILS

### **Ambleside Campus**

University of Cumbria, The Barn, Rydal Road, Ambleside, Cumbria, LA22 9BB.

### **Carlisle Brampton Road Campus**

University of Cumbria, Brampton Road, Carlisle, Cumbria, CA3 9AW.

### **Carlisle Fusehill Street Campus**

University of Cumbria, Fusehill Street, Carlisle, Cumbria, CA1 2HH.

### **Lancaster Campus**

University of Cumbria, Bowerham Road, Lancaster, Lancashire, LA1 3JD.

### **London Campus**

University of Cumbria, 58 E India Dock Road, London, E14 6JE.

