

*Eden Bear*  
*Visits*  
Carnforth





WELCOME

TO

CARNFORTH

Today I'm  
visiting  
Carnforth.

Carnforth  
Community  
Primary  
School

Carnforth  
Community  
Primary  
School



Main  
Entrance



I've made  
friends with  
Paddington and  
Rainbow Bear.



COUNTY

LIBRARY

**COVID-19**  
Wash your hands regularly and thoroughly.  
Avoid contact with people who have COVID-19.  
Avoid touching your face.  
Cover your mouth and nose when you cough or sneeze.  
Stay at home if you have symptoms and get tested.

Lancashire  
**Carnforth Library**  
Monday  
Tuesday  
Wednesday  
Thursday  
Friday  
Saturday  
Sunday

I love the library.



This looks like a good book.

lauren child  
LIZZY STEWART  
WANDER

JULIA DONALDSON & ALICIA MONKS  
What the Ladybird Heard NEXT  
From the creators of What the Ladybird Heard  
WITH A LETTER ON EVERY PAGE

The Fairytal Hairdresse  
and the PRINCESS

an Elepha  
RACING CAR



I'm a librarian.  
I hope you  
enjoy your  
book.





I could fill a big trolley with shopping here.





Baby swans are called cygnets, how many can you count?

A photograph of a two-story house with a light-colored stone facade. The house has several windows with white frames and a dark roof. A black downspout runs vertically down the side of the house. In the foreground, a low stone wall is visible, and a brown teddy bear is sitting on top of it. An orange speech bubble is overlaid on the image, containing the text "These houses are very new." The sky is clear and blue.

**These houses  
are very new.**



This house is very old.

IWW  
1688



# ORRTH STATION ERITAGGE CENTRE



Warning  
Do not trespass  
on the Railway  
Penalty £1000

CELEBRATING  
25 YEARS OF BIRER ENCOUNTER  
1991-2016

Automatic Door

CARNFORTH STATION  
HERITAGE CENTRE  
Open Mon to Sat 12.00 - 16.00

If this door is locked  
Please ENTER / EXIT Station  
via gates at end of Building

This is the  
train station.





I could go to London.

Tickets please.



It's very loud when the trains whizz by.

It's a beautiful flower bike.



Can I have an ice-cream please?



NHS

Rainbows  
make me  
happy.

KEYWORKERS





This is where the fire engine lives.





A large, fluffy brown teddy bear is in the foreground, looking out over a street. The street is lined with multi-story brick buildings. On the ground floor, there are several shops. From left to right, the visible shop signs are: 'Animal Aid Trust' with the tagline 'An Compassion for a Haring World', 'BETFRED the bonus king', and 'Poco Pet Supplies'. There are several cars parked along the side of the road, including a dark SUV with the license plate 'PF12 UPA'. The sky is overcast.

This is the High Street.



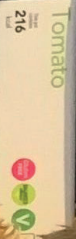
There are lots of shops on the High Street.



Yummy.



Delish  
Tomato  
216



... conflict in Ukraine, some o...  
... ts containing sunflower oil may be  
... d with rapeseed oil.

05  
... to our Jalapenos.

... allergen  
... customer

WE THE GIFT



**SWEET TREAT**  
+ REGULAR HOT DRINK

£2.50\*

Glazed Ring & Doughnut  
85p  
£1.00

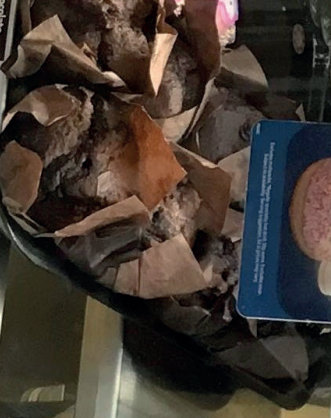
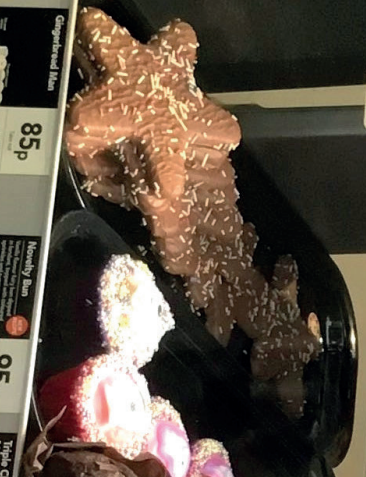
Super Strand Doughnut  
£1.20

Current Counters Doughnut  
£1.10  
£1.30

**SWEET TREAT**  
+ REGULAR HOT DRINK  
£2.40

Triple Chocolate Doughnut  
£1.10  
£1.30

Pink & Vanilla Doughnut  
£1.10  
£1.30



Glazed Ring & Doughnut  
85p  
£1.00

Monthly Bun  
95p  
£1.15

Triple Chocolate Doughnut  
£1.15  
£1.40

Delish Bun  
£1.10  
£1.30

John Doughnut  
75p  
90p

£1.00  
£1.00

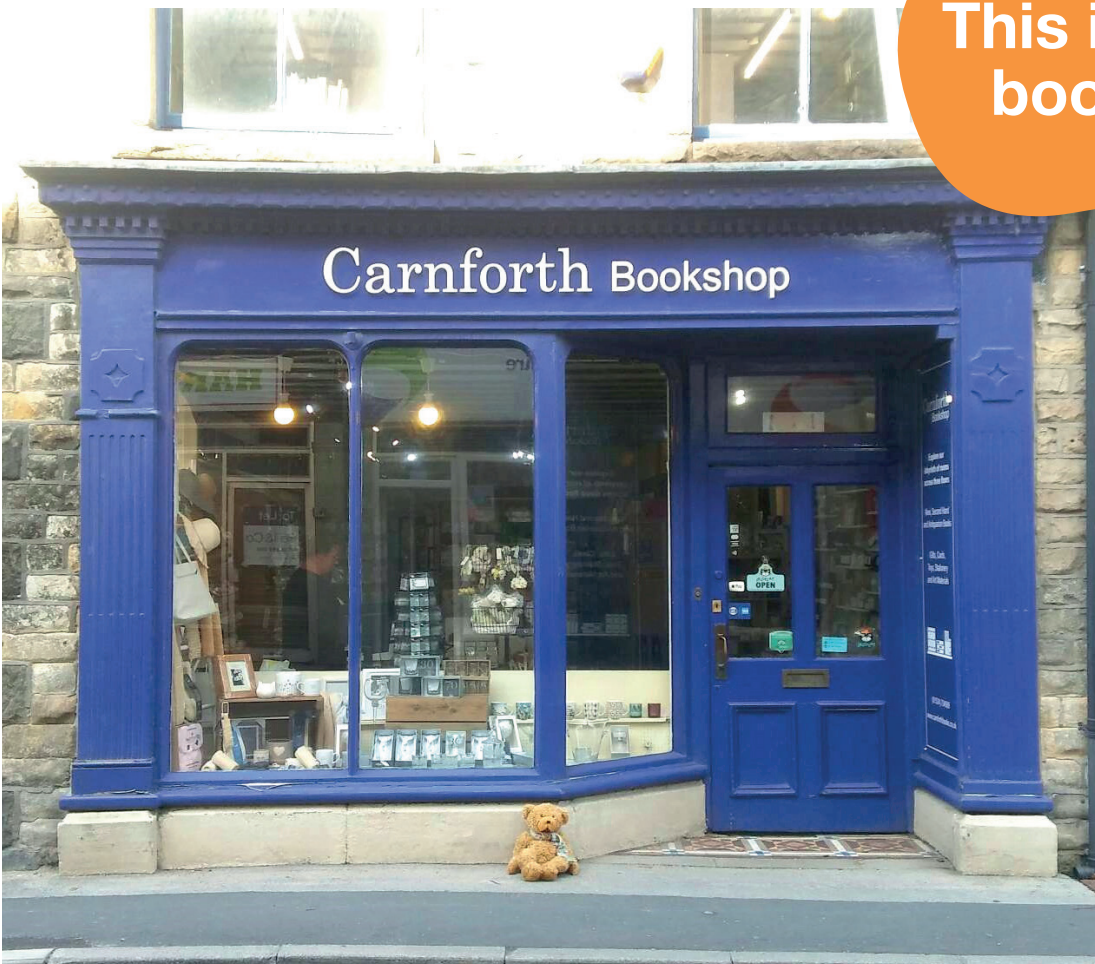
JAMMY HEART BISCUIT  
57p  
40p

Allergen information is available in our allergen guide - just ask to see it or view online at greggs.co.uk

White Chocolate Cookie  
£1.00

Triple Chocolate Cookie  
£1.00

Cookie  
75p  
90p



This is a huge bookshop.



Oh no, it's a  
Gruffalo!

LIA DONALDSON • AXEL SCHEFFLER  
THE  
GRUFFALO





Careful, this cross-road is very busy.



It's nearly time  
to go home.



I could come here if I was poorly.





That was a good stroll. Can you remember all the things I've seen in Carnforth?

Carnforth  
Community  
Primary  
School



in partnership with:



Morecambe Bay  
Curriculum

