



#LOVEYOURSTORY



University of
CUMBRIA

YOUR STORY STARTS HERE

96%
OF OUR STUDENTS ARE IN
WORK OR STUDY WITHIN 15
MONTHS OF GRADUATING



University of
CUMBRIA

**OPEN DAY PROGRAMME
AMBLESIDE**

HELLO! LET'S GET YOU CHECKED IN

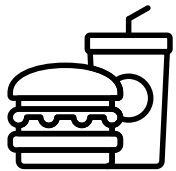


Registration
09:30 - 10:30am
Langdale Building

Please note that we have split Welcome talks

- 10:00 Outdoors and Geography
- 10:30 Forestry, Woodland and Conservation (Postgraduate courses are not compulsory) Langdale Building Lecture Theatre

Once you have arrived on site, our friendly teams will guide you to the event registration area. Checking in is key to making sure you get your welcome bag, event programme and get your day off to a great start.



A bite to eat and drink

Need a place to stop and refuel, grab some breakfast, a spot of lunch or just a drink? Head to the **Barn (map key 1)** where you will find an array of drinks, snacks and meals.



WHAT'S ON TODAY?



Welcome talk

1



Explore your course

2



Support talks

4



Take a tour

3



Come and chat

5

1

WELCOME TALK

10:00 Outdoors and Geography 10:30 Forestry, Woodland and Conservation Langdale Building. Pop along to our welcome talk to find out about our Ambleside Campus and what makes the University of Cumbria so unique and special.

2

EXPLORE YOUR COURSE

There are multiple ways to find out about our courses, from spending time in the facilities you will be learning in, to attending course talks, hands on interactive sessions and one to one advice.

3

TAKE A TOUR

Our campus and accommodation tours run throughout the day. Led by expert staff and Student Ambassadors, check out our state of the art facilities and the place that our students call home.

4

SUPPORT TALKS

Wondering what applying to Uni involves? Come along to one of our support talks where we will guide you through the process of applying, student finance and much more.

5

COME AND CHAT

12:00 - 3:00 The Beehive. Our friendly Support Services teams are on hand throughout the day on a one to one drop in basis. Each has their own area where you can ask questions with Admissions, Money Advice, Student Life, Disability and Learning Difficulty support.



WE'RE HERE FOR YOU

Our range of support talks are designed to give you the information that you need to apply for your course, student finance and much more.

1 WELCOME TALK

- 10:00 Outdoors and Geography
- 10:30 Forestry, Woodland and Conservation

Langdale Building Lecture Theatre, Map Key 5

Duration: 30 minutes

The best place to start your day is by coming along to our welcome introduction where you will find out what is so unique and special about studying at Cumbria.

We are here from the first day that your journey begins, offering you support in applying, money matters, accommodation, student life, academic support and guidance and other specialist requirements.

Our dedicated team are here for you whenever you need us.

We do things a little differently here at Ambleside and if you are travelling the day before, why not explore everything Ambleside has to offer. We have some great restaurants, bars and coffee shops for you to enjoy.

2 EXPLORE YOUR COURSE

There are multiple ways to find out about our courses, from spending time in the facilities you will be learning in, to attending course talks and one to one advice.

Our classrooms are the great outdoors so please bring your outdoor clothing and footwear for a great interactive activity. More detail for our interactive sessions will be sent to you nearer the time of the event.

OUTDOORS AND FORESTRY

Forestry and Forest Management & Woodland Ecology and Conservation.
Welcome talk at 10:30am

11:00	Course Talk where you will meet your academic tutor, students and find out everything about your course.	Charlotte Mason Building Leadership Centre
12.30	One to one drop in. A further opportunity to engage with the course team.	The Beehive

Outdoor Adventure and Environmental Studies, Outdoor Education & Outdoor Leadership. Welcome talk at 10:00am

10:30	A great opportunity to get details about all outdoor programmes and opportunities in the future. Looking at extra curricular activities such as UpSkill and National Governing Body Awards. Enjoy a facilities tour and everything available to you off site.	Charlotte Mason Building Franklin and Heelis
-------	---	--

Outdoor Adventure and Environmental Studies, Outdoor Education & Outdoor Leadership. Welcome talk at 10:00am

12:30	One to one drop in. A further opportunity to engage with the course team.	The Beehive
-------	---	-------------



SCIENCE AND CONSERVATION

Animal Conservation Science. Welcome talk at 10:30am

11:00	Course Talk where you will meet your academic tutor, students and find out everything about your course.	Langdale Building Lecture Theatre
12:30	One to one drop in. A further opportunity to engage with the course team.	The Beehive

Marine and Freshwater Conservation. Welcome talk at 10:30am

11:00	Course Talk where you will meet your academic tutor, students and find out everything about your course.	Langdale Building Lecture Theatre
12:30	One to one drop in. A further opportunity to engage with the course team.	The Beehive

Geography. Welcome talk at 10:00am

10:30	Course Talk where you will meet your academic tutor, students and find out more about your course, field trips and the facilities we have waiting for you.	Langdale Building Room 1.01
12:30	One to one drop in. A further opportunity to engage with the course team.	The Beehive

POSTGRADUATE COURSES

MA Outdoor and Experiential Learning

12:30	A great opportunity to really get to know your course and your tutor.	Room Langdale Building 1.01
-------	---	-----------------------------

MA Literature, Romanticism and the English Lake District

12:30	A great opportunity to really get to know your course and your tutor.	Room Charlotte Mason Building 0.05
-------	---	------------------------------------





3 TOURS

CAMPUS TOURS

11:30, 12:00, 12:30, 1:00, 1:30, 2:00, 2:30 Join your tour point outside Langdale Building Lecture Theatre, Map Key 5 Duration: 30 minutes

Get a feel for where you will be studying and find out what makes our Ambleside campus so unique. Our expert staff and Student Ambassadors will take you on a 30-minute tour of your campus showing you our teaching and study spaces, specialist course facilities and much more.

ACCOMMODATION TOURS

11:30, 12:00, 12:30, 1:00, 1:30, 2:00, 2:30 Join your tour point outside Langdale Building Lecture Theatre

Accommodation Officer Wylie will be there to answer all your questions and show you around. **Get a feel for where you could be living, by exploring our halls of residence.**





4 SUPPORT TALKS

APPLICATION ADVICE AND STUDENT FINANCE EXPLAINED

13:00 Langdale Building, Lecture Theatre, Map Key 5

Duration: 30 minutes

Everything that you need to know about applying to University through UCAS and accessing student finance.

5 COME AND CHAT

Academic Course Team

Our Academic Team will be available **from 12:30** to answer any questions you may have. We know that choosing the right course for you is key to making your decisions.

Support Services Drop in between 12:30-15:00, The Beehive, Map Key 2

Come and see what's on offer to students and an opportunity to put your questions to our expert support teams

Admissions Team

Our friendly team can help you with your university application, provide clarity on entry requirements, equivalency qualifications and discuss access and mature entry routes into university.

Money Advice

Receive advice on applying for student finance and applying for student loans.

Disability and SpLD

Find out how the University of Cumbria can support you with a range of additional needs, such as medical conditions, visual/hearing/mobility impairments, Autism and mental health.

Student Experience

Chat to our current students about their UoC experience and all the things they love about living in Ambleside. Discover the clubs and societies on offer and what life is like on campus.



LOVE YOUR INSTITUTE

OUR INSTITUTES

Will your story be one of changing the world? For you, studying at university is about gaining the skills you need to go on and work towards the greater good of society.

Will your story be one of striving for a particular career? For you, your university education needs to catapult you into your dream career, where you stand out against your competitors with an experienced edge.

Will your story be one of pursuing your passion? For you, studying at university is about getting the chance to explore your interests much more. A career will come in the future, but for now it's about the experience and developing yourself. Whatever you want your story to be and whatever your reasons for wanting to study at university, we have hundreds of courses across four specialist institutes, which offer a range of flexible multidisciplinary courses: Institute of Science and Environment; Institute of Health; Institute of Education, Arts & Society; and Institute of Business, Industry and Leadership.

Love your story with them.



Education,
Arts &
Society



Health



Science &
Environment



Business,
Industry &
Leadership

YOUR HOME AT CUMBRIA

Imagine waking up to the smell of coffee brewing and the sound of flatmates chatting. Leave the comfort of your warm, cosy bed and open your curtains to a view of green campus and old heritage stone walls, or the stunning London city skyline, or maybe the rolling Lake District hills.

For first year students, accommodation is at the heart of the university experience, where lifelong friendships are made, culinary inventions are shaped, and memories of celebrations are created.

Whichever location you decide, this is your home and your story.

 **AFFORDABLE LIVING**

EN-SUITE AND SHARED FACILITIES 

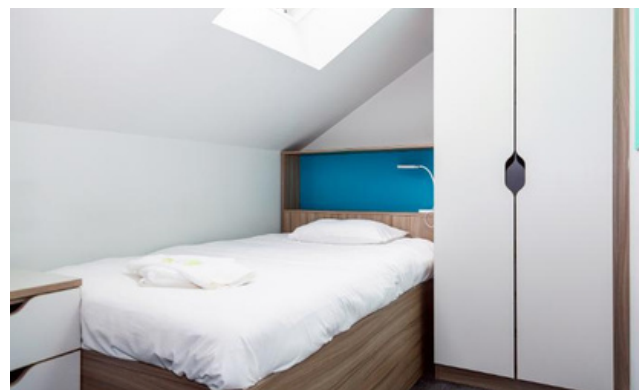


GREAT LOCATIONS CLOSE TO CAMPUS

YOUR RIGHT TO A QUALITY HOME

THE ACCOMMODATION CODE

SAFE AND GOOD QUALITY ACCOMMODATION



FELL COURT

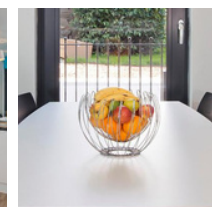
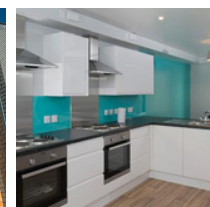
LOCATION: Rydal Road, Ambleside

AVAILABILITY: 71 bedrooms, within 7 town houses

ROOM TYPE: En-suite, open plan kitchen dining and lounge

STUDENTS PER FLAT: 8-11 students

PRICE: £131.00 PW



FAIRFIELD HALLS

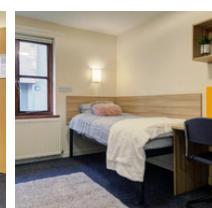
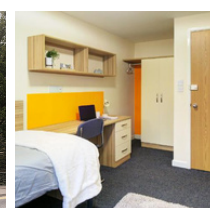
LOCATION: Rydal Road, Ambleside

AVAILABILITY: 40 bedrooms

ROOM TYPE: En-suite, communal kitchen spaces per floor, with social lounge/common room on the ground floor.

STUDENTS PER FLAT: 10 students

PRICE: £116.00 PW





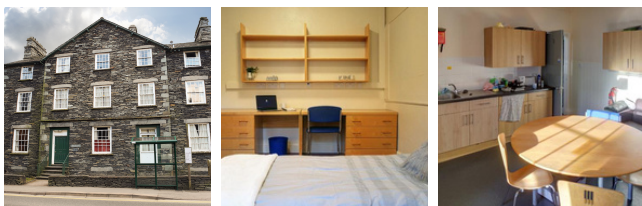
HELVELLYN HALLS

LOCATION: Rydal Road, Ambleside

AVAILABILITY: 20 bedrooms

ROOM TYPE: Mix of standard and large single, spread across 3 floors

PRICE: £96.00 PW standard single, £104.00 PW large single.



THE COTTAGES

LOCATION: Nook Lane, Ambleside

AVAILABILITY: 4-5 students

ROOM TYPE: Self-catered standard and large single rooms, with both a front garden and a rear yard.

PRICE: £96.00 PW standard single, £104.00 PW large single.



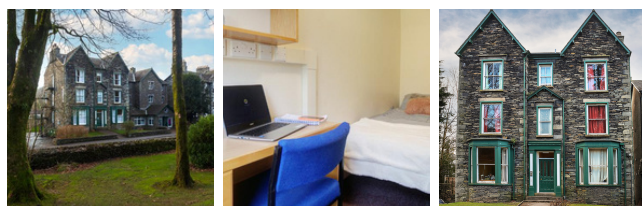
WANSFELL HALLS

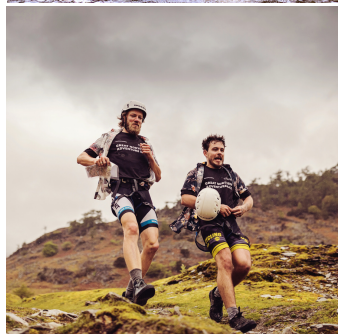
LOCATION: Rydal Road, Ambleside

AVAILABILITY: 11 bedrooms

ROOM TYPE: Mix of standard and large single, communal kitchens and dining areas, also with access to the social lounge based in Fairfield Halls.

PRICE: £96.00 PW standard single, £104.00 PW large single.





LOVE YOUR CAMPUS

AMBLESIDE

As the only UK university campus within a UNESCO World Heritage Site, our Ambleside campus offers the opportunity to study in one of the UK's most stunning locations: the Lake District National Park. Explore the breathtaking Lake District and level up your social media game with gorgeous shots of fells, picturesque lakes, and all your outdoorsy adventures. Picture yourself paddleboarding with friends across Lake Windermere or hiking some of the UK's most stunning peaks – you'll truly be living your best student life in Ambleside.

But it's not just about the outdoors – after a day of exploring, cosy up in a café with a hot chocolate, make the most of our vibrant restaurant scene, or grab drinks with course-mates at one of Ambleside's buzzing bars and pubs. And, for a touch of city life, the lively cities of Lancaster, Carlisle and Preston are all within easy reach.

Join us in Ambleside for a truly unique student experience, surrounded by unbeatable natural beauty and endless opportunities for adventure.








FIND
OUT
MORE

GET IN TOUCH

Let us know how we did and what you thought of your day. Scan the QR code to complete a quick survey. As a thank you for sharing your feedback you will have the opportunity to enter our prize draw for a chance to win an Amazon gift card!



CONTACT US

-  universityofcumbria
-  @cumbriauni
-  @cumbriauni
-  01228 588588
-  enquirycentre@cumbria.ac.uk

CHAT TO A STUDENT, SCAN THE QR CODE BELOW



PLAN YOUR DAY

9:30am

10:00am

10:30am

11:00am

11:30am

12:00pm

12:30pm

1:00pm

1:30pm

2:00pm

2:30pm

3:00pm

AMBLESIDE CAMPUS

UNIVERSITY BUILDINGS

- 1 The Barn
- 2 Beehive
- 3 Borrowdale
- 4 Charlotte Mason Building (CMB)
- 5 Langdale (LD)
inc. Percival Lecture Theatre
- 6 Low Nook
- 7 Millet
- 8 Rigg Cottage
- 9 Scale How
- 10 Stockgyll
- 11 Estates

STUDENT RESIDENCES

- A Ashfield
- B Beechfield
- C Castle Crag
- D Eagle Crag
- E Fairfield
- F Fellbarrow
- G Greenbank North
- H Greenbank South
- I Hazeldene
- J Heathfield
- K Helvellyn
- L Rosthwaite
- M Seathwaite
- N Stybarrow
- O Wansfell
- P Yewbarrow



Address
University of Cumbria
The Barn, Rydal Road,
Ambleside,
Cumbria,
LA22 9BB

Telephone
01539 430274

CAMPUS KEY MAP

- Main Reception
- Building Access
- Accessible Entrance
- Car Park
- Designated Disabled Persons Parking Bay
- Bicycle Shed
- Designated Smoking Area
- Loop System
- Maternity Room
- Pay and Display Parking
- Designated Care Share
- Outdoor Classroom

A591 FROM GRASMERE

Buses to Windermere train station, Kendal and Lancaster

Buses to Grasmere and Keswick

HEALTH CENTRE

RYDAL ROAD

MAIN ENTRANCE AND EXIT

THE ARMITT MUSEUM