



#LOVEYOURSTORY



University of
CUMBRIA

YOUR STORY STARTS HERE

96%
OF OUR STUDENTS ARE IN
WORK OR STUDY WITHIN 15
MONTHS OF GRADUATING



University of
CUMBRIA

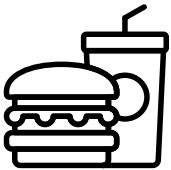
**OPEN DAY PROGRAMME
LANCASTER**

HELLO! LET'S GET YOU CHECKED IN



Registration
10:00- 10:30

Once you have arrived on site, our friendly teams will guide you to the event registration area. Checking in is key to making sure you get your welcome bag, event programme and get your day off to a great start.



A bite to eat and drink

Need a place to stop and refuel, grab some breakfast, a spot of lunch or just a drink? Head to The View Restaurant (map key 14) or Café Martineau (map key 5) where you will find an array of drinks, snacks and meals. You'll also find your complimentary arrival refreshments in The View.



WHAT'S ON TODAY?



Welcome talk

1



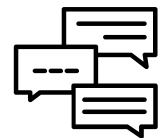
Explore your course

2



Support talks

4



Take a tour

3



Support information fair

5



Course information fair

6

1

WELCOME TALK

10:30 Sentamu Building Lecture Theatre. Pop along to a welcome talk to find out about the Lancaster campus and what makes our University so unique and special.

2

EXPLORE YOUR COURSE

There are multiple ways to find out about our courses, from spending time in the facilities you will be learning in, to attending course talks, hands on interactive sessions and one to one advice.

3

TAKE A TOUR

Our campus and accommodation tours run throughout the day. Led by expert staff and Student Ambassadors, check out our state of the art facilities and the place that our students call home.

4

SUPPORT TALKS

Wondering what applying to Uni involves? Come along to one of our support talks where we will guide you through the process of applying, student finance and much more.

5

SUPPORT INFORMATION FAIR

12:30 - 15:00 The Alexandra Gallery. Our friendly Support Services teams are on hand throughout the day on a one to one drop in basis. Each has their own area where you can ask questions with Admissions, Money Advice, Student Life, Disability and Learning Difficulty support.

6

COURSE INFORMATION FAIR

12:30 - 15:00 The Alexandra Gallery. So you've attended some of our amazing course sessions and have more questions? Head over to our course information fair where our experts are waiting to chat about their courses and answer any more questions that you have.

EXPLORE YOUR COURSE

There are multiple ways to find out about our courses, from spending time in the facilities you will be learning in, to attending course talks, hands on interactive sessions and one to one advice.

BUSINESS

Business Management | Business Management (Digital Marketing) Business Accounting and Finance & International Business Management (2024 entry only) | Business Management (Human Resource Management) (2024 entry only)

11:00	Whether numbers, people, creativity, place or organisation are your passions - business and management has a specialism to suit everyone and can be a path into any sector or industry. Join us for an interactive session considering where you want to go and how the University of Cumbria can help you to get there.	Sentamu Building, Room 213, Map Key 38
-------	--	--

EDUCATION

PGCE Primary

11:00	Discover more about our Primary PGCE and the various routes to gaining your teaching qualification at the University of Cumbria.	Sentamu Building, Room 109, Map Key 38
-------	--	--

EDUCATION

PGCE Secondary

11:00	Discover more about our Secondary PGCE and the various routes to gaining your teaching qualification at the University of Cumbria.	Sentamu Building, Room 110, Map Key 38
-------	--	--

Primary and Early Years Education (3-11) & Primary Education: Inclusion with SEND with QTS (5-11)

11:00	Learn about the ambitious, high quality curriculum you will study and find out how this will be structured. Placements are at the core of your training and you will be shown how these link to your work in university. Current students will be on hand to share their experiences and answer questions about all aspects of studying and other opportunities that are available at the University of Cumbria.	Askwith Building 004 & 005 Map Key 26
-------	--	---------------------------------------

HEALTH

Diagnostic Radiography

11:00	Course talk and introduction to the profession of Radiography as well as the opportunity to experience using our ultrasound simulators and be able to look at our modern X-ray rooms, image intensifiers and mobile X-ray machines.	Sentamu Building, Room 204, Map Key 38
-------	---	--

HEALTH

Nursing (Adult, Children's, Mental Health, and Learning Disability)

11:00	Explore the different Fields of Nursing Practice and the role of the nurse. An introductory talk will give you an insight into the programme, what life is like as a student nurse, career opportunities and routes onto possible further study.	Sentamu Building, Room 203, Map Key 38
-------	--	--

Occupational Therapy

11:00	Have a go at using adaptive equipment, problem solve how to help overcome challenges caused by a disability, take part in a creative activity or learn a new skill. Plus meet our friendly lecturers to find out more about this course and ask any questions you have.	Dalton Building, Room F01/02, Map Key 10
-------	---	--

Paramedic Science

11:00	Introduction to Paramedic Science in the Centre of Excellence in Paramedic Practice	Sentamu Building Lecture Theatre, Map Key 38
-------	---	--

HEALTH & SOCIAL CARE

Children & Young People's Health & Wellbeing (2024 entry only)

11:00	Discover how our course explores real-world social inequalities and health determinants of contemporary practice to prepare you for working across a multi-disciplinary and diverse sector.	Sentamu Building, Room 214, Map Key 38
-------	---	--

HEALTH & SOCIAL CARE

Health & Social Care

11:00	Discover how our course explores real-world social inequalities and health determinants of contemporary practice to prepare you for working across a multi-disciplinary and diverse sector.	Sentamu Building, Room 214, Map Key 38
-------	---	--

SPORT

Sport Coaching and Physical Education

11:00	An introduction to sport degrees and exit routes into a wide range of sport careers. Developing Young People in Sport: What do we need to know? How can performance profiling help our athletes?	Sentamu Building, Room 010, Map Key 38
-------	--	--

Sport Rehabilitation

11:00	An introduction to sport degrees and exit routes into a wide range of sport careers. Get hands on like a Sport Rehabilitator to test out your hamstrings for injury risk, before looking at injury prevention and rehabilitation strategies	Sentamu Building, Room 212, Map Key 38
-------	---	--

Sport Conditioning and Performance Analysis

11:00	Discover the dynamic world of sports conditioning and performance analysis at our upcoming Open Day. Take a peek into our innovative degree programme that will equip you with the skills and knowledge to take on the challenges of this ever-evolving sports industry.	Sentamu Building, Room 010, Map Key 38
-------	--	--



WE'RE HERE FOR YOU

Our range of support talks are designed to give you the information that you need to apply for your course, student finance and much more.

SUPPORTING YOU AT UOC

12:30 or 13:30 Sentamu Building, Room 010, Map Key 38

Duration: 30 minutes

Wondering what support you will receive from the University of Cumbria? Join us to find out more about our Student Union and what our Student Support can offer you throughout your student experience.

We are with you from the first day your journey begins. Helping you with your application, money matters, support with specialist requirements, academic advice and guidance, student life, accommodation and much more.

We are here to help you through all the stages of becoming a student with us, our dedicated team will be with you when ever you need them.

YOUR UCAS APPLICATION

13:30 or 14:30 Sentamu Building, Room 213, Map Key 38

Duration: 30 minutes

Everything that you need to know about applying to University through UCAS, top tips on preparing your personal statement and general advice.



TOURS

CAMPUS TOURS

10:00, 10:30, 11:30, 12:15, 13:00, 13:45, 14:30 - Join your tour point outside the Alexandra Building Gallery (Map Key 1)

Duration: 45 minutes

Get a feel for where you will be studying and find out what makes our Lancaster campus so unique. Our expert staff and Student Ambassadors will take you on a tour of your campus showing you our teaching and study spaces, specialist course facilities and much more.

ACCOMMODATION TOURS

11:45, 12:30, 13:15, 14:00, 14:30 - Join your tour point outside the Alexandra Building Gallery (Map Key 1)

Duration: 30 minutes

Get a feel for where you could be living, by exploring our on-site halls of residence.

PREPARING FOR HEALTH COURSE APPLICATIONS AND INTERVIEWS

13:00 or 14:00 Sentamu Building, Room 214, Map Key 38

Duration: 30 minutes

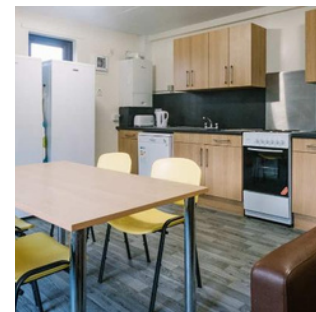
Top tips and expert advice on how to ace your health course application and interview.

PARENTS, CARERS & GUARDIANS Q&A

13:00 Sentamu Building, Room 214, Map Key 38

Duration: 30 minutes

Join our current students and find out what Student Life is really like in Lancaster. This is an opportunity for you to ask questions about our campus, the local community and all the support we offer our students.



DROP INS

SUPPORT INFORMATION FAIR

12:30-15:00 Alexandra Gallery

Our friendly Support Services teams are on hand throughout the day on a one to one drop in basis. Each has their own area where you can ask questions with Admissions, Money Advice, Student Life, Disability and Learning Difficulty support.

COURSE INFORMATION FAIR

12:30-15:00 Alexandra Gallery

So you've attended some of our amazing course sessions and have more questions? Head over to our course information fair where our experts are waiting to chat about their courses and answer any more questions that you have.

STUDENT LIFE Q&A DROP-IN

12:30-15:00 Alexandra Gallery

Meet our current students to find out what a typical day in the life of our students looks like. Get their top tips on settling into University life, the best places to hangout and what they love most about Cumbria!



HEALTH SIMULATION DROP-IN

Drop in between 12:30 - 15:00

Fully immerse yourself in a variety of health environments and scenarios. Our brand new interactive Immersive Rooms combine innovative technology, augmented reality, interactive 3D graphics and audio content to give a creative multi-sensory learning space.

Running on the very latest cutting-edge technology, the Immersive Rooms allow for visual, auditory and sensory immersion, as well as letting students interact with the environments and objects projected onto the walls by simply walking up and touching them.

The space allows student cohorts across the Institute of Health to engage in fully immersive simulations that can take them anywhere – from the home of a 70-year-old dementia patient to the site of a motorway accident – within seconds.

All our scenarios are created in-house and are tailored exactly to the relevant health profession and learning outcomes of each session.



LOVE YOUR INSTITUTE

OUR INSTITUTES

Will your story be one of changing the world? For you, studying at university is about gaining the skills you need to go on and work towards the greater good of society.

Will your story be one of striving for a particular career? For you, your university education needs to catapult you into your dream career, where you stand out against your competitors with an experienced edge.

Will your story be one of pursuing your passion? For you, studying at university is about getting the chance to explore your interests much more. A career will come in the future, but for now it's about the experience and developing yourself. Whatever you want your story to be and whatever your reasons for wanting to study at university, we have hundreds of courses across four specialist institutes, which offer a range of flexible multidisciplinary courses: Institute of Science and Environment; Institute of Health; Institute of Education, Arts & Society; and Institute of Business, Industry and Leadership.

Love your story with them.



Education,
Arts &
Society



Health



Science &
Environment



Business,
Industry &
Leadership

YOUR HOME AT CUMBRIA

Imagine waking up to the smell of coffee brewing and the sound of flatmates chatting. Leave the comfort of your warm, cosy bed and open your curtains to a view of green campus and old heritage stone walls, or the stunning London city skyline, or maybe the rolling Lake District hills.

For first year students, accommodation is at the heart of the university experience, where lifelong friendships are made, culinary inventions are shared, and memories of celebrations are created.

Whichever location you decide, this is your home and your story.



 **AFFORDABLE LIVING**

EN-SUITE AND SHARED FACILITIES 



GREAT LOCATIONS CLOSE TO CAMPUS

YOUR RIGHT TO A QUALITY HOME 

SAFE AND GOOD QUALITY ACCOMMODATION



WADDELL HALL

LOCATION: Lancaster

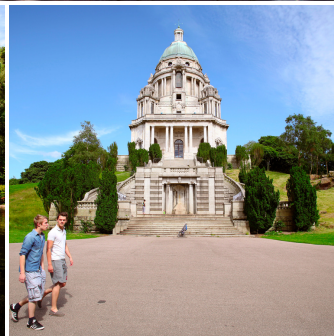
AVAILABILITY: 241 rooms

ROOM TYPE: Mix of en-suite and standard single, with communal kitchen lounges.

STUDENTS PER FLAT: Between 6-7 students, in blocks of 6.

PRICE: Waddell North en-suite £125.00 PW, standard single £96.00 PW.
Waddell South standard single, £82.00 PW.





LOVE YOUR CAMPUS

LANCASTER

Lancaster is the ultimate university city offering the best of all worlds – vibrant city life, cultural heritage, gorgeous countryside and a short bus journey away from the coastal resort of Morecambe Bay. Just an hour from Manchester and two hours from Edinburgh. In between lectures, take in the city's rich history at Lancaster Castle, or wander our cobbled streets, discovering quirky shops and quaint cafes at every turn. Whatever you fancy, we have affordable student eats to suit, from vegan to Vietnamese and, of course, the classic – Nando's!

Our bustling markets bring a whole new excitement to town, with the city centre filling with delicious smells and the sizzling of pans from the street food market. Try a new cuisine at the market and head along the canal with friends for a picturesque walk. And, as the sun sets, Lancaster's diverse student community joins the buzzing nightlife scene of clubs, bars and music venues.

For a break from the bustle of city life, the stunning Lake District is just a stone's throw from our Lancaster campus, with great transport links. Whether you want to get in touch with your adventurous side, canyoning through rock pools and waterfalls, or immerse yourself in nature on a peaceful countryside walk, there's no shortage of new things to try or scenery to enjoy (and snap for sharing on your socials!).

With the perfect balance of city buzz and natural beauty, Lancaster has everything you need to make your university days unforgettable.








FIND OUT MORE

GET IN TOUCH

Let us know how we did and what you thought of your day. Scan the QR code to complete a quick survey. As a thank you for sharing your feedback you will have the opportunity to enter our prize draw for a chance to win an Amazon gift card!



CONTACT US

-  universityofcumbria
-  @cumbriauni
-  @cumbriauni
-  01228 588588
-  enquirycentre@cumbria.ac.uk

CHAT TO A STUDENT, SCAN THE QR CODE BELOW



PLAN YOUR DAY

10:00am

10:30am

11:00am

11:30am

12:00pm

12:30pm

1:00pm

1:30pm

2:00pm

2:30pm

3:00pm

LANCASTER CAMPUS

Address
University of Cumbria,
Bowerham Road,
Lancaster,
LA1 3JD

Telephone
01254 590 800



CAMPUS KEY MAP

- R** Main Reception
- ▶** Building Access
- ♿** Accessible Entrance
- P** Car Park
- ♿P** Designated Disabled Persons Parking Bay
- 🚲** Bicycle Shed
- 🚬** Designated Smoking Area
- 🚰** Loop System
- 👶** Maternity Room
- 🚗** Pay and Display Parking
- 🚗** Designated Care Share
- 🏠** Outdoor Classroom

UNIVERSITY BUILDINGS

- | | |
|---|---|
| 1 Alexandra Building (AXB)
Video Conferencing Facilities | 18 Humanities Building (HB) |
| 4 Bishop Cross Building (BCB) | 19 Ingelton House |
| 5 Café Martineau | 20 Kate Shuttleworth Lecture Theatre (KSLT) |
| 6 Chapel | 21 Library - Harold Bridges |
| 7 College Main
Video Conferencing Facilities | 26 Askwith Building (AB) |
| 8 College North (N) | 28 Print Unit |
| 9 College South (S) | 32 Sport Complex (LSP) |
| 10 Dalton Building (DB) | 34 The Keep (K) |
| 11 Donald Coggan Building (DC) | 35 Waddell Halls |
| 13 Fieldhead (F) | 37 Pre- School Centre |
| 14 Gateway Building | 38 Sentamu Building |
| 17 Hugh Pollard Lecture Theatre (HPLT) | |