

UNDERGRADUATE PROSPECTUS

2027

FOR, IN AND BEYOND CUMBRIA

YOUR FUTURE STARTS HERE

At the University of Cumbria, your story matters – your goals, your passions, and your future. Whatever your dream career, whether you're studying in Ambleside, Barrow, Carlisle, Lancaster, or London, you'll be surrounded by natural beauty, supportive communities, and real opportunities. With strong links to law firms, schools, NHS Trusts, creative agencies, and employers nationwide, we connect your learning directly to your future career.

We're proud to be a Cathedrals Group University, built on values of fairness, inclusion, and personal growth. From achieving your first academic milestone to graduating in the historic Carlisle Cathedral, we're here to support every step of your journey.

Our research-led teaching blends practical skills with the latest technology, preparing you for life beyond graduation. That's why we're the no. 1 university in the North West and top 10 in the UK for graduates into work or further study within 15 months (97% of graduates, HESA 2025).

This prospectus is designed to give you a real sense of life at the University of Cumbria. You're at the start of an incredible journey, and we hope you choose to share your future with us.

NO.1

UNIVERSITY IN THE NORTH
WEST AND IN THE TOP 10
IN THE UK FOR GRADUATES
INTO EMPLOYMENT OR
FURTHER STUDY WITHIN
15 MONTHS (97%)⁺



A SILVER RATED
UNIVERSITY
FOR STUDENT
OUTCOMES^{*}

2ND



MOST AFFORDABLE
UK CITY FOR STUDENT
ACCOMMODATION (CARLISLE)[†]

NO.1

UNIVERSITY IN THE UK
FOR PRODUCING CEOs AND
MANAGING DIRECTORS[°]

2ND



IN THE NORTH WEST
FOR QUALITY EDUCATION[°]



RANKED TOP 41%
OF UNIVERSITIES
WORLDWIDE FOR SOCIAL
AND ECONOMIC IMPACT[°]



CONTENTS

About Us	02
Our Facts and Stats	03
Contents	05
You Asked, We Answered	06
Open Days	09
Connect With Us	10
Hear From Our Students	12
Our Locations	14
Carlisle	16
Lancaster	18
Ambleside	20
Barrow-In-Furness	22
London	24
Your Home at Cumbria (Accommodation)	26
Students' Union	32
Sports, Fitness and Activities	34
The Pears Cumbria School of Medicine	36
Barrow Learning Quarter	38
Student Support	40
Our Courses	46
Types Of Undergraduate Study	48
Qualification Levels	49
Integrated Foundation Years	50
Years in Industry	51
Higher and Degree Apprenticeships	52
Top-up Degrees	54
Course Listings	56-139
Fees and Funding	140
Research Informed Teaching	142
The Small Print	144
Course Directory	146-152
Course Index	153

YOU ASKED, WE ANSWERED

What are the benefits of going to the University of Cumbria?

A degree from Cumbria will boost your earning potential, open doors, and connect you with employers in your chosen career field and world class university partners. You'll gain the knowledge and qualifications valued by top employers, build lifelong friendships, develop transferable skills, and enjoy experiences that will enrich your life for years to come.

Will a degree help me secure my dream career?

We're the no. 1 university in the North West and in the top 10 in the UK for graduate outcomes (HESA 2025), and our alumni have forged successful careers with leading companies both in the UK and around the world! Liverpool FC, Marvel Studios, the NHS, Cumbria Constabulary, BAE, Forestry Commission... the list goes on.

Will my tutors know who I am?

As a student at the University of Cumbria, you'll be part of a close-knit community where you're a name, not just a number. Our academic tutors are experts in their fields who will get to know you and help you to achieve your career goals.

What support will I get at university?

University-level study may come with more freedom than you're used to, but rest assured you'll receive the support you need every step of the way! Our teams are dedicated to helping you both in and outside of the classroom, providing advice on managing your studies, making friends, protecting your health and wellbeing, navigating the cost of living, and so much more.



OPEN DAYS

Picture this: you've just stepped onto campus, and you feel something you've never felt before. You've arrived in a place where you're not just a number – you're welcomed as an individual and encouraged to explore, be curious, and immerse yourself in what could be the next chapter of your story. In that moment, you know this is where you truly belong.

And it all starts at one of our Open Days. We don't rely on gimmicks or sales pitches; instead, we focus on giving you a genuine sense of what life at the University of Cumbria could be like.

Our Open Days offer interactive immersive experiences, including workshops, demonstrations, and tours of our campuses, specialist course facilities, and accommodation options. You'll also have the chance to chat with current students, course tutors, and staff from our Student Support teams, including Money Advice, Admissions, Disability and SpLD, and Accommodation. We want you to experience the University of Cumbria firsthand so you can make an informed decision about your future.

2026 Open Days

6 June – Carlisle Brampton Road

20 June – Carlisle Fusehill Street

26 June – Barrow-in-Furness

27 June – Lancaster

1 July – London

4 July – Ambleside



**SCAN THE QR CODE TO BOOK OR VISIT
CUMBRIA.AC.UK/OPENDAYS**

CONNECT WITH US

We'd love to show you what we have to offer at one of our Open Days, but if you can't visit us in person, there are lots of other ways to discover what life is really like at Cumbria.

OFF-CAMPUS EVENTS

You can find our teams at events around the UK every year. These include UK University Search and UCAS fairs as well as school and college events. Come along to our stands and speak to our expert teams about life at Cumbria. You can also find our international representatives at events around the world.

CHAT TO A STUDENT

Our 'Chat to a Student' tool allows you to talk to our current students and ask any questions you have about starting your story at Cumbria. Ask them what's on your mind and they'll get back to you with their tips and advice.



START AN ONLINE CHAT NOW

FOLLOW US ON OUR SOCIALS

With so much going on at the University of Cumbria, one of the best ways to stay in the know is to follow us on all your favourite social platforms! Learn more about our campus locations, hear what current students have to say about their university experiences, and discover our groups and societies, plus much more.

@ cumbriauni
cumbriauni
University of Cumbria
University of Cumbria
universityofcumbria



BOOK A CAMPUS TOUR

Explore our unique campus locations and modern facilities with a bespoke tour hosted by our current students. This is your chance to discover our realistic work environments, classrooms and public areas, including our on-site canteens, cafés and chapels. Ask all your burning questions and discover what there is for students to see and do in the local area.



BOOK A CAMPUS TOUR

HEAR FROM OUR STUDENTS

Watch
Patience's
story



PATIENCE'S STORY

CHILDREN'S NURSING, BSC (HONS)

Children's Nursing student Patience Frimpong is thriving at the University of Cumbria, where she's developing the skills, knowledge, and confidence to make a real difference in children's healthcare. Her advice to future students is simple: have passion for what you do, as that's what keeps you going and makes the journey worthwhile.

OUR LOCATIONS

SIX CAMPUSES. ONE STORY.

As one of the only UK universities with a campus in a UNESCO World Heritage Site, the University of Cumbria is a truly unique place to live and learn. Across our campuses in the North West and London, you'll find stunning surroundings, vibrant student communities, and endless opportunities to build your career.

Ambleside:

Based in a UNESCO World Heritage site within the natural beauty of a National Park, our Ambleside campus provides exceptional facilities and unrivalled access to the Lake District, creating a unique student experience

Barrow-in-Furness:

Set in the heart of Barrow-in-Furness, our brand new, purpose-built campus is situated in an area with fantastic employer partners to help accelerate careers in manufacturing, engineering, computer science and health. With modern and impressive employer links, it also offers access to world class work placement opportunities for you to apply your learning in real work environments.

Carlisle Brampton Road:

With a rich heritage and well established reputation in arts excellence, and home to a hub of creative and media arts programmes, our Brampton Road campus has a friendly atmosphere and an interesting history. It's the perfect place for you to refine your craft.

Carlisle Fusehill Street:

Our Fusehill Street campus is at the heart of economic growth and opportunity. Only a short 10-minute stroll from the city centre, it blends cutting-edge facilities with a friendly atmosphere—and gives you the chance to explore historic treasures like Hadrian's Wall and Carlisle Castle to enrich your cultural experience!

Lancaster:

Set in beautiful parkland, our Lancaster campus offers expert facilities and a friendly atmosphere. It's only a 15 minute walk from Lancaster's bustling city centre and train station, too!

London:

Our London campus provides the city university experience with all the perks of being on a small campus, including personalised, top-quality learning allowing you to immerse yourself in new and exciting experiences



CARLISLE



Carlisle is a vibrant city with a rich cultural scene and a lively student atmosphere. With great restaurants, welcoming parks, and Instagrammable hidden gems, there's always something to explore. When you're not in the library, browse quirky independent shops, enjoy live music and comedy at the Sands Centre, or take in the historic beauty of Carlisle Castle and Cathedral.



In between lectures, the city offers countless ways to stay active and have fun, from bouldering and swimming to axe throwing, bowling, and escape rooms. Carlisle's cultural calendar is full of exciting events throughout the year. Join fellow students at the Carlisle Beer Festival, enjoy music and comedy at the Old Fire Station, or take part

in student-run events that bring the community together.

With vibrant nightlife, plenty of pubs, cocktail bars, and clubs, Carlisle strikes the perfect balance of entertainment, culture, and countryside—making it the ideal place to make lasting memories during your time at university.



LANCASTER

Lancaster is the ultimate university city, with everything you could ever need right on your doorstep. Take in the rich history at Lancaster Castle, immerse yourself in the local arts scene at the Grand Theatre, or wander the cobbled streets and discover quirky shops and quaint cafés at every turn.

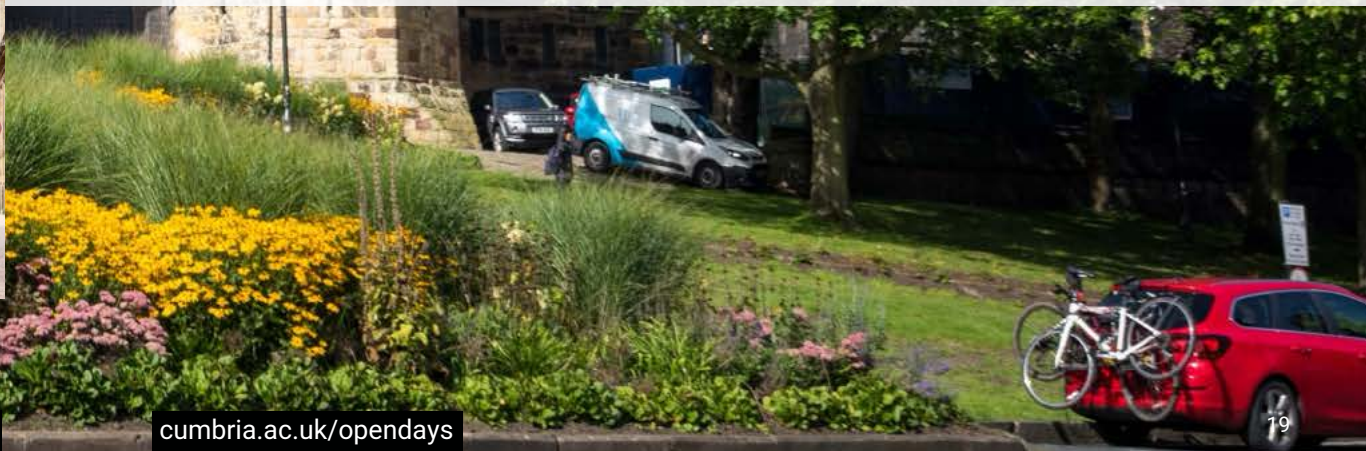
Bustling markets bring a whole new level of excitement to town, with the city centre filling with delicious smells and the sounds of sizzling pans from the street food stalls. After you've sampled a new cuisine, head along the canal or venture to Williamson Park for a picturesque walk. As the sun sets, join the

buzzing student nightlife scene that's made up of numerous clubs, bars, and music venues.

For a break from the bustle of city life, the coastal resort of Morecambe Bay is just a short bus ride away. The stunning Lake District National Park is within easy reach too, so whether you want to get in touch with your adventurous side or immerse

yourself in nature, there's no shortage of new things to try or scenery to enjoy (and snap for sharing on your socials!).

With the perfect balance of city buzz and natural beauty, Lancaster has everything you need to make your university days unforgettable.



AMBLESIDE

As the only UK university with a campus in a UNESCO World Heritage site, our Ambleside campus offers the opportunity to study in one of the UK's most stunning locations: the Lake District National Park. Explore the breathtaking scenery, immerse yourself in the outdoors with hobbies both new and old, and up your social media game with gorgeous shots of fells, picturesque lakes, and all your outdoorsy adventures.



Whether you picture yourself paddleboarding across Windermere, putting your bushcraft skills to the test on a camping trip, or hiking some of the UK's most stunning peaks, you'll truly be living your best student life in Ambleside.

But it's not just about the outdoors. After a day of exploring, you can cosy up in a café with a hot chocolate, enjoy a hearty meal at an inviting

restaurant, or grab drinks with course-mates at one of Ambleside's buzzing bars and pubs. And, for a touch of city life, the lively cities of Lancaster, Carlisle, and Preston are all within easy reach.

Join us in Ambleside for a truly unique student experience, where you'll be surrounded by unbeatable natural beauty and endless opportunities for adventure.

BARROW-IN-FURNESS

How does hitting the beach after a day of lectures sound? Barrow-in-Furness is a historic coastal town with miles of spectacular coastline and plenty of heritage to explore. Gather your new friends and enjoy sea views along the Walney Coastal Path, where you'll find beaches, rugged dunes, and peaceful salt marshes.

But Barrow isn't just about beautiful scenery. Settle in with a coffee at one of the town's quirky cafés while you go over your lecture notes, blow off steam at a local gym, or enjoy live music, theatre, and comedy at friendly community venues.



And when you're ready for a bigger adventure, the Lake District National Park is right on your doorstep—perfect for hiking, paddle-boarding, or simply taking in views you'll want to remember forever.

With its welcoming community, stunning coastline, and relaxed social scene, Barrow offers a university experience that's easy to settle into and hard to forget.

LONDON



We bring a touch of Cumbrian charm to the capital with our East London campus, which offers a cosy campus experience amidst all the hustle and bustle. Going to university is all about expanding your horizons and immersing yourself in new and exciting experiences, and where better to do that than one of the world's most dynamic cities?



Our campus is located in a diverse, multicultural area with excellent access to the rest of East London and the city. Around campus, there's a scattering of great local cafés, a traditional Victorian market, and stunning views of the London skyline.

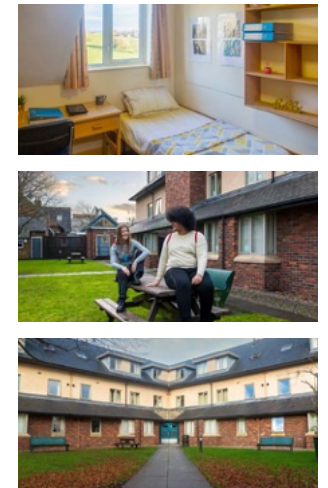
With towering skyscrapers, impressive waterways, and over 300 shops, bars, and eateries, there will always be something exciting to see and do just around the corner from your lectures. Our welcoming campus environment in the heart of East London will make you feel at home in the capital.



YOUR HOME AT CUMBRIA

For many students, living in halls is an integral part of the university experience. If you are moving away from home for the first time, our halls provide a safe environment for you to live, study, and socialise.

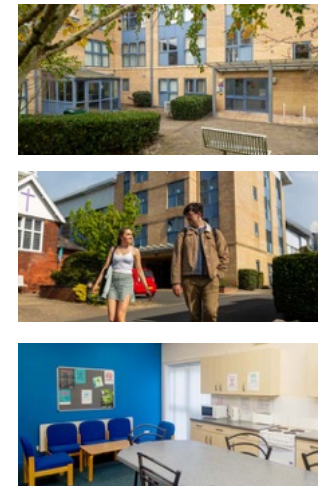
The university provides a range of campus accommodation to cater for all budgets, offering excellent value for money across a range of room type options, so we're sure you'll find your home-from-home at Cumbria.



BRAMPTON ROAD HALLS

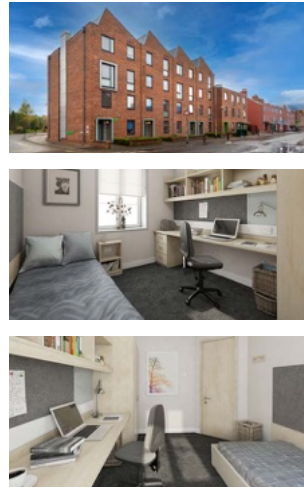
LOCATION: Brampton Road, Carlisle **AVAILABILITY:** 112 bedrooms **ROOM TYPE:** 36 en-suite bedrooms and 76 standard single bedrooms **STUDENTS PER FLAT:** 5-7 students

PRICE: Standard single £95.00 PW, en-suite £135.00 PW



CARROCK HALL

LOCATION: Fusehill Street, Carlisle **AVAILABILITY:** 85 bedrooms **ROOM TYPE:** En-suite bedrooms **STUDENTS PER FLAT:** 5-7 students **PRICE:** £146.00 PW

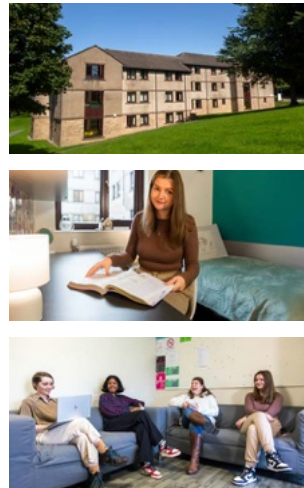


DENTON HOLME

LOCATION: Norfolk Street, Carlisle **AVAILABILITY:** 249 rooms within 25 townhouses

ROOM TYPE: Fully furnished en-suite and standard rooms with 3/4 beds

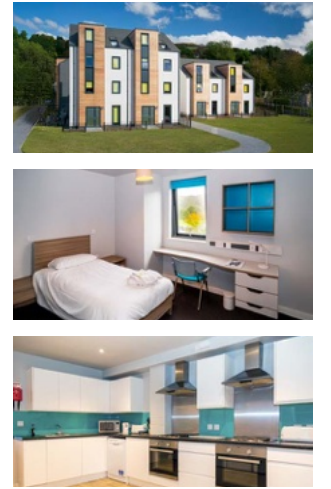
PRICE: £136.02 PW *Denton Holme is a nominated partner of the University of Cumbria.



WADDELL HALLS

LOCATION: Lancaster **AVAILABILITY:** 241 rooms **ROOM TYPE:** Mix of en-suite and standard single, with communal kitchen lounges **STUDENTS PER FLAT:** Between 6-7 students, in blocks of 6

PRICE: Standard single £108.00 PW, en-suite £146.00 PW



FELL COURT

LOCATION: Rydal Road, Ambleside **AVAILABILITY:** 71 bedrooms, split across 7 townhouses

ROOM TYPE: En-suite, open plan kitchen dining and lounge **STUDENTS PER FLAT:** 8-11 students

PRICE: £153.00 PW



FAIRFIELD HALLS

LOCATION: Rydal Road, Ambleside **AVAILABILITY:** 40 bedrooms

ROOM TYPE: En-suite, communal kitchen spaces per floor, with social lounge/common room on the ground floor. **STUDENTS PER FLAT:** 10 students **PRICE:** £146.00 PW



HELVELLYN HALLS

LOCATION: Rydal Road, Ambleside **AVAILABILITY:** 20 bedrooms

ROOM TYPE: Mix of standard and large single, spread across 3 floors

PRICE: Standard single £108.00 PW, large single £122.00 PW

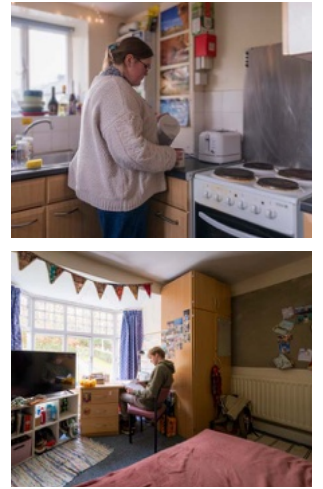


THE COTTAGES

LOCATION: Nook Lane, Ambleside **AVAILABILITY:** 4–5 bedrooms

ROOM TYPE: Self-catered standard and large single rooms, with both a front garden and a rear yard

PRICE: Standard single £108.00 PW, large single £122.00 PW



WANSFELL HALL

LOCATION: Rydal Road, Ambleside **AVAILABILITY:** 11 bedrooms

ROOM TYPE: Mix of standard and large single, with communal kitchens and dining areas, also with access to the social lounge based in Fairfield Hall

PRICE: Standard single £108.00 PW, large single £122.00 PW



LONDON STUDENTPAD

We advertise local accommodation through London Studentpad, the student accommodation search engine. Studentpad lets you search for student houses, flats and lodgings in London and the UK.



BARROW

We work with local accommodation providers to source good-quality, affordable housing for students studying in Barrow-in-Furness. These options are advertised through our Accommodation Portal at cumbriastudentpad.co.uk.

*Please note: The prices listed here are for 2026/2027 and could be subject to change.

UCSU STUDENTS' UNION



Hello! We are the University of Cumbria Students' Union (UCSU), and it's our mission to represent and support you in any way that we can. We're a charity set up by and for students, and we work independently with the university. We'll help you to develop and achieve your dreams, collaborating with our partners to deliver the best possible student experience during your time at the University of Cumbria.

We are headed up by an Executive Committee, which is led by three full-time Student Officers as well as Campus Reps, all of whom are elected by you each year. This team is responsible for representing your voice at the highest levels of the university, helping to bring about any changes that you raise and celebrating the successes of our amazing student body.

Societies and Groups

We have a wide range of societies that cover everything from midwifery to paddle boarding, criminology to zoology. Such student-led groups are here to help you continue a hobby you already love, discover a new pastime, or just meet like-minded people. If something you want to do doesn't already exist, we'll help you set it up.

Events

Events are offered both through UCSU and our Student Groups and include club nights, festivals, city events, volunteering fairs, workshops, training courses, and more. We aim to provide events and opportunities that everyone across the university community will enjoy. Scan the QR code to view our upcoming events.



Nursing Society



Women's Hockey



Mountaineering Society



Christian Union



Wildlife Society



Paramedic Society

SPORTS, FITNESS AND ACTIVITIES

SPORT AND ACTIVITIES

To support students to positively manage their health and wellbeing, we encourage all our students to have a healthy balance of work and play. Physical activity can help boost self-esteem, mood, sleep quality, and energy, so read on to find out what you can do to keep fit and active during your time at university.

UoC Active offers a variety of facilities and services at our Ambleside, Carlisle, and Lancaster campus locations, catering for a wide range of activities through UoC Active Play. Our facilities also have air-conditioned fitness suites, with year-round class timetables offering Pilates, bootcamps, yoga, and strength and cardio sessions. Our Lancaster campus also has grass football and floodlit artificial turf pitches.

As well as affordable campus memberships, we offer great deals on premium membership packages, which include access to our partner facilities at Salt Ayre Leisure Centre in Lancaster and Better Leisure facilities in Cumbria (including Carlisle and Ulverston). UoC Active is also part of the BUCS UNiversal Scheme, which allows our student members to access fitness facilities at other BUCS UNiversal universities across the country.

GROUPS AND SOCIETIES

Through our Students' Union, we have a range of groups available to our students, including Women's Hockey, Men's Football, Mountaineering, the Christian Union, the African and Caribbean Society, and more. At each of our campus locations, we can also help you find groups and societies which are available to the wider community outside of the university. SU Sports teams also have the opportunity to take part in BUCS leagues. Or why not kick start a new society of your own!

GREAT OUTDOORS

You are spoilt for choice when it comes to outdoor pursuits by the huge range of opportunities available on your doorstep, including fell running, mountain biking and sailing. Our Ambleside campus is set in the heart of the Lake District, a UNESCO World Heritage site, meaning our students have easy access to the best adventure playground. Our Carlisle campus is also not far away from another UNESCO World Heritage site - Hadrian's Wall. So if you feel you have the stamina, you can walk along part of the 73 mile historical stretch!



THE PEARS CUMBRIA SCHOOL OF MEDICINE

Study medicine at a collaborative and inclusive medical school embedded in the communities of Cumbria.

If you're a Bioscience or Allied Healthcare graduate (eligibility criteria applies), then you can apply for The Pears Cumbria School of Medicine's Graduate Entry Medicine programme. The programme focuses on training doctors in Cumbria, for Cumbria.

A unique partnership between Imperial College London and the University of Cumbria, the Pears Cumbria School of Medicine (PCSM) opened to students in 2025, combining the University of Cumbria's expertise in the education of nurses, midwives, and allied health professionals with Imperial's reputation as one of the world's best medical schools.

Based in Fusehill Street, Carlisle, students will get a comprehensive experience of medicine across Cumbria and undertake placements throughout the region to gain experience of practising medicine in a wide range of hospital and community settings.

The programme has been created with regional NHS partners to train compassionate, adaptable and innovative doctors who can meet the needs of residents in Cumbria and the North West.

Students will graduate with an MBBS from Imperial College London, one of the leading medical schools in the world, all whilst studying in Cumbria.

Find out more at www.cumbriamed.ac.uk



**The Pears Cumbria
School of Medicine**

A partnership between

IMPERIAL



More
Information



BARROW CAMPUS

“BARROW-IN-FURNESS HAS AN IMPORTANT ROLE IN THE NATION'S DEFENCE AND ENERGY INFRASTRUCTURE AND AS CUMBRIA'S UNIVERSITY WE, WITH OUR EXISTING PARTNERS INCLUDING BAE SYSTEMS, ARE WELL PLACED TO SUPPORT THIS BY GROWING BARROW'S BROADER SKILLS, PRODUCTIVITY, AND ECONOMIC LANDSCAPE. WE WILL BE CREATING OPPORTUNITIES BY PROVIDING NEW, INCLUSIVE, AND ACCESSIBLE PROGRAMMES OF STUDY AND PROGRESSION ROUTES THROUGH TO HIGHER EDUCATION, ALL OF WHICH WILL IMPACT ON PLACE AND PEOPLE FOR GENERATIONS TO COME.”

University of Cumbria Deputy Vice Chancellor, Professor Brian Webster-Henderson OBE

cumbria.ac.uk/applynow

SHAPING THE FUTURE OF BARROW

Aligned with our Towards 2030 strategy, we are committed to becoming a university for Barrow, supporting local people, businesses and communities to thrive. Our campus, which welcomed its first students in 2025, offers degree programmes in Mechanical Engineering, Computer Science and Adult Nursing.

Developed in partnership with organisations including BAE Systems, Furness College, Westmorland and Furness Council and others, the campus reflects our close collaboration with local employers. Together, we design programmes that meet regional skills needs, open brighter futures and help attract and retain talent. As the largest of the government-backed Brilliant Barrow projects, the campus forms a key part of collective investment in the area's long-term future.

Alongside our partners, we share a bold ambition to revitalise Barrow and the wider Furness region, creating a place where people choose to live, work and thrive.

CARLISLE CITADELS CAMPUS

Our latest transformational project will see the construction of an exciting new home for teaching, creativity and business interaction in the heart of Carlisle. Positioned at a gateway location to the city, our new location will boost the vibrancy and vitality of both the city and the wider region, providing accessible, flexible, and digitally advanced teaching and academic facilities. The development will feature state-of-the-art teaching and group study areas, alongside inspiring library and social spaces designed to bring students and staff together.



cumbria.ac.uk/opensdays



STUDENT SUPPORT

MEET THE STUDENT SERVICES TEAM HERE AT CUMBRIA!

Coming to university is such an exciting time, but we know it's also a big leap and that you may need some support with your academic skills, health and wellbeing, money management, and more. We are here to provide you with a wide range of high-quality support services to maximise your potential for success whilst you are studying with us.

We are made up of several different teams to ensure that we meet all our students' support needs. Through our ethos of "Live Well Learn Well", we recognise that to thrive and progress academically, students need to be well supported across both their academic and non-academic pursuits.

Visit cumbria.ac.uk/student-support to find out more.

Academic Skills Support

University-level study can seem daunting, but we understand the challenges and are here to help you navigate them. Our support offer begins before you even start your course — our Head Start academic skills courses will develop your confidence and ease you into your studies in no time!

Our Skills@Cumbria team works with your tutors to make sure you've got the reading lists and resources needed for your course. Our wide range

of online resources is supplemented by timetabled workshops, webinars, and group or 1-to-1 support sessions that cover literature searches, referencing, academic writing, and more.

Throughout the year, our Skills@Cumbria and Mental Health and Wellbeing teams also run a joint workshop on Managing Academic Stress and Anxiety. So rest assured you'll be in safe hands whilst studying at the University of Cumbria.

STUDENT SUPPORT



Health and Wellbeing

The Mental Health and Wellbeing Team is committed to providing mental health support for all students. We are here to help you get the most out of your university experience, whatever your circumstances may be.

Our team is made up of mental health professionals who can support you with a range of mental, emotional, and interpersonal issues.

A variety of support services are available, including talking therapy, therapeutic groups, self-help tools, and workshops. Whatever your concern, we're here to help, so please don't hesitate to reach out.

Inclusion and Disability Support

The University of Cumbria is committed to supporting disabled students so they can participate in their programmes of study. To help us do this, we would encourage you to declare your disability or Specific Learning Difference as early as possible; for example, during the admissions process, so that we can support you from the outset of your application.

Our specialist Disability Support teams can work with you to establish your reasonable adjustment support needs, discuss any additional funding you may be eligible for, such as the Disabled Students' Allowance, and develop your Learning Support Plan.

Making Friends

We know that socialising is key to the university experience, and to your mental health. That's why we've created welcoming campus environments, complete with friendly student communities and inclusive societies and events. From Welcome Week to year-round Students' Union events and society meet-ups, there are plenty of opportunities to meet like-minded people and forge lasting friendships at the University of Cumbria.

Healthy Relationships Hub

The University of Cumbria's values articulate our commitment to mutual respect and understanding, placing an emphasis on underpinning all our practices with trust and honesty. The University of Cumbria's Healthy Relationships Hub is our dedicated Harassment and Sexual Misconduct information hub, serving as a central, accessible resource for all relevant policies, procedures, and support pathways.

Here, you can make a report or seek information about sexual misconduct, harassment (physical or online), bullying, hate crimes, hate incidents, domestic abuse, and spiking, as well as find guidance on what to do if you need support. These pages clearly outline our stance on harassment and sexual misconduct, provide guidance on reporting and investigations, and include information on staff-student relationships. They are designed to be easy to navigate and understand. Through this resource, we demonstrate our proactive commitment to preventing and responding to harassment and sexual misconduct within our university community.

Visit our Healthy Relationships Hub at my.cumbria.ac.uk/Student-Life/Healthy-Relationships-Hub/

STUDENT SUPPORT

Your Career Starts Now

Your career doesn't start after you graduate, it begins the moment you become a student at Cumbria. We'll equip you with the skills, experience and competitive edge needed to succeed in the jobs market.

97% of our graduates are in employment or further study within 15 months of graduating, which means you'll be joining the no.1 university in the North West and in the top 10 in the UK for graduate prospects (HESA Graduate Outcomes 2025). Your future outlook is bright beyond your studies with us.

Library Services

Supporting your learning with access to thousands of books, journals, and electronic resource collections, our libraries provide a complete range of services and support to enhance your academic and study skills.

Our campus libraries are friendly, welcoming, and safe spaces for you to use and enjoy. Our supportive Skills@Cumbria team offers appointments, workshops, webinars, online resources, and videos on a wide range of topics, including referencing, searching skills, academic writing, and more.

We regularly increase our library resources, working with lecturers to provide the essential reading lists you need for your modules. We also encourage you to recommend books for the library to purchase for our collections as part of our 'Get More Books' and 'Reading for You' schemes.

Supporting You After You Graduate

At Cumbria, our support does not end when we hand over your graduation certificate. For three years after you graduate, you'll continue to have access to all our careers services. In addition, you'll join the Cumbria Network (our central alumni hub), which gives you access to fantastic networking and mentoring opportunities.

Financial Support

We offer a range of grants, scholarships, and bursaries to support students from low-income households. If you experience delayed funding, unexpected financial emergencies, or financial difficulty during your course, the University of Cumbria Student Support Fund is available to help you. Our Students' Union can lend a hand too, with food pantries located on campus, and cost of living vouchers available.

Chaplaincy

The Chaplaincy team works within the ethos of a Cathedrals Group University to support and encourage staff and students on their journeys through life. Chapels on our Fusehill Street and Lancaster campuses are places of welcome and sanctuary, offering quiet, comforting spaces to all regardless of belief. Regular times of prayer, exploration of faith, and meditation are offered as well as spaces for conversation and listening. These can be accessed on campus or online.

Key Christian festivals and those of other faiths are acknowledged and supported, and students are encouraged to take time during their studies to reflect on what makes a good life and to pursue a spirituality that will help them flourish and build good relationships with themselves and others.

Enriching Your Career Skills Alongside Your Studies

In addition to the amazing placements, partnership opportunities, and accreditations that our courses offer (which you can find out about on our course pages), you'll also have access to 'My Career Enriched', our online careers hub. This offers:

- Access to graduate jobs, part-time work, work experience, industry placements, and paid internships.
- One-to-one advice, guidance appointments, and practice interviews.
- Careers fairs, networking, and employability events.
- Tailored feedback on your CV, cover letters, and application forms.
- Mini online career pathways to develop your employability skills.
- A wealth of information through our Career Discovery Feed.
- Practical workshops on CVs, applications, interviews, success in your chosen sector, options with your degree, job search skills, starting your own business, becoming a freelancer, and more.
- Business start-up advice and developing entrepreneurship skills.
- Information for disabled students on how to declare a disability, applying for work, communicating strengths, and requesting adjustments in the recruitment process.
- Our Career Ahead Employability Award, which helps you put all your skills into practice.

OUR COURSES

Our undergraduate courses are usually three years of full-time study; however, we also offer top-up degrees for those who already hold a Higher National Diploma (HND) or Foundation Degree. You can also choose an alternative pathway into degree-level study through our Integrated Foundation Year courses, which typically involve four years of full-time study to achieve an undergraduate qualification. In addition, we offer degree apprenticeships that support a variety of employers in upskilling their workforces.

You'll find full course information, including accreditations, modules and entry requirements, on our website: cumbria.ac.uk/courses. If you require any guidance with your university and course search, our Course Enquiries Team are here to help.

They can provide advice on:

- Finding the right course for you based on your qualifications, experience, and interests
- Perfecting your university application
- Preparing your admissions interview or prepping your arts portfolio
- Understanding your funding options, including student finance, scholarships, and bursaries

Contact our Course Enquiries Team on 01228 588 588 or send an email to enquirycentre@cumbria.ac.uk

The following pages will give you a flavour of the courses we offer. Please see the Course Directory at the back for an in-depth list of available courses and entry requirements.

What does it mean if a course is subject to validation?

Where new courses are awaiting formal approval, they are advertised as 'subject to validation'. In these cases, specific details of the course may not yet be available. As soon as the course is validated, full details are provided through the course webpages.



UCAS DEADLINES FOR APPLICATIONS

April/May 2026 – The UCAS search tool displays 2027 courses. The adviser portal also opens for 2027 entry.

May 2026 – Registration for 2027 undergraduate applications goes live on UCAS.

September 2026 – The application window for 2027 entry opens. Completed undergraduate applications can be submitted to UCAS via the UCAS Hub.

October 2026 – The deadline for applications to Oxford, Cambridge and most courses in medicine, dentistry, and veterinary medicine/science.

January 2027 – The UCAS Equal Consideration Deadline for the majority of undergraduate courses. Applications can still be sent after this, but providers cannot guarantee they'll give it equal consideration.

February 2027 – UCAS Extra opens. If you find yourself without any offers on your original UCAS application, or you decide to turn down the offers you do receive, you will be able to add another choice using UCAS Extra.

July 2027 – Clearing opens. If you don't receive any offers or you want to explore other universities and courses, you can search for vacancies in Clearing.

Note: Specific dates are unavailable at the time of printing. Please see the UCAS website for the most up-to-date information.

TYPES OF UNDERGRADUATE STUDY

THERE’S A VARIETY OF UNDERGRADUATE COURSES AVAILABLE AT CUMBRIA, PROVIDING FLEXIBLE STUDY OPTIONS AND ASSISTING YOUR JOURNEY INTO UNIVERSITY.

Bachelor (Honours) Degree

These degrees usually take three years to complete, and depending on your subject of interest, you will be awarded one of the following:

- Bachelor of Arts – BA (Hons)
- Bachelor of Engineering – BEng (Hons)
- Bachelor of Law – LLB
- Bachelor of Science – BSc (Hons)

Foundation and Top-Up Courses

Our Foundation degree courses (FdA or FdSc) are studied over two years on a full-time basis and are usually linked to a specific professional career. This type of course can be topped up to a full BA (Hons) or BSc (Hons) degree via a top-up course.

Our top-up courses allow you to top up your foundation qualification to a full degree by completing a further year of full-time study. These courses help students who have already completed a Foundation degree, a HND or a DipHE course to gain their full Honours degree qualification.

See page 54 to learn more about our top-up degrees.

QUALIFICATION LEVELS

8	Doctorate PhD, DBA				
7	Master's Degree MA, MSc, MPhil			Higher Apprenticeships	Degree Apprenticeships
6					
5	Undergraduate Degree BA, BSc, LLB, BEng	Diploma of Higher Education DipHE	Higher National Diploma HND		Foundation Degree FdA, FdSc
4		Certificate of Higher Education Cert HE	Higher National Certificate HNC		
3	A Levels / Integrated Foundation Year	BTEC Level 3 Nationals / T Levels / V Levels		Advanced Apprenticeships	International Baccalaureate IB



INTEGRATED FOUNDATION YEARS

Laying the foundation for your dream career

Integrated Foundation Year (IFY) courses are a distinctive, inclusive and high-quality route into higher education, offering structured learning, tailored support, and a strong sense of belonging from day one. Incorporating an introductory year at the beginning of a full degree, they are designed to develop your subject specific skills and build your confidence in university-level study. At Cumbria, we offer a range of Integrated Foundation Years in areas such as Business, Health, Science and the Arts, so we're bound to have a course that matches your career ambition.

Who are Integrated Foundation Years for?

If you don't meet the entry requirements for a particular course, you don't feel ready to begin a three-year Honours degree, or you're returning to education after a break, then the Integrated Foundation Year route could be for you.

As well as developing essential academic skills such as independent study, writing, communication, and problem-solving, this extra year is a transformational springboard to success through level 4 and beyond, allowing you to adjust to campus and university life so you feel more prepared going into the first year of your degree. You'll also have the opportunity to get to know the people you'll be studying with and benefit from tailored support from your course team.

Learn more: www.cumbria.ac.uk/study/courses/foundation-courses/

Course Key:

▲ Integrated Foundation Year (IFY) Available

cumbria.ac.uk/applynow

YEARS IN INDUSTRY

Apply your learning to the real world

A Year in Industry (also referred to as a Sandwich Placement) is a unique opportunity to gain hands-on experience in the workplace. If you're accepted onto one of our Year in Industry courses, you'll have the option of spending the third year of your degree on placement with an employer or organisation relevant to your field. Depending on the course you study, you might even have the chance to secure a work opportunity abroad.

Designed to develop your professional skills and build on the knowledge you've gained in your first two years at university, a Year in Industry is a valuable experience and can improve your chances of success when applying for graduate jobs.

We will support you in finding and applying for opportunities with relevant employers and organisations.

Benefits of a Year in Industry

- Develop the key employability skills graduate employers are looking for
- Gain an understanding of workplace culture and discipline
- Take on real responsibility and increase your confidence
- Expand your professional network
- Get industry insights and explore potential career options
- Learn from experienced professionals
- Apply your theoretical knowledge to real-world situations

Course Key:

- Sandwich Placement/ Year in Industry Available
- + Available With Placement

cumbria.ac.uk/opendays



HIGHER AND DEGREE APPRENTICESHIPS

Enjoy the best of both worlds with a degree apprenticeship, which is a unique type of programme that combines full-time paid work with university-level study.

At the University of Cumbria, apprenticeships are available at foundation, undergraduate, and postgraduate level. Whether you're hoping to train for your dream career or want to upskill in your current role, there will be an opportunity that is right for you.

As a degree apprentice with the University of Cumbria, you will:

- Graduate with no student debt – your tuition fees are paid in full by your employer and the government.
- Be paid a full-time salary – you will earn while you learn! Enjoy all the benefits of being a full-time employee and get paid time off to study and attend classes.
- Get a full foundation, bachelor's or postgraduate degree upon graduation. Like our students who follow the traditional route, you'll also graduate at Carlisle Cathedral.
- Graduate with quality work experience, giving you a competitive edge – our employer partners include some of the UK's most prestigious organisations as well as high-quality small and medium enterprises.
- Join one of the largest degree apprenticeship providers with over 2,800 apprentices that are employed by 500 employers across the UK.
- Gain full access to our fantastic campus services, including a wealth of support through our online platforms.

BAE SYSTEMS

Sellafield Ltd

KBR

NHS

Thames Water



We are a key provider of apprenticeships to the public and private sectors, working hard to ensure all apprentices are supported to succeed.

Apply directly with any employers advertising an apprenticeship position, or you can apply online via www.gov.uk



SCAN TO APPLY



LEARN MORE ABOUT APPRENTICESHIPS

If you already have a job, you can also encourage your employer to take you on as an apprentice.

TOP-UP DEGREES

TAKE YOUR EXISTING QUALIFICATION TO THE NEXT LEVEL WITH A TOP-UP DEGREE FROM THE UNIVERSITY OF CUMBRIA.

If you've already completed a Foundation Degree or Higher National Diploma (HND), a top-up degree allows you to convert your current qualification into a full undergraduate degree with just one or two years of study. It's a smart, flexible route designed to help you achieve more without starting from scratch.

Why choose a top-up degree?

- Fast-track your success: Gain a full Bachelor's degree (BA or BSc) in as little as one year – a top-up degree typically mirrors the final year of an undergraduate course, saving time and reducing tuition costs.
- Build on your existing knowledge: Deepen your knowledge and understanding of your subject and strengthen your professional skills. Many top-up degrees combine academic learning with practical, career-focused study, helping you apply theory to real-world scenarios and develop the expertise employers are looking for.
- Validate your experience: A top-up degree recognises the value of your previous learning, converting your expertise into a recognised qualification and giving you credit for the knowledge you've already earned.
- Enhance your career prospects: A full Bachelor's degree demonstrates your commitment and capability, helping you stand out in a competitive job market and opening doors to postgraduate study.



OUR TOP-UP DEGREES

BSc (Hons) Applied Chemistry

BA (Hons) Business Management*

BA (Hons) Education Studies

BA (Hons) Education Studies with Early Years

BSc (Hons) Forestry

BA (Hons) Global Business Management

BA (Hons) International Business Management*

BSc (Hons) Project Management

BSc (Hons) Sport and Exercise Therapy

BA (Hons) Sport Coaching and Physical Education

BA (Hons) Tourism and Visitor Economy Management*

(*subject to validation)

Scan the QR code to find out more about our top-up degrees, including entry requirements, course structure, and how to apply.



ENGINEERING



VIEW COURSES

FUTURE TALENT AWARD

Receive up to an £8,000 Bursary,
12 Week Paid Placement,
and more.



FIND OUT MORE

MECHANICAL ENGINEERING

BENG (HONS)

- + Available With Year in Industry
- ▲ Integrated Foundation Year (IFY) Available

Gain the knowledge, creativity and problem-solving skills to make an impact designing cutting-edge technologies and tackling real-world challenges. Our BEng (Hons) Mechanical Engineering degree is an exciting and forward-looking course that combines technical expertise with practical application. Our exclusive Future Talent Award offers paid placements and a guaranteed interview, giving you a head start in your engineering career.

You will explore mechanics, materials science, and thermodynamics, as well as core themes in fluid mechanics, control systems, and advanced manufacturing techniques. The course also includes training in computer-aided design (CAD) and cutting-edge manufacturing technologies like 3D printing and robotics.

Developed in close collaboration with our partner BAE Systems, our Mechanical Engineering degree is designed to make you industry ready. You'll learn from both academics and practising engineers, applying theory to real-world projects and gaining insights directly from professionals working at the forefront of engineering innovation.

Our Mechanical Engineering course is taught at our brand new Barrow campus, a purpose-built facility equipped with the latest resources and technology.

DURATION	LOCATION	UCAS POINTS	UCAS CODE	ADDITIONAL ENTRY REQUIREMENTS	PARTNER
3 years	Barrow	104–120	B117	To include 32 points from one of; Design and Technology, Maths, Further Maths, Statistics, Physics, Chemistry, Computer Science or Electronics. It would be advantageous to have studied two of these subjects. GCSE Maths, English and Science (or STEM) at grade C/4 or above. Functional Skills English and Maths are also accepted. We accept a full range of qualifications that carry UCAS points, including A-levels, BTECs and T-levels.	BAE Systems

MODULE EXAMPLES

- Mechatronic Principles (Electrical)
- Mechatronic Principles (Mechanical)
- Digital Manufacture
- Integrated Engineering 2
- Advanced Materials and Manufacturing
- Advanced Instrumentation and Control

AFTER THIS COURSE YOU COULD...

Upon successful completion, you will be qualified to pursue careers in areas such as:

- Aerospace
- Automotive
- Chemical
- Construction
- Medicine
- Manufacturing
- Sport
- Defence
- Consumer goods
- Engineering marketing/sales



FUTURE TALENT AWARD

Receive up to an £8,000 Bursary, 12 Week Paid Placement, and more.

FIND OUT MORE

BUSINESS



VIEW COURSES



TAYLER-J BUSINESS MANAGEMENT, BSC (HONS)

I am driven by the idea of running my own business and working alongside other organisations to achieve success. That's why I chose Business Management at Cumbria – to put myself in the best possible position to make the most of opportunities to build connections in the industry.

cumbria.ac.uk/applynow

cumbria.ac.uk/opendays

Memberships,
Accreditations
and Partners



ACCOUNTING AND FINANCE*

BSC (HONS)

* subject to validation

▲ Integrated Foundation Year (IFY) Available

Developed in collaboration with employers, this degree responds directly to the growing demand for qualified accountants and finance professionals across Cumbria, the North West, and beyond. You'll gain practical, career-ready experience alongside a strong academic foundation, helping you stand out in a competitive global market.

Our course offers a flexible learning pathway with two study routes. The Association of Chartered Certified Accountants (ACCA)-aligned route enables you to complete formal ACCA-style examinations, supporting your progression towards professional qualification. The non-ACCA route provides alternative assessments if you're seeking broader business-focused career opportunities.

You'll study a balanced portfolio covering financial and management accounting, law, auditing, taxation, and strategic finance, giving you a comprehensive understanding of how organisations operate and make financial decisions. Alongside these technical areas, you'll build digital accounting capability using leading software such as Xero, Sage, and QuickBooks, and access live company data through databases such as Orbis to support financial analysis and decision-making.

The course integrates employer-led projects, mentoring, and compulsory industry placements developed with regional firms—ensuring you graduate workplace-ready, digitally competent, and prepared for professional progression.

INDICATIVE MODULE CONTENT

- Business Environment
- Finance Management and Corporate Governance
- Financial Management and Performance Management
- Financial Reporting and Taxation
- Economics, Governance, and Sustainable Futures
- Personal and Professional Skills Development
- Principles of Marketing
- Personal and Professional Development
- Business Analytics and Visualisation with Artificial Intelligence

AFTER THIS COURSE YOU COULD...

This course opens doors to a wide range of graduate roles in Accounting, Auditing, Financial Analysis, and Taxation.

DURATION	LOCATION	UCAS POINTS	UCAS CODE	ADDITIONAL ENTRY REQUIREMENTS	ACCREDITATIONS
3 years	Carlisle	104–112	N440	GCSE English and Maths at grade 4/C or above	Association of Chartered Certified Accountants* Chartered Institute of Management Accountants* *Accreditation in progress

ARTIFICIAL INTELLIGENCE AND BUSINESS ANALYTICS*

BSC (HONS)

* subject to validation

▲ Integrated Foundation Year (IFY) Available

Fascinated by the potential of Artificial Intelligence (AI)? Our BSc (Hons) Artificial Intelligence and Business Analytics course combines AI with strategic business insights, preparing you for success in the data-driven global economy.

This degree blends computing, business, and professional development to equip you with skills to solve complex problems and make informed decisions in dynamic environments. You'll gain a strong foundation in business fundamentals, including marketing insights, consumer behaviour, management accounting, and finance.

You'll also develop expertise in AI and data analytics, exploring AI foundations, machine learning, prompt engineering, and applying AI in business contexts. Alongside this, you'll build technical skills in programming, data visualisation, and business analytics using AI tools and platforms.

Professional and enterprise development is embedded throughout, giving you opportunities to strengthen leadership and innovation skills. Operational excellence modules in project, operations, and strategic management prepare you to drive performance and efficiency within organisations.

You will also undertake a structured work placement and a final-year business project, so that you apply learning in real-world contexts, enhancing your employability and professional confidence.

INDICATIVE MODULE CONTENT

- Computer Programming
- AI and Machine Learning
- Artificial Intelligence
- AI Applications in Business
- AI Applications in Business and Prompt Engineering
- Contemporary AI Development in Business
- Business Environment
- Personal and Professional Skills Development
- Business Analytics and Visualisation with Artificial Intelligence
- Project Management and Operation Management

AFTER THIS COURSE YOU COULD...

This course opens doors to a wide range of graduate roles. Career opportunities include Business Intelligence Analyst, AI Consultant, Data Analyst, Digital Transformation Specialist, and Operations Strategist.

DURATION	LOCATION	UCAS POINTS	UCAS CODE	ADDITIONAL ENTRY REQUIREMENTS	ACCREDITATIONS
3 Years	Barrow, Carlisle, Lancaster, London	104–112	N442	GCSE English and Maths at grade 4/C or above.	Association of Chartered Certified Accountants* Chartered Institute of Management Accountants* *Accreditation in progress

BUSINESS MANAGEMENT*

BA (HONS)

*subject to validation
Top-Up Course Available
▲ Integrated Foundation Year (IFY) Available

Lead with confidence and gain a competitive career edge with our Business Management degree. You'll master essential areas—strategy, leadership, marketing, and operations—so you graduate ready for success with practical skills and a deep understanding of what drives organisational performance.

From day one, you'll build a career story through a compulsory work placement, industry speakers, live client briefs, field trips, and a venture-building project. You'll test ideas quickly in simulations and real projects, evidencing impact with the latest tools.

As members of the Chartered Association of Business Schools, our course meets leading professional-body standards and the QAA Subject Benchmark. You'll gain a career-focused education with real, personal support from dedicated tutors and programme leaders.

In Lancaster, you'll engage with the Eden Project Morecambe, the Heysham Gateway logistics and advanced-manufacturing corridor, and a growing digital cluster in data, AI, and cyber. Across Cumbria, nuclear, advanced manufacturing, and West Coast renewables create high-value supply chains and genuine routes into work. In London, you'll study in one of the world's major financial centres.

Informed by applied research in regional growth, sustainability, and SME performance, this degree connects you to projects with real-world impact. Rooted in Cumbria with global reach, come and see where we can take you.

DURATION	LOCATION	UCAS POINTS	UCAS CODE	ACCREDITATIONS
3 years	Carlisle, Lancaster, London	104–112	N100	The Chartered Institute of Marketing*, The Chartered Management Institute* *Accreditation in progress

INDICATIVE MODULE CONTENT

- Business Environment
- Personal and Professional Skills Development
- Principles of Marketing
- Personal and Professional Development
- Economics, Governance, and Sustainable Futures
- Business Analytics and Visualisation with Artificial Intelligence
- Project Management and Operation Management

AFTER THIS COURSE YOU COULD...

Our programme opens doors to careers such as

- Business Manager
- Marketing Manager
- CEO, Entrepreneur
- Finance Manager
- Human Resources Manager

Or you can explore postgraduate programmes for advanced opportunities in your field.





INTERNATIONAL BUSINESS MANAGEMENT*

BA (HONS)

*subject to validation
Top-Up Course Available

As No. 1 university in the UK for producing CEOs and MDs, and No 1 in the North West and in the Top 10 in the UK for graduates into employment or further study, our International Business Management degree is focussed and powered by global opportunities. You will learn how organisations compete across borders while studying in a region where industry, innovation, and landscapes come together, linking your learning directly to local job opportunities and preparing you for global markets.

You will also have direct access to tutors for coaching and feedback, plus close links with employers for guest speakers, site visits, real employer-set projects, and consultancy. You will apply ideas quickly, build evidence of impact from day one, and use AI and data tools to sharpen your analysis. Our student-friendly support and vibrant campus life make it easy to settle in, succeed, and feel at home. Ranked top in the North West for producing entrepreneurs (Novuna, 2023), there is also start-up support and SME networks to help you test ideas, make connections, and secure placements.

Your teaching is informed by our applied research in regional growth, sustainability, and SME performance, connecting you to projects with real-world impact and a global lens. From boardrooms to start-ups, the University of Cumbria prepares you to lead. Rooted in Cumbria with global reach—inspired by one of the UK’s most spectacular settings—come and see where we can take you.

DURATION	LOCATION	UCAS POINTS	UCAS CODE	ACCREDITATIONS
3 years	Lancaster	104–112	N120	The Chartered Institute of Marketing*, The Chartered Management Institute* *Accreditation in progress



TOURISM AND VISITOR ECONOMY MANAGEMENT

BA (HONS)

Passionate about tourism and the visitor economy? Ready to explore how destinations can thrive sustainably in a rapidly changing world? Step into our BA (Hons) Tourism and Visitor Economy Management course and gain the skills to shape the future of this dynamic global industry.

You will develop a strong foundation in management, tourism, and visitor economy studies, with a curriculum aligned to the UNESCO Sustainable Development Goals. This ensures you will explore both the opportunities and challenges of working in the visitor economy while gaining the knowledge and skills to succeed in the sector. Artificial Intelligence and digital skills are embedded throughout the course, preparing you to adapt and innovate in an evolving industry.

Employability is at the heart of this degree. You will benefit from compulsory work placements, consultancy projects, field trips, and site visits, alongside guest lectures from industry experts. Paid industry placements are built into each year of study, ensuring you graduate with practical experience and enhanced career prospects.

Our strong business connections within the tourism and visitor economy provide exciting opportunities to engage with practitioners and organisations through real-world challenges and applied learning, helping you to build confidence, skills, and networks that will set you apart in the workplace.

DURATION	LOCATION	UCAS POINTS	UCAS CODE
3 years	Ambleside	104–112	S102

INDICATIVE MODULE CONTENT

- Business Environment
- AI Applications in Business and Prompt Engineering
- Personal and Professional Skills Development
- Principles of Marketing
- Personal and Professional Development
- Economics, Governance, and Sustainable Futures
- Business Analytics and Visualisation with Artificial Intelligence
- Project Management and Operation Management

AFTER THIS COURSE YOU COULD...

Our course opens doors to careers such as:

- Entrepreneur
- Marketing Manager
- CEO
- Finance Manager
- Human Resources Manager

Or you can explore postgraduate programmes for advanced opportunities in your field.

MODULE EXAMPLES

- Industry Placement
- Digital Technologies in the Visitor Economy
- Project Management
- Sustainable Strategies in the Visitor Economy
- Leadership Insights
- Digital Presence Product and Place

AFTER THIS COURSE YOU COULD...

Career opportunities are extremely varied, with roles available both in the UK and abroad.

On completion of the course, you can expect to progress to at least supervisory level in areas such as tour operations, hotel management, visitor attractions management and events management.

COMPUTER SCIENCE



VIEW COURSES

FUTURE TALENT AWARD

Receive up to a £5,000 Bursary,
12 Week Paid Placement,
and more.



FIND OUT MORE

COMPUTER SCIENCE

BSC (HONS)

+ Available With Placement

Whether you're building the next generation of software, designing immersive games and multimedia platforms, or developing cybersecurity strategies and advanced networks, Computer Science is your gateway to limitless possibilities.

On our BSc (Hons) Computer Science degree, you will explore artificial intelligence, cloud computing, and emerging technologies while developing the skills to shape how we live, learn, and connect: from smart systems to secure infrastructures, your journey into innovation starts here.

Developed in collaboration with our partner BAE Systems, industry focus is embedded within every module, meaning you will gain exposure to industry experts within a professional setting. Over the 3 years you will have the opportunity to work on technical projects designed to build upon your learning. In your final year, you will undertake a Professional Project; a substantial and independent piece of research into a topic of your choice, related to one of your taught modules.

Our Computer Science course is taught at Lancaster or our brand-new Barrow campus, a purpose-built facility equipped with the latest resources and technology.

DURATION	LOCATION	UCAS POINTS	UCAS CODE	ADDITIONAL ENTRY REQUIREMENTS	PARTNER
3 years	Barrow, Lancaster	112–120	B111	32 points in Maths or STEM (Physics/Chemistry/Further Maths/D&T/Computer Science/Electronics/IT/Software Systems Development/Statistics) GCSE English, Maths and Science (or STEM)	BAE Systems

MODULE EXAMPLES

- Fundamentals of Computer Science and Programming
- Computing Platforms and Networking
- Web Development
- Information Systems Design
- Designing Computing Solutions
- Problem Solving and Computational Thinking

AFTER THIS COURSE YOU COULD...

Upon successful completion, you will be qualified to pursue roles such as:

- Software Developer
- Data Scientist
- AI Engineer
- Web Developer
- Cyber Security Analyst
- Network Engineer
- IT Consultant
- 2nd/3rd Line IT Technician



FUTURE TALENT AWARD

Receive up to a £5,000 Bursary, 12 Week Paid Placement, and more.



FIND OUT MORE

CREATIVE AND MEDIA ARTS



VIEW COURSES



MICHELLE
FILM AND TV, BA (HONS)

The University of Cumbria stood out because of its unique offering. I was comforted by the close-knit community of a dedicated Arts campus, where lecturers and current students formed a supportive network. What set it apart for me was the opportunity to pioneer my own path, and to lead my creative projects.

cumbria.ac.uk/applynow

cumbria.ac.uk/opendays

Accreditations and Partners





ANIMATION AND VISUAL EFFECTS

BA (HONS)

▲ Integrated Foundation Year (IFY) Available

Ever dreamt of working on the next blockbuster movie, award-winning TV series, or immersive game production? Our Animation and Visual Effects course is your gateway to mastering the art of bringing stories to life through inspiring animation and cutting-edge visual effects.

Dive into a learning experience that blends creativity with practical skills. Our course doesn't just teach you – it transforms you into a versatile artist ready for the dynamic world of animation and visual effects. With a curriculum grounded in inclusivity, innovative storytelling and studio practice, you'll emerge as a professional who understands the pulse of the industry.

From day one, you'll be immersed in real-world techniques and workflows. Our course is structured to evolve your skills progressively – starting with foundational know-how, advancing to specialised techniques, and culminating in a final project that showcases your unique artistic voice.

Our experienced academics, alongside industry professionals, will guide you through your educational journey. Engage in workshops and guest speaker lectures that not only enrich your learning but also help establish connections within the industry.

DURATION	LOCATION	UCAS POINTS	UCAS CODE
3 years	Carlisle	96–112	W2B6



FILM AND TELEVISION

BA (HONS)

▲ Integrated Foundation Year (IFY) Available

Immerse yourself in the world of storytelling, cinematography, and production on our practical three-year course. Unlock the art of crafting captivating film and TV from concept to completion and discover the power of visual storytelling to engage and inspire audiences.

You'll develop expertise in camera work, lighting, sound, editing, scriptwriting, producing, and directing, empowering you to create exceptional original content. You'll also have the opportunity to work on a variety of projects and live briefs, including short films, TV studio productions, documentaries, experimental pieces, and music videos.

Take advantage of our industry standard Media Suites, TV Studio facilities, and professional AV Department, which provide high-quality cameras to give you every opportunity to realise your potential.

Your learning will be guided by experienced academics, and you'll gain insight from workshops led by industry experts to help refine your unique creative voice and expand your professional network.

DURATION	LOCATION	UCAS POINTS	UCAS CODE
3 years	Carlisle	104–120	P311

MODULE EXAMPLES

- Animation and VFX Pipelines
- Action, Character and Performance
- Virtual Stagecraft
- Script, Storyboard and Previs
- Experimental Narrative and Concept
- Animation and VFX Cinematography
- Research Brief
- Production Review
- Professional Studio Project

AFTER THIS COURSE YOU COULD...

As you start your journey with us, you're not just gaining knowledge – you're creating a portfolio that reflects your unique creativity. By the time you graduate, you'll have a personal showcase highlighting your expertise in animation and visual effects, preparing you for exciting careers such as Animation or VFX Artist, Motion Graphics Designer, Post-Production Specialist, Game Developer, and more.

MODULE EXAMPLES

- Media Craft Skills
- Lens and Edit Craft
- Applied Storytelling
- On Set
- Scene Craft
- Script and Narrative
- Research Portfolio
- Promotion and Pitch
- Graduate Project

AFTER THIS COURSE YOU COULD...

You'll graduate with a sharp, industry-ready portfolio that proves your creative talent, technical ability, and professional potential. You'll be equipped to step straight into roles such as:

- Filmmaker
- Scriptwriter
- TV Producer
- Location Manager
- Lighting Technician
- Sound Technician

FINE ART

BA (HONS)

▲ Integrated Foundation Year (IFY) Available

Art is more than a skill; it's a language of expression. Our course encourages you to delve deep into your creative psyche to develop art that is not only aesthetically pleasing, but also rich in meaning and context. Here, you'll learn to embed your personal experiences and perspectives into your work, making each piece a powerful reflection of your unique artistic voice.

On this interdisciplinary Fine Art course, you'll develop professional-level skills across disciplines such as drawing, painting, sculpture, printmaking, ceramics, photography, filmmaking, and digital media. Whether you prefer working with clay, paint, or digital tools, this course empowers you to experiment and express yourself through your chosen medium.

Our studios provide inspiring spaces for creativity, including a life drawing studio and fully equipped workshops for 3D printing, ceramics, woodworking, metalworking, textiles, and printmaking, with technicians on hand for training and support.

Our practising artist tutors will support and inspire your studio practice, providing a deep understanding of Fine Art from historical, theoretical, and critical perspectives. You'll develop entrepreneurial skills and have opportunities to showcase your work, visit galleries, create your own space, and curate public exhibitions for valuable professional experience.

DURATION	LOCATION	UCAS POINTS	UCAS CODE	ADDITIONAL ENTRY REQUIREMENTS
3 years	Carlisle	104–112	W100	All places are offered subject to successful portfolio and artist conversation

MODULE EXAMPLES

- 2D
- 3D
- Collaborative Practice
- Enquiry 1: Artistic Autonomy
- Intersections
- The Professional Self
- Practice 1: Research Strategies
- Independent Research Paper
- Practice 2: Self-Designed Exploration

AFTER THIS COURSE YOU COULD...

Throughout the course you'll develop a strong portfolio that demonstrates your creative and practical skills and experience. Graduates with a Fine Art degree may pursue careers as professional artists, art educators, museum curators, art therapists, graphic designers, or in various creative industries.



Student at one of our Graduate Art Degree Shows



GAMES DESIGN

BA (HONS)

▲ Integrated Foundation Year (IFY) Available

Turn your passion for gaming into a career shaping the future of one of the world's most exciting industries. This degree gives you the creative vision and technical know-how to become a standout game artist and designer.

From your very first day, you'll dive into the art and design of games—building a professional portfolio that blends traditional skills like drawing and concept art with advanced techniques in 3D modelling, texturing, and game engines. Using industry-standard software in our dedicated design labs, you'll create playable prototypes that bring your imagination to life.

But it's not just about the tools—it's about you. You'll learn how to collaborate, pitch ideas, and work as part of a team, developing the confidence and creativity that employers in this multi-billion-pound industry are looking for.

Join a vibrant, supportive community of designers, artists, and storytellers, and graduate ready to make your mark in the fast-growing world of gaming.

MODULE EXAMPLES

- Drawing, Visualisation and Concept Art
- 3D Modelling
- Collaborative Practice
- Concept to Prototype
- Concept Art and Visualisation
- Texturing
- Group Game Project
- Theory and Research Methods in the Arts
- Major Project

AFTER THIS COURSE YOU COULD...

Upon successful completion, you will be qualified to pursue careers in areas such as:

- Concept Artist
- Level Designer
- UI Designer
- 3D Modeller
- Texture Artist
- Programmer

DURATION	LOCATION	UCAS POINTS	UCAS CODE
3 years	Carlisle	104–112	W282

GRAPHIC DESIGN

BA (HONS)

▲ Integrated Foundation Year (IFY) Available

Ignite your creativity and make an impact within the field of graphic design. From the moment your design is brought to life, there's no greater joy than seeing it out there in the real world. The art of combining typography, illustration, and photography to tell a captivating story is a craft that leaves a lasting impression.

Our career-focused course is highly practical, giving you plenty of hands-on experience. You'll learn graphic design, magazine design, illustration, UI/UX, and typography from experts in each of these specialisms, and use industry-standard software, equipment, and facilities.

You'll gain the necessary creative and technical expertise, experience, and confidence to launch your career whilst building the problem-solving, team working, and time management skills needed to be a successful graphic designer. You will further develop impactful visual communication skills as you refine the art of engaging and captivating audiences through your designs across both print and digital media.

Prepare yourself to be challenged and push boundaries with live briefs from our established network of industry professionals. You'll join a vibrant creative community and be supported by expert tutors to discover, develop, and translate your artistic voice in design.

DURATION	LOCATION	UCAS POINTS	UCAS CODE	ADDITIONAL ENTRY REQUIREMENTS
3 years	Carlisle	96–112	W210	All places are offered subject to successful portfolio and artist conversation



Image by BA (Hons) Graphic Design student Sarah Hasham

MODULE EXAMPLES

- Introducing Visual Communication
- Multi-Dimensional Graphic Design
- Collaborative Practice
- The Designer's Toolkit
- Type and Typography
- Graphic Design Projects
- Advanced Design Projects
- Independent Research Paper
- Graphic Design Showcase

AFTER THIS COURSE YOU COULD...

You'll build a robust portfolio of work for exhibits to showcase your graphic design training and display your talent to potential employers.

Our graduates have gone on to work for well-known names such as Time Out, MTV, Conde Nast, IPC, Future Publishing, Mammoth, Wallpaper and the BBC, with others setting up their own design studios such as the renowned F37.com and SNASK.

ILLUSTRATION

BA (HONS)



▲ Integrated Foundation Year (IFY) Available

Image by BA (Hons) Illustration student Abbie Hodges

Whether you're dreaming of bringing stories to life through children's book illustration, shaping worlds with concept art for games and film, or helping make bold statements with editorial work, our course is here to help turn your creative ambitions into a thriving career. We'll support you in developing a strong, versatile practice in illustration—one that's rooted in drawing, communication, and visual thinking.

On our illustration degree, we will help you develop strong drawing, composition, and colour skills that will underpin your personal visual language, allowing you to develop a unique voice as an artist. You'll gain the experience, confidence, and advanced technical skills you need to succeed. We are unique amongst illustration courses in giving you a thorough grounding in graphic design which is highly regarded and recognised by industry.

You'll receive extensive feedback, support, and advice throughout your studies and have access to professional facilities and equipment, as well as the opportunity to work on a variety of projects, including 'live briefs' to develop and hone your skills.

You'll be allocated a dedicated space within our open-plan Illustration and Graphic Design studio, which you can personalise to suit your creative needs. Students across all year groups work within this larger professional space, so you'll also get the chance to meet and collaborate with peers, share feedback, and discuss ideas.

MODULE EXAMPLES

- Introducing Visual Communication
- The Anatomy of an Illustration Project
- The Fundamentals of Drawing
- Collaborative Practice
- The Illustrator's Toolkit
- Drawing
- Illustration Projects
- Advanced Illustration Projects
- Independent Research Paper
- Illustration Showcase

AFTER THIS COURSE YOU COULD...

You'll gain the skills to apply your style across a wide range of industries, including publishing, advertising, fashion, entertainment, and editorial.

Our graduates have gone on to work for well-known names such as the BBC, Penguin, the NFL, Scholastic Publishing, New Scientist, Rolling Stone, The Hollywood Reporter, Lonely Planet, Thames and Hudson, The Observer, FIFA, Liverpool FC, the NBA, and Barcelona FC.

DURATION	LOCATION	UCAS POINTS	UCAS CODE	ADDITIONAL ENTRY REQUIREMENTS
3 years	Carlisle	104–112	W220	All places are offered subject to successful portfolio and artist conversation





PHOTOGRAPHY

BA (HONS)

▲ Integrated Foundation Year (IFY) Available

Kickstart your photography career on an Association of Photographers (AOP) accredited course, where two-thirds of your time is dedicated to hands-on, practical learning. Our BA (Hons) Photography degree provides a deep understanding of production outcomes for image editing, print, and web platforms through technical workshops and personalised practical support.

You'll have access to industry-standard facilities, including black-and-white and specialist colour darkrooms with a Colenta colour processor, as well as three versatile, fully equipped shooting studios.

Our dedicated professional photography technician and expert tutor team will support your individual creative development, build your skill set, and prepare you for a career as a professional photographer.

You will work both on location and on campus, with inspiring field trips and the spectacular Lake District on your doorstep—offering natural environments, diverse culture, and countless outdoor activities to engage with.

A programme of visiting professional photographers provides workshops and expert guidance, leading to valuable networking opportunities and industry insights that will shape your creative practice and future career.

DURATION	LOCATION	UCAS POINTS	UCAS CODE	ADDITIONAL ENTRY REQUIREMENTS
3 years	Carlisle	104–112	W641	All places are offered subject to successful portfolio and artist conversation



WILDLIFE MEDIA

BA (HONS)

▲ Integrated Foundation Year (IFY) Available

Image by BA (Hons) Wildlife Media student Samuel Richardson

Unleash your passion for wildlife and media storytelling by transforming them into impactful messages that inspire and influence others. Explore the fascinating world of wildlife biodiversity, habitat, and behaviour, while diving into the theory and practice of documentary filmmaking and wildlife photography.

Cumbria is renowned for its diverse landscapes and rich biodiversity, offering a variety of habitats that support numerous species. These include mammals such as otters and deer; birds like kingfishers, bitterns, egrets, and ospreys; and endangered species such as curlews, red squirrels, and pine martens. As you study within a UNESCO World Heritage Site, also near the English Lake District, your studies will be enhanced by hands-on practical experiences through field trips and visits to Areas of Natural Beauty (AONB) and Sites of Special Scientific Interest (SSSI).

Our partnerships with notable wildlife organisations will allow you to collaborate and network with leading industry groups, such as Cumbria Biodiversity Data Centre, Cumbria Wildlife Trust, Lake District National Park Authority (LDNPA), RSPB, Wildfowl and Wetland Trust (WWT), and The Royal Television Society.

You'll be encouraged to embrace challenges, push boundaries, and embark on a journey of self-discovery within a supportive creative environment. You'll produce experimental films, curate captivating photography exhibitions, produce thought-provoking documentaries, and take the lead planning your own expedition.

DURATION	LOCATION	UCAS POINTS	UCAS CODE	ADDITIONAL ENTRY REQUIREMENTS
3 years	Carlisle	104–112	CW36	All places are offered subject to successful portfolio and artist conversation

MODULE EXAMPLES

- Photographic Image Capture
- Picturing Place: Culture and Identity
- Networks and Narratives: Photography in the Community
- Immersive Image-Making
- The Photographic Interface: Industry Experience
- Blueprint of Practice
- Independent Research Paper
- Resolution of Practice

AFTER THIS COURSE YOU COULD...

Graduates can pursue careers in a wide range of fields, including Freelance Photography (Advertising, Editorial, and Portraiture), Film and TV, Graphic Design, Teaching, and many more.

Throughout your time with us, you'll have the opportunity to build a strong portfolio showcasing your creativity, skills, and technical experience.

MODULE EXAMPLES

- Media Craft Skills
- Developing Photography Practice
- Naturalist Skills
- Documentary
- Interpreting Animal Behaviour for Media
- Wildlife Photography
- Graduate Project
- The Application of Media in Conservation
- Research Project

AFTER THIS COURSE YOU COULD...

Throughout your time with us, you'll have built an impressive and strong portfolio showcasing your creativity, skills, technical experience, and knowledge. Graduates can pursue careers in a wide range of fields, including Wildlife Photography, Documentary Filmmaking, Commercial Film and Television, Media Careers, Conservation Careers, working for charities and NGOs as media experts, entrepreneurs running their own businesses, educators in media fields, and many more.

EDUCATION AND TEACHING



VIEW COURSES



BECCA PRIMARY EDUCATION (5-11): INCLUSION WITH SEND WITH QTS

I have had an incredible experience overall. If you want to have a more personal relationship with lecturers, smaller class groups, and a place where the lecturers care about you, I would recommend coming on the teaching course at Cumbria.



Accreditations
and Partners



Department
for Education

PRIMARY AND EARLY YEARS EDUCATION (3-11 YEARS) WITH QTS

BA (HONS)



This comprehensive and forward-thinking course is designed for individuals passionate about shaping the development and education journey of children aged 3-11. Upon completion, you will be equipped to teach all Curriculum areas for Early Years, Key Stage 1, and Key Stage 2.

This course has been structured to blend a rich mix of academic theory with the necessary practical training and experience to achieve Qualified Teacher Status (QTS). With this qualification, you will graduate with the confidence to positively impact the lives of children straight away, and can immediately pursue teaching roles.

During this degree, you will gain hands-on teaching experience with 24 weeks of school-based placements, which offer real-world classroom exposure and skill development. Unique experiential placements extend learning beyond traditional environments, ensuring a well-rounded educational experience.

Academic assessments support you in developing your own areas of interest, allowing you to pursue your educational passions. Our supportive environment will enhance your learning experience and prepare you for a fulfilling career in education.

MODULE EXAMPLES

- Inclusive Teaching and Learning
- Beginning to Teach English
- Beginning to Teach Maths
- Understanding Teaching and Learning in the Early Years
- Phonics and Early Reading
- Full range of Foundation subjects across 2 modules each year
- PSHE Education
- Small Scale Research

AFTER THIS COURSE YOU COULD...

This course includes QTS (Qualified Teacher Status), so you can start applying for your first teaching position while you're still studying with us.

This degree offers a wide range of career opportunities within the field of education, including Primary School Teacher, Early Years Educator, Educational Consultant, Educational Publishing, and further study or research, to name a few.

DURATION	LOCATION	UCAS POINTS	UCAS CODE	ADDITIONAL ENTRY REQUIREMENTS
3 years	Lancaster, London, Carlisle	112-120	X124	Interview, DBS and medical checks required; GCSE English, Maths and Science at grade 4/C or above

PRIMARY EDUCATION (5-11 YEARS): INCLUSION WITH SEND WITH QTS

BA (HONS)



With over 1.7 million pupils in England having special educational needs, it has never been more important for teachers to be prepared to understand and meet their needs. Teaching is one of the most rewarding careers, and with a specialism in Inclusion and SEND, you'll be equipped to support every child to thrive—no matter their starting point.

Our Primary Education with Inclusion and SEND Specialism degree is designed to give you real-world experience from day one. You'll explore how to recognise and remove barriers to learning, gaining the confidence and expertise to teach children with Special Educational Needs and Disabilities (SEND) across both mainstream and specialist settings.

With 24 weeks of school placements—including opportunities in Key Stage 1, Key Stage 2, and special schools—you'll apply your learning in real classrooms, preparing you to meet the needs of every child from your very first class.

You'll join a supportive learning community and be guided by expert tutors who are passionate about inclusive education. Our student-centred approach includes dynamic seminars, debates, roleplay, and case studies that challenge your thinking and build your confidence.

Rated 'Good' by OFSTED (2023), this course empowers you to become a compassionate, skilled, and adaptable teacher.

MODULE EXAMPLES

- Barriers to learning
- Phonics and early reading are studied discretely each year with PSHE as a focus in year 2
- Teaching and Learning in Primary Curriculum subjects
- Teaching and Learning in Maths and English

AFTER THIS COURSE YOU COULD...

This degree includes QTS (Qualified Teacher Status), so you can start applying for your first teaching position while you're still studying with us.

This course offers a wide range of career opportunities within the field of education, including Inclusion Teacher, SEND Coordinator, SEND Specialist Teacher, Educational Consultant, and further study or research, to name a few.

DURATION	LOCATION	UCAS POINTS	UCAS CODE	ADDITIONAL ENTRY REQUIREMENTS
3 years	Lancaster	112-120	X126	Interview, DBS and medical checks required; GCSE English, Maths and Science at grade 4/C or above

HEALTHCARE PROFESSIONS



VIEW COURSES



ADELE
NURSING/REGISTERED NURSE: ADULT
NURSING, BSC (HONS)

The degree has a mixture of theory and practice hours. This is fantastic as you get to put into practice all that you have learned in the lecture theatres. Moreover, you get feedback from your lecturers and practice supervisors/assessors on how you are progressing.

Up to £5,000 NHS Learning Support Fund
available. See course page to find out more.

cumbria.ac.uk/applynow

cumbria.ac.uk/opendays

Accreditations
and Partners

nmc
Nursing &
Midwifery
Council

SoR 100
THE QUALITY OF HIGHER EDUCATION

RCOT Royal College of
Occupational
Therapists

hpc health & care
professions
council

CS CHARTERED
SOCIETY
OF
PHYSIOTHERAPY

NHS
South Western
Ambulance Service
NHS Foundation Trust



DIAGNOSTIC RADIOGRAPHY

BSC (HONS)

▲ Health and Social Care Integrated Foundation Year (IFY) Available

Diagnostic radiographers use advanced imaging technology to examine body systems and organs, supporting the diagnosis and monitoring of diseases and injuries, and helping ensure patients receive the most appropriate treatment. Our degree will equip you with the knowledge and skills required to qualify as a diagnostic radiographer and allow you to apply to be registered with the Health and Care Professions Council (HCPC).

Our industry-active tutors are dedicated to teaching you current knowledge and insights in medical imaging. You will have access to £2 million worth of digital imaging equipment, including newly updated AGFA x-ray rooms and Siemens x-ray rooms, in our cutting-edge facilities.

You will also spend approximately half of your course on clinical placements covering a range of clinical imaging techniques such as projectional radiography, computerised tomography, and magnetic resonance imaging, with some clinical time in areas such as radionuclide imaging and mammography.

We have strong links with local placement providers, including NHS hospitals and independent medical imaging service providers. Our department also has links with leading specialist centres such as The Christie Hospital, one of Europe's leading cancer centres.

The NHS Learning Support Fund, offering at least £5,000 per year, is available to eligible students. For more information and details of eligibility, visit www.nhsbsa.nhs.uk/lzf.

MODULE EXAMPLES

- Science and Radiation Protection
- Imaging Technology 1
- Applied Clinical Radiography 1
- Applied Anatomy and Pathophysiology and Imaging 1
- Human Science and Patient Care 2
- Research Methods and Investigations used in Professional Practice
- Focused Radiological Practice 1 (Theory)
- Image Evaluation

AFTER THIS COURSE YOU COULD...

Upon successful completion, you will be eligible to apply to register as a Diagnostic Radiographer with the Health and Care Professions Council (HCPC). Radiographers have excellent career paths with fantastic opportunities for progression, working in areas such as: MRI scanning, nuclear medicine, ultrasound, x-ray, interventional radiography/ radiography reporting, computerised tomography (CT), radiography research, and equipment application specialists for medical imaging equipment manufacturers.

DURATION	LOCATION	UCAS POINTS	UCAS CODE	ADDITIONAL ENTRY REQUIREMENTS	ACCREDITATIONS
3 years	Carlisle, Lancaster	112–120	B821	Interview, DBS and medical checks required; GCSE Maths, English and Physics or Combined Science at grade 5/C or above	Society of Radiographers, Health and Care Professions Council

OCCUPATIONAL THERAPY

BSC (HONS)

▲ Health and Social Care Integrated Foundation Year (IFY) Available

Occupational therapists promote health and wellbeing. They work closely with individuals and groups, empowering them to address barriers that prevent them from engaging in everyday activities, identifying solutions, and enabling them to lead the lives they want to lead.

This degree, accredited by the Royal College of Occupational Therapists, will equip you to become an occupational therapist registered with the Health and Care Professions Council (HCPC).

With at least 1,000 hours of practical placement experience, you will immerse yourself in real-world practice working with children, adults and older adults with physical, social, and mental health challenges. We work closely with local NHS Trusts and other organisations to offer quality work placements in NHS hospitals, health and day centres, care homes, councils, and private, voluntary, and independent sector organisations.

Throughout, you will be fully supported by our team, who will get to know you personally and teach you the latest insights in occupational therapy. On campus, you will develop your skills and confidence in nurturing learning environments using our simulation facilities, including our purpose-built Occupational Therapy suite and mock ward.

The NHS Learning Support Fund, offering at least £5,000 per year, is available to eligible students. For more information and details of eligibility, visit www.nhsbsa.nhs.uk/lsf.

MODULE EXAMPLES

- Exploring Occupational Beings
- Exploring Research and Evidence-Based Practice
- Simulation Placement
- Developing Professional Practice Skills
- Developing Global Occupational Therapy Perspectives
- Applied Occupational Therapy
- Future Leaders
- Occupational Therapy in Practice 4

AFTER THIS COURSE YOU COULD...

Upon successful completion, you will be eligible to register as an Occupational Therapist with the Health and Care Professions Council (HCPC) and apply for membership of the Royal College of Occupational Therapists (RCOT). You will be qualified to work in a range of settings, including:

- NHS
- Private, voluntary and independent sector organisations
- Local Authority / Council Services

DURATION	LOCATION	UCAS POINTS	UCAS CODE	ADDITIONAL ENTRY REQUIREMENTS	ACCREDITATIONS
3 years	Carlisle, Lancaster	104–120	B920	Interview, DBS and medical checks required; GCSE English at grade 4/C or above	Health and Care Professions Council, Royal College of Occupational Therapists

PARAMEDIC SCIENCE

BSC (HONS)

Paramedics play a unique and vital role in healthcare, working in unpredictable pre-hospital and emergency settings where no two days are ever the same. It's a career that offers variety, challenge, and the chance to make a real difference in people's lives and in your local community.

Our BSc (Hons) Paramedic Science degree prepares you for registration with the Health and Care Professions Council (HCPC) and equips you to deliver high-quality care across a range of settings. You'll gain the clinical skills, knowledge, and confidence to assess, treat, and manage patients in pre-hospital and emergency care.

You'll learn from a dedicated team and practise in specialist simulation facilities, including a simulated ambulance, paramedic training rooms, and mock patient residence. High-fidelity simulation events with other emergency services will help you develop teamwork and decision-making skills.

Placements with the ambulance service and in settings such as emergency departments, hospital theatres, and residential homes will further build your clinical expertise and compassionate care skills.

The NHS Learning Support Fund, offering at least £5,000 per year, is available to eligible students. For more information and details of eligibility, visit www.nhsbsa.nhs.uk/lsf.

MODULE EXAMPLES

- Developing Person-Centred Care in Paramedic Practice 1
- Physical and Clinical Sciences
- Professionalism and Followship
- Developing Person-Centred Care in Paramedic Practice 2
- Clinical Practice 2
- Social Health Behavioural Sciences
- Understanding Primary Care
- Contemporary Issues in Paramedicine
- Leadership and Management

AFTER THIS COURSE YOU COULD...

Upon successful completion, you will be eligible to register as a Paramedic with the Health and Care Professions Council (HCPC). You will be qualified to work in a variety of settings, including:

- Acute and primary care
- NHS ambulance services
- Private sector
- Sporting sector

DURATION	LOCATION	UCAS POINTS	UCAS CODE	ADDITIONAL ENTRY REQUIREMENTS	ACCREDITATIONS
3 years	Lancaster	112–120	B780	Full UK Driving Licence; Interview, DBS and medical checks required; A level or equivalent in Natural or Social Science; GCSE English, Maths and Science at grade 4/C or above achieved at point of application	Health and Care Professions Council

PHYSIOTHERAPY

BSC (HONS)

▲ Health and Social Care Integrated Foundation Year (IFY) Available

Physiotherapists provide vital treatments and interventions to improve mobility, reduce pain, and promote wellbeing – from helping someone recover from an injury, to managing a respiratory or neurological condition. This degree provides the skills and experience needed to qualify as a physiotherapist registered with the Health and Care Professions Council (HCPC).

You will learn the theoretical and practical skills needed to diagnose and manage musculoskeletal, respiratory, and neurological conditions. Our curriculum spans diverse practice areas, from acute hospital settings to patient care in the home, equipping you for the varied demands of your future career.

This course blends classroom-based theory, practical skills classes, and simulated learning to enhance your confidence in comfortable learning environments before progressing to real-life cases.

You will also complete at least 1,000 hours of work-based practice placements, taking advantage of our excellent employer links. These placements will allow you to experience the full spectrum of physiotherapy specialisms, preparing you for the many directions your career can take.

The NHS Learning Support Fund, offering at least £5,000 per year, is available to eligible students. For more information and details of eligibility, visit www.nhsbsa.nhs.uk/lsf.

MODULE EXAMPLES

- Core Physiotherapy Assessment and Management Skills
- Musculoskeletal Anatomy and Movement
- Pathophysiology for Contemporary Physiotherapy
- Musculoskeletal Pathology and Treatment
- Neurological Pathology and Treatment
- Cardiovascular Pathology and Treatment
- Management of Complex Conditions
- Leadership and the Global Practitioner
- Contemporary Issues and Advancing Physiotherapy

AFTER THIS COURSE YOU COULD...

Upon successful completion, you will be eligible to register as a Physiotherapist with the Health and Care Professions Council (HCPC) and you will be accredited by the Chartered Society of Physiotherapy (CSP). You will be qualified to work in a variety of settings, including:

- NHS
- Private sector
- Private practice organisations

DURATION	LOCATION	UCAS POINTS	UCAS CODE	ADDITIONAL ENTRY REQUIREMENTS	ACCREDITATIONS
3 years	Carlisle	120–128	B160	Interview, DBS and medical checks required; 40 UCAS points in A-level Biology or PE; GCSE English, Maths and Biology/Combined Science at grade 4/C or above	Health and Professions Council, Chartered Society of Physiotherapy

MIDWIFERY

BSC (HONS)

▲ Health and Social Care Integrated Foundation Year (IFY) Available

Launch a rewarding career as a midwife with specialist vocational training and dedicated learner support on our Midwifery degree.

At the heart of this course is a team of passionate lecturers who bring invaluable clinical experience to their teaching. Committed to your success, they provide excellent pastoral support to ensure you maximise your potential during your degree. Theoretical teaching is based on the latest evidence and research, using modern teaching methods and technology to create a vibrant and engaging learning experience.

The midwifery profession is brought to life on our campus with our clinical skills and simulation facilities. You will experience simulated ward areas, our midwifery birthing suite, and immersive simulation room, which offer safe and supportive environments for you to develop your skills and confidence under the guidance of our experienced academic team.

A hallmark of our Midwifery degree is the emphasis on practical experience. You will spend half of your course – equivalent to 2,300 hours – engaged in real-world practice in a range of settings, including in the community and hospital.

The NHS Learning Support Fund, offering at least £5,000 per year, is available to eligible students. For more information and details of eligibility, visit www.nhsbsa.nhs.uk/lsf.

MODULE EXAMPLES

- The Midwife as Professional 1
- The Midwife as Scholar 1
- Universal Care 1
- Midwifery Practice 2
- The Midwife as Professional 2
- Additional Care 2
- Midwifery Practice 3
- Physical Assessment and Management of the Newborn
- The Midwife as Scholar 3

AFTER THIS COURSE YOU COULD...

Upon successful completion, you will be eligible to register as a Midwife with the Nursing and Midwifery Council (NMC). You will be qualified to work in a range of settings, including hospitals and community healthcare.

You will also have the opportunity to specialise later in your career.

DURATION	LOCATION	UCAS POINTS	UCAS CODE	ADDITIONAL ENTRY REQUIREMENTS	ACCREDITATIONS
3 years	Carlisle, Lancaster	112–128	B720	Interview required; Level 3 in Biology or PE is preferred GCSE English, Maths, Biology/Combined Science at a grade 4/C or above	Nursing and Midwifery Council

NURSING ASSOCIATE

FDSC

Provides direct entry into the second year of our BSc (Hons) Adult Nursing, Children's Nursing, Learning Disabilities Nursing and Mental Health Nursing degrees

Are you looking to become a nurse but not sure which specialism to choose?

On this foundation degree, you will work across all fields of nursing to register as a nursing associate with the Nursing and Midwifery Council in just two years. This course is also the perfect stepping stone towards further training to qualify as a Registered Nurse.

You will play a vital role in the nursing team, working closely with healthcare assistants and registered nurses across adult, children's, learning disabilities, and mental health nursing. Our expert tutors will deliver theoretical teaching rooted in the latest evidence and research, and will support you throughout the course to help you reach your full potential.

On campus, you will immerse yourself in a range of nursing scenarios using our clinical skills and simulation facilities. These include simulated ward areas, high-dependency care areas, home spaces, and our cutting-edge immersive simulation room.

This simulated learning will prepare you for clinical placements, where you will spend half of your degree gaining valuable real-world experience in settings such as hospitals, nursing homes, GP surgeries, and clinics.

MODULE EXAMPLES

- Applied Biological Sciences for Health
- Concepts of Health and Social Policy
- Introduction to Nursing Associate Practice
- Pharmacology and Medicine Therapeutics
- Living with Long Term Conditions Across the Lifespan
- The Nursing Associate as Leader

AFTER THIS COURSE YOU COULD...

Upon successful completion, you will be eligible to practise as a Nursing Associate registered with the Nursing and Midwifery Council (NMC). You will be qualified to work within:

- Adult nursing
- Children's nursing
- Learning disabilities nursing
- Mental health nursing

You will also be able to complete further training to qualify as a Registered Nurse through a top-up course or degree apprenticeship.

DURATION	LOCATION	UCAS POINTS	UCAS CODE	ADDITIONAL ENTRY REQUIREMENTS	ACCREDITATIONS
2 years	Carlisle, Lancaster	48	B750	Interview, DBS and medical checks required; GCSE English and Maths at grade 4/C or above	Nursing and Midwifery Council

NURSING/REGISTERED NURSE: ADULT NURSING

BSC (HONS)

▲ Health and Social Care Integrated Foundation Year (IFY) Available

This course is designed to give you the perfect balance of theory and practice needed to register with the Nursing and Midwifery Council (NMC) and practise as an adult nurse.

Our academic team are experienced practitioners with a wide range of clinical backgrounds. As well as delivering theoretical teaching based on the latest research and informed by patients' experiences, they will support you throughout your degree to ensure your student experience is fulfilling and enjoyable.

On campus, you will immerse yourself in our student nurse community and take full advantage of our clinical skills and simulation facilities. These include our simulated ward areas, high-dependency care areas, home spaces, and immersive simulation room.

In addition to your academic study, you will spend equal time on placement within the clinical practice setting, including a wide variety of inpatient, hospital, and community placements throughout Cumbria and Lancashire. Our unique campus locations mean you will gain wide-ranging experience working with diverse patient groups in both rural and city areas.

The NHS Learning Support Fund, offering at least £5,000 per year, is available to eligible students. For more information and details of eligibility, visit www.nhsbsa.nhs.uk/lsf.

MODULE EXAMPLES

- Foundations of Nursing Associate Practice
- Applied Biological Sciences across the lifespan
- Concepts of Health and Wellbeing
- Fundamentals of Decision Making
- Developing Nursing Associate Practice
- Advancing Nursing Associate Practice
- Clinical Decision Making and Preparation for Professional Practice

AFTER THIS COURSE YOU COULD...

Upon successful completion, you will be eligible to register as an Adult Nurse with the Nursing and Midwifery Council (NMC). You will be qualified to work in an exciting range of settings and specialisms, including: hospital settings, community settings, private and voluntary sector, nurse specialist roles, schools, and prison nursing.

You will also be able to pursue a career in education, research or management, and apply for postgraduate study.

DURATION	LOCATION	UCAS POINTS	UCAS CODE	ADDITIONAL ENTRY REQUIREMENTS	ACCREDITATIONS
3 years	Carlisle, Lancaster, Barrow	96–112	B700	Interview, DBS and medical checks required; GCSE English and Maths at grade 4/C or above	Nursing and Midwifery Council

NURSING/REGISTERED NURSE: CHILDREN'S NURSING

BSC (HONS)

▲ Health and Social Care Integrated Foundation Year (IFY) Available



Kickstart a rewarding career as a children's nurse registered with the Nursing and Midwifery Council (NMC) on our Children's Nursing degree.

This course strikes a perfect balance between theory and practice, with half of your time spent on placement and half of your time learning on campus. Our experienced academic team will deliver theoretical teaching rooted in the latest evidence and research, and informed by the narratives of families and children.

You will boost your skills and confidence in safe and supportive learning environments using our on-campus clinical skills and simulation facilities. These include our simulated ward areas, high-dependency care areas, home spaces, and our immersive simulation room.

This learning will be complemented by clinical placements in a wide range of settings such as inpatient, community, private, and voluntary sectors. Our unique campus locations mean you will gain experience working with diverse patient groups in both rural and city areas. We have excellent links with local NHS Trusts, ensuring all students benefit from quality placements and excellent employability rates after graduation.

The NHS Learning Support Fund, offering at least £5,000 per year, is available to eligible students. For more information and details of eligibility, visit www.nhsbsa.nhs.uk/lzf.

MODULE EXAMPLES

- Applied Biological Sciences Across the Lifespan
- Concepts of Health and Wellbeing
- Advancing Nursing Practice
- Consolidating Children's Nursing Practice
- Public and Population Health
- Transition to Registered Practice

AFTER THIS COURSE YOU COULD...

Upon successful completion, you will be eligible to register as a Children's Nurse with the Nursing and Midwifery Council (NMC). You will be prepared to develop a dynamic career working with children, young people and their families in a range of settings, including: accident and emergency care, neonatal care, specialist children's hospitals, paediatric intensive care, community children's team and outreach, and school nursing.

You will also be able to pursue a career in education, research or management, and apply for postgraduate study.

DURATION	LOCATION	UCAS POINTS	UCAS CODE	ADDITIONAL ENTRY REQUIREMENTS	ACCREDITATIONS
3 years	Carlisle, Lancaster	104–112	B730	Interview, DBS and medical checks required; GCSE English and Maths at grade 4/C or above	Nursing and Midwifery Council

NURSING/REGISTERED NURSE: LEARNING DISABILITIES NURSING

BSC (HONS)

▲ Health and Social Care Integrated Foundation Year (IFY) Available



Empower children, young people, and adults to live their best lives. This degree equips you to deliver specialised and inclusive support, improving healthcare, social inclusion, and overall quality of life for individuals with learning disabilities.

There is a strong emphasis on collaborative teaching from all fields of nursing, which is informed by clients' experiences of learning disability healthcare. Throughout your degree, our expert academic team will support you to ensure your experience is fulfilling and enjoyable.

You will boost your skills and confidence in safe and supportive learning environments using our on-campus clinical skills and simulation facilities. These include our simulated ward areas, high-dependency care areas, home spaces, and our immersive simulation room.

You will also spend half of your degree on clinical placements, providing nursing care to individuals and families in a variety of settings. You will have many opportunities to network with local services, and you will become an advocate for people with learning disabilities. Our unique campus locations mean you will gain wide-ranging experience in both rural and city areas.

The NHS Learning Support Fund, offering at least £5,000 per year, is available to eligible students. For more information and details of eligibility, visit www.nhsbsa.nhs.uk/lzf.

MODULE EXAMPLES

- Applied Biological Sciences Across the Lifespan
- Concepts of Health and Wellbeing
- Advancing Nursing Practice
- Consolidating Learning Disability Nursing Practice
- Public and Population Health
- Transition to Registered Practice

AFTER THIS COURSE YOU COULD...

Upon successful completion, you will be eligible to register with the Nursing and Midwifery Council (NMC). You will be qualified to work with people across the lifespan, and specialise in areas such as: behaviour support, children and young people, health facilitation and continuing healthcare coordination, intensive support services, mental health services/ learning disabilities, and end-of-life care.

You will also be able to pursue a career in education, research or management, and apply for postgraduate study.

DURATION	LOCATION	UCAS POINTS	UCAS CODE	ADDITIONAL ENTRY REQUIREMENTS	ACCREDITATIONS
3 years	Lancaster, Carlisle	96–112	B763	Interview, DBS and medical checks required; GCSE English and Maths at grade 4/C or above	Nursing and Midwifery Council

NURSING/REGISTERED NURSE: MENTAL HEALTH NURSING

BSC (HONS)

▲ Health and Social Care Integrated Foundation Year (IFY) Available

Make a meaningful impact in the lives of individuals experiencing mental illness. Our Mental Health Nursing degree prepares you to become a skilled and highly sought-after professional in this vital field.

You will boost your skills and confidence in safe and supportive learning environments using our on-campus clinical skills and simulation facilities. These include our simulated ward areas, high-dependency care areas, home spaces, and our immersive simulation room.

Alongside this, you will spend equal time on clinical placement in a variety of settings, including inpatient hospital care, dementia care, community, and specialist mental health provision. You will care for individuals across the lifespan who are experiencing different mental health conditions, and our unique campus locations mean you will gain wide-ranging experience working with diverse patient groups in both rural and city areas.

Our academic team are experienced practitioners with a wide range of clinical backgrounds and academic interests. As well as delivering theoretical teaching based on the latest evidence and research, they will support you throughout your degree to ensure your student experience is fulfilling and enjoyable.

The NHS Learning Support Fund, offering at least £5,000 per year, is available to eligible students. For more information and details of eligibility, visit www.nhsbsa.nhs.uk/lsf.

DURATION	LOCATION	UCAS POINTS	UCAS CODE	ADDITIONAL ENTRY REQUIREMENTS	ACCREDITATIONS
3 years	Carlisle, Lancaster	104–112	B760	Interview, DBS and medical checks required; GCSE English and Maths at grade 4/C or above	Nursing and Midwifery Council

PRE-HOSPITAL EMERGENCY CARE

CERTIFICATE HE

This one-year course, run in partnership with the South Western Ambulance Service, provides a unique opportunity to enter the ambulance service and will help you gain access to a paramedic career pathway.

You will be taught by both university academic staff and experienced paramedics from a range of clinical backgrounds, with teaching delivered both online and face-to-face at Wiltshire Air Ambulance base. This blended learning provides flexibility, allowing you to fit your learning around other responsibilities, such as caring duties.

Our expert academics will support you throughout the course, and you will join a close-knit community of students.

As well as your academic training, you will gain real-world experience of pre-hospital emergency care through placements with the South Western Ambulance Service in Bristol, Wiltshire, Somerset, or Dorset.

To prepare you for employment within the ambulance service, you will also complete blue light training (the emergency driving qualification) as part of the course.

DURATION	LOCATION	UCAS POINTS	UCAS CODE	ADDITIONAL ENTRY REQUIREMENTS
1 year	South West England, Blended Learning	112–120	B782	Interview, DBS and medical checks required; GCSE English and Maths at grade 4/C or above

MODULE EXAMPLES

- Developing Person-Centred Care in Paramedic Practice 1
- Physical and Clinical Sciences
- Clinical Practice 1
- Professionalism and Fellowship
- Introduction to Research and Evidence-Based Practice

AFTER THIS COURSE YOU COULD...

On successful completion of the course, you will be offered a role as:

- Emergency Care Assistant with the South Western Ambulance Service (subject to pre-employment checks)

Within an average of 6-18 months of completion, you will also be offered a place on the BSc (Hons) Paramedic Science Degree Apprenticeship, which will complete your Paramedic training, enabling you to qualify as a Paramedic.

LAW AND

CRIMINOLOGY



VIEW COURSES



**MILLIE
LAW, LLB (HONS)**

The law team at Cumbria have great connections to many local firms, which means we have many networking opportunities. As a result, I was able to secure work experience with a local firm. Since then, I have secured a training contract with them to complete my Solicitor Qualifying Exams and begin my career in legal practice.



**Accreditations
and Partners**



CRIMINOLOGY AND FORENSIC INVESTIGATION

BSC (HONS)

▲ Integrated Foundation Year (IFY) Available

In a world in which crime has become one of the most pressing sociological, economic, and political concerns, it has never been more important to know and understand why crime happens, how crime is investigated, and how offenders are brought to justice.

This degree was designed by experts with a wealth of real-world experience in answering these questions. You will learn how to work like these professionals, acquiring the knowledge and skills you need by using our state-of-the-art forensic laboratories, working in our 'crime house', and taking part in simulated exercises in crime scene investigation.

You will draw on our long-standing links with criminal justice agencies, gaining an in-depth understanding of how crime and forensic investigation underpins the work of criminal justice professionals (such as Police, CSI investigators, Lawyers, Magistrates and Prison and Probation staff) and third-sector organisations.

When you are ready to join this professional world, you will do so as a highly skilled critical thinker who is able not only to answer key criminological questions but also to effect change through critical, research-based problem analysis.

MODULE EXAMPLES

- Crime Scene Investigation
- Crime and Deviance
- Criminal Justice System
- Forensic Examination
- Expert Witness
- Crime, Punishment and Rehabilitation
- Leading Complex and Major Crime Scene Investigation
- Victimology
- Death Investigation (Optional)

AFTER THIS COURSE YOU COULD...

Explore a wide array of roles and careers, including:

- Crime Scene Investigator
- Police Officer
- Working in HM Courts and Tribunals Service
- Working in HM Prisons
- Working in the Probation Service
- Research positions within Criminal Justice and the 'Third Sector'
- Crime and Evidence Technician

Or you can explore postgraduate programmes for advanced opportunities in your field.

DURATION	LOCATION	UCAS POINTS	UCAS CODE
3 years	Carlisle	104–112	L617

LAW

LLB (HONS)

▲ Integrated Foundation Year (IFY) Available

The rule of law has never been more important as it is today. Our modern Law degree will give you the skills and knowledge to navigate the English legal system and comparative legal frameworks, preparing you for a successful career in a rapidly changing environment.

You will be supported by experienced academics who draw on their diverse legal backgrounds to bring real-world insight and relevance to your studies. Their experience transpires in their teaching excellence – we are rated 1st in the UK for Student Satisfaction with Feedback (Guardian League Tables 2026).

Learning is hands-on. You will participate in mock trials, negotiations and immersive simulations covering civil and criminal dimensions, while visits to courts and local law firms will prepare you for contemporary legal practice in the cyber environment.

Through our strong local and regional partnerships, you will gain opportunities for work placements, networking, and career development. You can also enhance your skills through national competitions, such as the Client Interviewing Competition, and engage with guest speakers from law firms, public bodies, and sector networks.

At Cumbria, you will enjoy a learning experience that is locally rooted, nationally connected, and globally relevant, turning knowledge into opportunity and providing a solid foundation for your legal career.

DURATION	LOCATION	UCAS POINTS	UCAS CODE	ACCREDITATIONS
3 years	Carlisle, Lancaster	104–120	M100	Solicitors Regulation Authority, Bar Standards Board

MODULE EXAMPLES

- Legal Skills
- Contract Law
- The Law of Torts
- Constitutional Law
- Criminal Law
- Lawyering in a Digital Age
- Equity and Trusts
- Business and Employment Law
- Law in Action

AFTER THIS COURSE YOU COULD...

Explore a diverse array of career possibilities, with our degree opening doors to roles such as:

- Solicitor
- Barrister
- Policy Analyst
- Consultant
- Probation Officer
- Civil Service

OUTDOORS AND GEOGRAPHY



VIEW COURSES



BETHANY GEOGRAPHY, BSC (HONS)

I'm always outside, and busy. Walking in the fells, doing things I never expected like caving and ghyll scrambling; I've had so many great opportunities! Our lecturers are really supportive, so that makes things easier.



GEOGRAPHY

BSC (HONS)

▲ Integrated Foundation Year (IFY) Available

In the 21st century, our environment and society are under significant and growing pressure from complex global challenges, making geography more vital than ever in shaping sustainable futures. By combining your curiosity about the world with practical skills and digital tools, you will be well-equipped to explore these challenges and make a meaningful difference.

Learning goes beyond the classroom. You will gain hands-on experience while exploring the diverse natural and cultural landscapes surrounding our Ambleside campus, located in the heart of the Lake District, a UNESCO World Heritage site. Rolling hills, vast lakes, and a rich variety of terrains provide the perfect environment to study geography in the field.

Our academics bring a wealth of experience as lecturers, researchers, and consultants, and are dedicated to sharing their passion for the environment and society. With personalised guidance, they will help you reach your full academic potential.

You will also benefit from our strong industry connections, opening doors to research projects, work placements, volunteering opportunities, and promising careers across a wide range of geography-related fields.

DURATION	LOCATION	UCAS POINTS	UCAS CODE	ADDITIONAL ENTRY REQUIREMENTS
3 years	Ambleside	104–120	F810	32 UCAS points in Geography or Environmental Science. GCSE English, Maths and Science at grade 4/C or above

OUTDOOR ADVENTURE AND ENVIRONMENTAL STUDIES

BSC (HONS)

▲ Integrated Foundation Year (IFY) Available

Turn your passion for outdoor adventurous activities into a rewarding career, developing skills that connect people with nature and highlight the societal benefits of the environment.

Based at our Ambleside campus, set within the stunning Lake District National Park, you will study biodiversity and immerse yourself in the outdoors like never before. Using local fells, valleys, and waters as your classroom, you will develop and apply practical and therapeutic skills that prepare you for a fulfilling career in outdoor education and adventure.

Make the most of the stores, where a range of equipment stands ready for your exploration. Once validated, you will be able to borrow everything from climbing equipment to kayaks, ensuring an enriched experience in the stunning Lake District and propelling your skills and studies to new heights.

You will be supported throughout your journey by academics who are passionate about both the environment and adventure. Their personalised guidance will help you maximise your learning, develop your skills, and make the most of your time in Ambleside.

DURATION	LOCATION	UCAS POINTS	UCAS CODE
3 years	Ambleside	104–120	X300



MODULE EXAMPLES

- Exploring Lake District Landscapes
- Living and Working in Groups Outdoors
- The Earth System
- Habitats and Ecosystems
- European Mountains: Ecology, Culture and Tourism
- Health and Wellbeing and Environmental Health
- Contemporary Global Conservation
- Adventure and Environmental Ethics

AFTER THIS COURSE YOU COULD...

Explore a diverse array of career possibilities, with our course opening doors to roles such as:

- Outdoor Adventure Guide
- Health-related Practitioner
- Environmental Educator
- Teacher
- Conservationist or Environmental Manager
- Outdoor Educator

Or you can explore postgraduate programmes for advanced opportunities in your field.



cumbria.ac.uk/applynow

OUTDOOR ADVENTURE EDUCATION*

BA (HONS)

* subject to validation
▲ Integrated Foundation Year (IFY) Available



Take your passion for the outdoors and turn it into a rewarding and fulfilling career. Whether you want to work as an outdoor leader, adventure sport coach or in outdoor education, this course will help you acquire the skills and confidence to guide others in natural environments through active and experiential learning methods.

You will learn from academics with a great passion for the outdoors, who will not only inspire and upskill you but guide you to become the best leader possible. Along the way, you will gain transferable skills including mentorship, critical thinking, resilience, and problem solving, mastering the art of safely experiencing and teaching adventurous activities.

Throughout your studies, you will explore topics such as health and wellbeing, recreation for life, climate change, and our connection with nature. You will also develop a deep understanding of risk management, leadership, and communication, learning how to design, deliver, and evaluate outdoor experiences that inspire growth and learning.

Based in the heart of the Lake District National Park, your studies will be enriched by one of the most inspiring outdoor learning environments in the world. Here, you will develop your technical and leadership skills through fulfilling practical experiences from kayaking to mountaineering, set against the breathtaking backdrop of the Lakes. These adventures will not only elevate your theoretical understanding but also help you shape your philosophy as an ethical, inclusive, and adventurous educator.

MODULE EXAMPLES

- Living and Working in Groups Outdoors
- Outdoor Professional Development
- Water and Land based Adventure Skills
- Psychological Applications in Outdoor Contexts
- Coaching Individuals and Groups
- Evaluating Outdoor Leadership
- Outdoor Leadership Theory and Practice

AFTER THIS COURSE YOU COULD...

Explore a diverse range of career opportunities, with this degree opening doors to roles such as:

- Adventure Sport Coach
- Outdoor Educator
- Wilderness Guide
- Outdoor Learning Leader
- Recreation Manager
- Teacher.

You may also choose to progress onto postgraduate study, further developing your expertise and advancing your career in outdoor education, leadership, or related fields.

DURATION	LOCATION	UCAS POINTS	UCAS CODE
3 years	Ambleside	104–120	X401

cumbria.ac.uk/opendays

SECURITY

INTELLIGENCE



VIEW COURSES



TOM
SECURITY, INTELLIGENCE AND
INVESTIGATIVE PRACTICE,
BSC (HONS) GRADUATE

I currently work as an Intelligence Analyst, embracing each opportunity and challenge I'm confronted with and transferring course components into the real world.

INTELLIGENCE, CYBER AND NATIONAL SECURITY STUDIES*

BSC (HONS)

* subject to validation

▲ Integrated Foundation Year (IFY) Available

In a world of increasing uncertainty, the demand for specialists who can develop secure, intelligence-driven solutions to threats and risks—particularly those linked to criminal activity—is more critical than ever. This course draws on connections with local, national, and global professionals to guide you from a foundational understanding to a critical, applied position. You'll learn to design intelligence collection plans, strategically manage investigations, and develop solutions to security and cyber threats and risk scenarios, from local incidents to global events. Contemporary case studies are used throughout to illustrate the theoretical knowledge required by industry professionals.

Choose a degree that's embedded in the UK's strategic ecosystems. Designed with local employers in mind and delivered on the doorstep of BAE Systems and the Sellafield nuclear enterprise, our degree offers unrivalled access to real-world scenarios, guest experts, and live briefs across civil nuclear and critical national infrastructure. With work-integrated learning, small-group teaching, and a strong regional placement network, you'll be well prepared to enter the workforce upon graduation.

This degree offers a unique opportunity to study the theory and practice of intelligence and security in both UK and global contexts. You'll explore how intelligence agencies operate, how governments respond to threats, and how security policies are shaped in an increasingly complex world.

INDICATIVE MODULE CONTENT

- Foundations of Security Studies
- Principles of Intelligence
- Policy and Decision Making
- Intelligence and Technology
- Transnational Threats
- Investigative Skills
- Counterintelligence and Security
- Cyber Risks and Management
- Industry Work Placement
- Project

AFTER THIS COURSE YOU COULD...

Explore a diverse array of career possibilities, with our course opening doors to:

- Intelligence Analyst
- Police Careers
- Security Analyst
- Security Consultant
- Risk Specialist
- Crisis Manager
- Resilience Officer
- Protective Security Specialist

DURATION	LOCATION	UCAS POINTS	UCAS CODE
3 years	Carlisle	104–112	N444



PSYCHOLOGY AND SOCIOLOGY



VIEW COURSES



CARLY PSYCHOLOGY WITH COUNSELLING AND PSYCHOTHERAPY, BSC (HONS)

Before coming to university, I didn't expect lectures to be as interactive as they are. On the counselling side of the module, we spend a lot of time having group discussions and this has enabled all of us to build a great relationship with our tutors.

Accreditations
and Partners





PSYCHOLOGY

BSC (HONS)

▲ Integrated Foundation Year (IFY) Available

Explore human behaviour and develop valuable graduate skills with our Psychology degree, accredited by the British Psychological Society (BPS).

This course provides an engaging exploration of human behaviour, cognition, advanced research methods, and hands-on experiential problem-based learning.

You will explore human experience across a range of contexts and lifespans, from understanding the biological basis of behaviour to questioning the impact of social media on child development. Part of your degree will be practical, focusing on research techniques, qualitative, quantitative, and mixed methods, data handling and analysis skills, laboratory reports, and communication skills.

Our software and equipment for collecting experimental data includes the Biopac data acquisition system, MindWave Neurosky headsets, which are used to study and analyse brainwave patterns, and E-prime software for designing and running psychological experiments.

Lectures and seminars are taught by passionate academics, all of whom are researchers and practitioners, which allows you to benefit from their expertise and cutting-edge research. Our lecturers will get to know you individually to ensure you get the most out of your degree and feel supported throughout.

DURATION	LOCATION	UCAS POINTS	UCAS CODE	ACCREDITATIONS
3 years	Carlisle	104–120	C800	The British Psychological Society



PSYCHOLOGY WITH COUNSELLING AND PSYCHOTHERAPY

BSC (HONS)

▲ Integrated Foundation Year (IFY) Available

As one of the very few undergraduate Psychology with Counselling and Psychotherapy joint honours degrees in the UK that offer the opportunity to qualify as a professional counsellor, this course prepares you to help people in distress explore their difficulties, express their feelings and work towards a deeper self-awareness.

On this British Psychological Society (BPS) accredited course, you will explore human experience across a range of contexts and lifespans, from understanding the biological basis of behaviour to questioning the impact of social media on child development. Our expert lecturing team are active in research and practice, and will ensure you feel supported throughout your degree.

You will have the opportunity to get involved in a range of extracurricular activities, including sessions led by experts in the fields of psychology and counselling.

Beyond the classroom, you will complete 100 hours of work experience in the community as a practising counsellor, which is a qualificatory part of the course. Our excellent links with regional and national charities, not-for-profit organisations and penal institutions will open doors to practical experiences that refine your skills and elevate your job prospects.

There will also be opportunities for you to focus on particular areas, tailoring your learning to your personal goals and career aspirations.

DURATION	LOCATION	UCAS POINTS	UCAS CODE	ADDITIONAL ENTRY REQUIREMENTS	ACCREDITATIONS
3 years	Carlisle	96–112	C802	DBS check required	The British Psychological Society

MODULE EXAMPLES

- Psychology in Action
- Introduction to Data Analysis
- Introduction to Psychopathology
- Development, Brain and Cognition
- Research Methods and Statistics
- Social and Community Psychology
- Individual Differences: Abilities, Personalities, and Measuring Differences
- Psychological Literacy and Careers
- Counselling and Coaching Psychology

AFTER THIS COURSE YOU COULD...

Upon successful completion, you will be in an ideal position to take the next steps towards a career in areas such as:

- Clinical, forensic, or educational psychology
- Health education and promotion
- Counselling
- Mental health support
- Human resources
- Prison or probation work

MODULE EXAMPLES

- Introduction to Data Analysis
- Foundational Counselling and Coaching Skills
- Counselling Skills: Preparation for Practice
- Development, Brain and Cognition
- Intermediate Counselling Skills
- Individual Differences: Abilities, Personalities, and Measuring Differences
- Advanced Counselling Skills

AFTER THIS COURSE YOU COULD...

Upon successful completion, you will be eligible to apply for individual membership of the British Association for Counselling and Psychotherapy (BACP) and apply for registration, subject to passing the BACP Certificate of Proficiency. You will be qualified to work in areas such as counselling and psychotherapy.

You'll also be in an ideal position to take the next step towards a career in clinical, forensic, or educational psychology, health education and promotion, human resources, and prison or probation work.

SOCIOLOGY

BA (HONS)



Curious about the ways society shapes the world around us? Keen to explore how people, places, and communities connect across local, national, and global contexts? Step into our BA (Hons) Sociology degree and immerse yourself in the study of social life, theory, and practice.

This course blends classic sociological traditions with practical applications of social theory in the communities and environments you experience every day. With a clear focus on people and place, it gives you the freedom to pursue your own interests and shape the course around what matters most to you.

In your third year, you will develop applied research skills through a specialist module led by an expert researcher and a dissertation that allows you to conduct your own investigation. Optional volunteering with local organisations offers the chance to explore applied research in real-world settings, linking your academic learning to practical problems and enhancing your employability.

The degree is built around the University of Cumbria's signature pedagogy of place-based learning. It integrates core principles of teaching, assessment, and reflective practice. You will engage with authentic assessment, digital learning tools, and activities designed to consolidate your understanding of sociology, professionalism, and what it means to be a global citizen. Small class sizes and supportive tutors ensure you have the guidance needed to develop critical thinking, analytical skills, and a portfolio of evidence to translate your learning into future opportunities.

DURATION	LOCATION	UCAS POINTS	UCAS CODE	ADDITIONAL ENTRY REQUIREMENTS
3 years	Lancaster	104–112	S100	GCSE English and Mathematics at grade 4/C or above

MODULE EXAMPLES

- Theorising Social Life
- Exploring Space, Place and Material Place
- Media, Culture and Persuasion
- Poverty, Policy and Place
- Understanding Social Research
- Power and Social Justice

AFTER THIS COURSE YOU COULD...

This course offers a wide range of career opportunities for those with an understanding of social structures and interactions, including:

- education
- social work
- policy development
- local and national government
- NGOs



SCIENCE, FORESTRY AND CONSERVATION



VIEW COURSES



OLIVER ZOOLOGY, BSC (HONS)

There are lots of opportunities to do fieldwork and get outside with nature. The tutors are very helpful with encouraging students to engage in volunteering opportunities in the area, which could no doubt lead to potential jobs in the future.



Accreditations
and Partners



Institute of
Chartered
Foresters



BIOMEDICAL SCIENCE

BSC (HONS)

▲ Integrated Foundation Year (IFY) Available

Dive into the fascinating world of Biomedical Science, where theory and practice come together in our cutting-edge laboratories. Develop the knowledge, skills, and curiosity to thrive in this vital field and make a lasting impact on healthcare.

Apply your theoretical learning through hands-on experience in our industry-standard labs. You will use the same equipment and techniques as professional biomedical scientists, gaining the practical skills and confidence needed for a fulfilling career.

Throughout your studies, you will be guided and inspired by expert tutors with real-world experience in the biomedical field. Our student-centred class environments ensure you receive the individual attention and guidance you need to reach your full potential.

You will also benefit from our strong collaborations with the NHS and industry partners—locally, nationally, and globally—helping you build valuable professional connections and prepare for success in this ever-evolving sector.

MODULE EXAMPLES

- Cell Biology
- Anatomy and Physiology
- Molecular Biology
- Human Genetics
- Infection and Immunity
- Medical Microbiology
- Cellular and Molecular Pathology
- Clinical Biochemistry
- Haematology and Transfusion Science

AFTER THIS COURSE YOU COULD...

Explore a diverse array of career possibilities with our programme opening doors to:

- Biomedical Scientist
- Clinical Scientist
- Doctor through a Postgraduate Programme such as the Pears Cumbria School of Medicine
- Researcher
- Educator

You may also choose to pursue postgraduate study for advanced opportunities in your field.

DURATION	LOCATION	UCAS POINTS	UCAS CODE	ADDITIONAL ENTRY REQUIREMENTS	ACCREDITATIONS
3 years	Carlisle	112–120	C912	32 UCAS points in Biology/Human Physiology; GCSE English, Maths and Biology/Combined Science at grade 4/C or above	Institute of Biomedical Science

ECOLOGY AND WILDLIFE CONSERVATION

BSC (HONS)

+ Available With Year in Industry
▲ Integrated Foundation Year (IFY) Available

If you're passionate about wildlife and committed to protecting our natural world, our Ecology and Wildlife Conservation degree will give you the knowledge and hands-on experience to tackle the global challenges of climate change and biodiversity loss.

Study with us at our Ambleside campus—located in the Lake District National Park, a UNESCO World Heritage site—where you'll have access to exceptional fieldwork and laboratory resources. Learn from passionate, research-active lecturers and gain first-hand experience working with conservation partners.

This course provides over 180 hours of hands-on practical field and lab work to give you ecological, digital, and transferable skills aligned with industry standards.

Throughout this degree, you'll have the opportunity to participate in internships, placements, and volunteer activities with conservation organisations, building networks and skills to succeed in this rapidly growing field. With our support and extensive professional connections, you'll be well-prepared for a fulfilling career in environmental conservation.

MODULE EXAMPLES

- Key Concepts in Conservation Science
- Essentials in Ecology
- Earth Systems
- Ecological Census Techniques
- Genetics and Evolution
- Field Ecology and Wildlife Conservation
- Dissertation
- Ecosystem Management
- Environmental Philosophy, Policy, and Practice

AFTER THIS COURSE YOU COULD...

Explore a diverse array of career possibilities, with our course opening doors to careers in:

- Conservation Management
- Ecological Research
- Environmental Policy
- Wildlife Management
- Habitat Restoration

You may also choose to pursue postgraduate study for advanced opportunities in your field.

DURATION	LOCATION	UCAS POINTS	UCAS CODE	ADDITIONAL ENTRY REQUIREMENTS
3 years	Ambleside	104–120	D510	32 points in Biology, Conservation, Environmental Science or Geography. GCSE English, Maths and Science at grade 4/C or above

ENVIRONMENTAL SCIENCE

BSC (HONS)

▲ Integrated Foundation Year (IFY) Available

Turn your passion for the planet into action and make a real difference with our Environmental Science degree. You will explore the challenge of balancing human activity with the planet's delicate ecosystems, developing the insight and skills needed to drive positive environmental change.

You will be immersed in extensive fieldwork and hands-on practical experiences, using the diverse array of environments on your doorstep. From rural and urban landscapes to protected and designated sites, there's a wide range of spaces waiting to be explored.

In our industry-standard laboratories, you'll hone your practical skills while developing scientific expertise, project management, and teamwork abilities. These experiences prepare you for a wide range of rewarding careers.

Throughout your studies, you will receive personal support from expert academics who share your passion for the environment. They will guide and inspire you with their own research and commitment to educating and protecting our planet.

MODULE EXAMPLES

- Terrestrial Systems
- Aquatic Systems
- Atmospheric Systems
- Natural Resource Use
- Pollution and Monitoring
- Environmental Legislation and Regulation
- Energy and Water Resource Sustainability
- Land Use and Biodiversity Conservation
- Environmental Management Solutions

AFTER THIS COURSE YOU COULD...

Explore a diverse array of career possibilities, with our course opening doors to roles such as:

- Environmental Scientist
- Ecologist
- Environmental Consultant
- Air Pollution Advisor
- Meteorologist

You may also choose to pursue postgraduate study for advanced opportunities in your field.

DURATION	LOCATION	UCAS POINTS	UCAS CODE	ADDITIONAL ENTRY REQUIREMENTS
3 years	Carlisle	104–120	D401	Must have studied at least one from the following subjects at level 3: Biology, Chemistry, Physics, Environmental Science, Applied Science, Geography or Geology. GCSE English and Maths at grade 4/C or above

FOREST MANAGEMENT

BSC (HONS)

Forestry Top-Up Course Available
+ Available With Year in Industry
▲ Integrated Foundation Year (IFY) Available

Get ready to shape and save the future of our environment, tackle critical issues and make a lasting impact on our planet. Learn from world-leading experts how to work with nature, not against it.

You will be based at the National School of Forestry in our inspiring Ambleside campus, nestled in the heart of the Lake District National Park. Your environment will serve as your classroom as you study woodlands and forests.

Under the guidance of leading industry experts, you will be immersed in their dedication to research. You can tap into their extensive network, whilst taking advantage of Cumbria's strong national and global partnerships.

Hone your practical skills through field experiences, conducting personal research and taking part in immersive, hands-on learning. Simultaneously, cultivate industry-relevant business skills that pave the way for a broad spectrum of career opportunities.

MODULE EXAMPLES

- Silviculture
- Woodland Ecology
- Wood Utilisation and Processing
- Managing Forest Operations
- Forest Policy and Governance
- People and Forests
- Forest Plan
- Advanced Silviculture
- Business Skills

AFTER THIS COURSE YOU COULD...

Explore a diverse array of career possibilities, with our course opening doors to roles such as:

- Forest Manager
- Ecologist
- Forest Planner
- Senior Forestry Consultant
- Arborist

You may also choose to pursue postgraduate study for advanced opportunities in your field.

DURATION	LOCATION	UCAS POINTS	UCAS CODE	ADDITIONAL ENTRY REQUIREMENTS	ACCREDITATIONS
3 years	Ambleside	104–120	D500	GCSE Maths at grade 4/C or above	Institute of Chartered Foresters

WOODLAND ECOLOGY AND CONSERVATION

BSC (HONS)

- + Sandwich Placement/ Year in Industry Available
- ▲ Integrated Foundation Year (IFY) Available

Climate change and biodiversity loss are the twin challenges of our time. Become part of the solution by gaining expertise in forest management, biodiversity, and woodland conservation.

Woodlands are unique and precious habitats supporting biodiversity and a suite of ecosystem functions, while holding a central place within our cultural heritage and providing timber and forest products as a critical economic asset. You will transform your passion for woodlands into the practical skills and academic knowledge required to work in forest ecosystems, applying your understanding of woodland ecology and conservation to create a tangible environmental benefit.

Based in the Lake District, our Ambleside campus is home to the National School of Forestry, where you can take advantage of the diverse range of habitats with woodlands that span as far as the eye can see.

Your expert academics are active researchers in forestry, ecology and biodiversity conservation; bringing with them world-class knowledge of the subject which will inspire your learning.

You will spend time in commercial forests, ancient woodlands and unique habitats for conservation, allowing you to experience the inner workings of this profession and bolster your confidence, ready to embark upon a fulfilling career.

MODULE EXAMPLES

- Silviculture
- Woodland Ecology
- Tree of Life
- Geographic Information Systems
- Climate Smart Forestry
- Forest Health and Protection
- Woodland Conservation
- Forest Plan
- Dissertation

AFTER THIS COURSE YOU COULD...

Explore a diverse array of career possibilities, with our course opening doors to roles such as:

- Woodland Ecologist
- Forest Manager
- Forestry Consultant
- Environmental Protection Agent
- Biodiversity Officer

You may also choose to pursue postgraduate study for advanced opportunities in your field.

DURATION	LOCATION	UCAS POINTS	UCAS CODE	ADDITIONAL ENTRY REQUIREMENTS	ACCREDITATIONS
3 years	Ambleside	104–120	D440	GCSE Maths at grade 4/C or above	Institute of Chartered Foresters

ZOOLOGY

BSC (HONS)

- + Sandwich Placement/ Year in Industry Available
- ▲ Integrated Foundation Year (IFY) Available

Turn your passion for animals, wildlife conservation, and the natural world into a fulfilling career with our hands-on Zoology degree.

Our strong connections with a variety of local, national, and global wildlife organisations offer you numerous opportunities. Through our research and partnerships, you will have the chance to engage with local groups such as the Cumbria Wildlife Trust, Tullie House Museum, and the Cumbria Natural History Society.

There is also the opportunity to volunteer with national and international wildlife organisations studying animals such as beavers, brown bears, dolphins, and snow leopards, deepening your knowledge and skills and providing invaluable experience for your CV.

Cumbria is the ideal place to study zoology. The uniquely diverse environments of the county include mountains, moorlands, river valleys, salt marshes, urban habitats, beaches, and rocky shores, all of which are home to a range of species. You will spend a substantial amount of time learning in these environments, putting your zoological knowledge into practice.

Your learning will be guided and nurtured by expert academics who share your passion for animal conservation, behaviour, evolution, and ethics. You will benefit from personal support from your tutors, allowing you to get the most from your degree.

DURATION	LOCATION	UCAS POINTS	UCAS CODE	ADDITIONAL ENTRY REQUIREMENTS
3 years	Carlisle	104–120	4T67	32 points in Biology, Applied Science or Animal Management; GCSE English, Maths and Science at grade 4/C or above



MODULE EXAMPLES

- Vertebrate and Invertebrate Zoology
- Ecology and Environment
- Animal Form and Function
- Animal Conservation Practice
- Zoological Monitoring Techniques
- Animal Behaviour
- British Wildlife
- Professional Skills in Zoology
- Behavioural Ecology

AFTER THIS COURSE YOU COULD...

Explore a diverse array of career possibilities, with our course opening doors to roles such as:

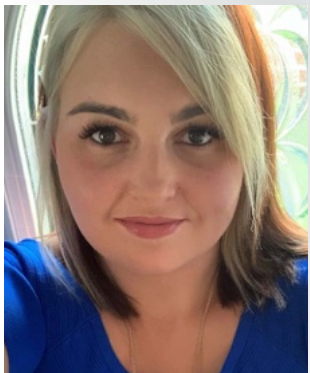
- Wildlife Biologist
- Conservation Officer
- Ecologist
- Animal Behaviourist
- Environmental Consultant
- Wildlife Rehabilitator

You may also choose to pursue postgraduate study for advanced opportunities in your field.

SOCIAL WORK, HEALTH AND SOCIAL CARE



VIEW COURSES



ELEANOR
SOCIAL WORK, BA (HONS)

My practice educator has been invaluable and has really supported me through the harder times on placement. They have also offered extensions and the tutors have done their best to ensure we are supported.



HEALTH AND SOCIAL CARE

BSC (HONS)

▲ Integrated Foundation Year (IFY) Available

The health and social care sector is growing rapidly, creating exciting opportunities for skilled, compassionate professionals who want to make a real difference in people's lives. Our BSc (Hons) Health and Social Care degree will deepen your understanding of practice and policy while supporting your personal and professional development.

With a strong focus on employability, you'll explore cultural values, ethical principles, and contemporary issues that shape modern practice. This will give you the knowledge and confidence to build an impactful career across a diverse range of health and social care settings.

Our lecturers bring a wealth of real-world experience from across the sector, enriching your learning with current insights and best practices. You'll also hear from guest speakers who share their expertise and help you understand the varied needs of the communities you'll work with.

To help prepare you for your future career, our degree has a focus on real-world and simulated real-world applications of topics studied. Simulated learning experiences, using virtual reality, will provide you with a safe environment to develop your confidence and practice and refine your skills.

You'll explore complex ethical and professional dilemmas through case studies based on serious case reviews, as well as develop your critical thinking and decision-making abilities.

DURATION	LOCATION	UCAS POINTS	UCAS CODE	ADDITIONAL ENTRY REQUIREMENTS
3 years	Carlisle, Lancaster	96–112	B711	GCSE English at grade 4/C or above

SOCIAL WORK

BA (HONS)

▲ Health and Social Care Integrated Foundation Year (IFY) Available

A Social Work degree is the gateway to a meaningful career supporting people at every stage of life, and across every community. On this course, approved by Social Work England, our lecturing team brings a wealth of professional practice experience and real-world knowledge to the classroom.

Our team understands how to provide the best development opportunities to ensure you have a happy, healthy, and successful career in this essential profession. This in-house team is complemented by frequent external speakers from local authorities and the voluntary sector, as well as people with lived experience of social work.

As a Social Work student, you will be immersed in a fascinating journey where practical learning workshops are woven together with professional knowledge. We use the latest digital technology alongside physical simulation facilities, such as our mock hospital ward and flat, to enable you to practise home visits. We will help you understand theories in social work and how to apply them to real-world examples of supporting people and promoting equality. You will then take this learning into the community through visits to the local authority and family court.

Alongside this, you will complete 170 days of professional work placements in years 2 and 3. This will allow you to translate your development into the workplace, fully supported by qualified practice educators as you build experience and gain confidence in your chosen profession.

DURATION	LOCATION	UCAS POINTS	UCAS CODE	ADDITIONAL ENTRY REQUIREMENTS
3 years	Carlisle	104–120	L501	Interview, DBS and medical checks required; GCSE English at grade 4/C or above

MODULE EXAMPLES

- Personalisation in Health and Social Care
- Development Through the Life Course
- Social and Political Influences on Policy and Practice
- Introduction to Advancing Mental Health Across the Healthcare Spectrum
- Equality, Diversity and Equity in Practice
- Leadership and Change
- Collaborative Working
- Contemporary Approaches and Fundamental Principles of Safeguarding Across the Lifespan
- Managing Self and Others

AFTER THIS COURSE YOU COULD...

Upon successful completion, you can explore careers in independent living support, respite care, healthcare support in hospitals, and family support work.

This degree is also the perfect stepping stone towards further study to pursue a career in areas such as nursing, radiography, occupational therapy, and social work.

MODULE EXAMPLES

- Law and Social Policy
- Politics, Discrimination and Social Justice
- Effective Work with People with Lived Experience
- Professional Skills 2: Applying Models of Assessment and Intervention in Practice
- Working with Children – Exploring What Works
- Working with Adults – Bringing Alive the Rich Diversity of Work
- Critical Evaluation of Social Work Practice
- Organisational Factors and Leadership in Social Work

AFTER THIS COURSE YOU COULD...

Upon successful completion you'll be qualified to work in a range of settings and specialisms as a fully registered social work professional, including:

- Local authority teams supporting adults and children
- NHS organisations based in the community, as well as in hospitals and police stations
- Voluntary organisations ranging from family support to bereavement care, carers and crisis intervention services, therapeutic support services and people with additional needs

SPORT



VIEW COURSES



JOE SPORT, COACHING AND PHYSICAL EDUCATION, BA (HONS)

Experiencing the degree was a brilliant 3 years of my life. I learnt about all aspects of sport coaching, development and PE and I worked with some fantastic lecturers. This was vital in securing my current job within a Secondary school PE Department.

Sports Scholarships Available

cumbria.ac.uk/applynow

cumbria.ac.uk/opensdays



SPORT, COACHING AND PHYSICAL EDUCATION

BA (HONS)

Top-Up Course Available

▲ Integrated Foundation Year (IFY) Available

If you're passionate about sport, physical education, and helping others reach their full potential, our Sport, Coaching and Physical Education course will give you the knowledge and practical experience to turn that passion into a rewarding career.

You'll explore the theory of physical education, sport and coaching, pedagogy across the education, leisure, and community sectors. Building on this foundation, you'll focus on teaching, coaching and sport development, with full support from our experienced academic team throughout your studies.

Your learning goes far beyond the classroom. You'll take part in practical sessions in our sports hall and performance laboratories, as well as the stunning landscapes of the Lake District. You'll also complete approximately 50 hours of work experience in schools, clubs, and community groups. Our strong partnerships with the sports industry, including professional clubs and national governing bodies, provide valuable opportunities to work with young people in a range of settings.

Employability is at the heart of the degree. You'll have the chance to complete a range of additional qualifications, at no extra cost, that are highly valued by employers and will help you stand out in the competitive sports sector.

MODULE EXAMPLES

- Developing the Practitioner Toolkit
- Principles of Human Movement and Function
- Multi-Skills Development in Physical Education and Sport
- Delivering Sport and the Physical Education Curriculum
- Leadership and Relationships in Sport
- Work-Based Learning
- Independent Investigative Project
- Outdoor and Adventurous Activities
- Club and Coach Development

AFTER THIS COURSE YOU COULD...

Upon successful completion, you will gain Chartered Institute for the Management of Sport and Physical Activity (CIMSPA) accreditation. Our graduates have success pursuing careers in areas such as:

- PE Teaching
- Sport Development
- Event Management
- Performance Analysis
- High-Performance Coaching
- Community Coaching

DURATION	LOCATION	UCAS POINTS	UCAS CODE	ADDITIONAL ENTRY REQUIREMENTS	ACCREDITATIONS
3 years	Lancaster	104–112	C604	DBS check required; GCSE English and Maths at grade 4/C or above	Chartered Institute for the Management of Sport and Physical Activity

SPORT CONDITIONING AND PERFORMANCE ANALYSIS

BSC (HONS)

▲ Integrated Foundation Year (IFY) Available

If you're passionate about sport and driven to help athletes reach their full potential, our Sport Conditioning and Performance Analysis degree is the perfect next step. This course combines science, data and practical application to equip you with the skills to turn performance insights into real-world results.

You will train in our industry-standard facilities while developing specialist expertise in both conditioning and performance analysis. Our strong partnerships with professional sports clubs provide opportunities for a hands-on placement, giving you valuable experience working directly with professional and semi-professional teams and athletes across a range of sports.

To boost your employability, you will also have the opportunity to gain Hudl certification, and upon graduation, you will be eligible to apply for the International Society of Performance Analysis of Sport (ISPAS) Level 1 accreditation, credentials that will set you apart in the competitive world of sport performance.

MODULE EXAMPLES

- Principles of Human Movement and Function
- Introduction to Sport Psychology
- Introduction to Performance Analysis
- Strength and Conditioning for Performance
- Leadership and Relationships in Sport
- Applied Notational Analysis
- Sport Performance Testing and Prescription
- Applied Conditioning and Performance Analysis
- Practitioner Placement

AFTER THIS COURSE YOU COULD...

Upon successful completion, you will be equipped to conduct diagnostic assessments, analyse athletes' fitness, technical performance and tactical play, and design evidence-based training programmes to optimise performance.

These skills will prepare you for roles in performance analysis, strength and conditioning, sports science support, athlete development, professional sports clubs and national governing bodies.

DURATION	LOCATION	UCAS POINTS	UCAS CODE	ADDITIONAL ENTRY REQUIREMENTS	ACCREDITATIONS
3 years	Lancaster	104–112	C612	DBS check required; GCSE English and Maths at grade 4/C or above	Chartered Institute for the Management of Sport and Physical Activity



cumbria.ac.uk/applynow

SPORT REHABILITATION

BSC (HONS)

▲ Integrated Foundation Year (IFY) Available

This course is designed to give you the industry knowledge, skills and enhanced employment prospects to kickstart your career in sport rehabilitation.

Sport Rehabilitators are registered healthcare professionals specialising in musculoskeletal injury assessment, diagnosis, and treatment. You will learn to prevent, examine and treat sports related injuries, while practising in facilities including our rehabilitation clinic, strength and conditioning room, and biomechanics and physiology laboratories. Our tutors are industry professionals who will support you throughout the degree.

Beyond the university setting, you will complete at least 400 hours of work experience, with opportunities to work with professional sports teams and in sports rehabilitation clinics, fitness centres, and the NHS. You will also support ultra-endurance runners taking part in the annual Brathay 10 in 10 (10 marathons in 10 days) event.

You will enhance your CV by completing a range of courses and qualifications, including Rocktape, Pre-Hospital Immediate Care in Sport, and a Strength and Conditioning Trainer qualification endorsed by the Chartered Institute in the Management of Sport and Physical Activity (CIMSPA).

Accredited by the industry leading British Association of Sport Rehabilitators (BASRaT) and in association with the World Federation of Athletic Training and Therapy (WFATT), our course will set you up for success through enhanced national and international employment prospects.

MODULE EXAMPLES

- Sports Massage
- Exercise Techniques and Training
- Pathophysiology and Therapeutic Practice
- Strength and Conditioning for Performance
- Neurodynamics in Sport
- Injury Screening and Prevention
- Manual Therapeutic Techniques

AFTER THIS COURSE YOU COULD...

Upon successful completion, you will be accredited by the British Association of Sport Rehabilitators and Trainers (BASRaT) and Chartered Institute in the Management of Sport and Physical Activity (CIMSPA). You will be able to pursue careers in:

- Professional sports clubs
- Strength and conditioning
- NHS
- Ministry of Defence
- Private sports injury clinics
- Fitness centres
- GP referral schemes

DURATION	LOCATION	UCAS POINTS	UCAS CODE	ADDITIONAL ENTRY REQUIREMENTS	ACCREDITATIONS
3 years	Lancaster	104–112	CB69	DBS check required; GCSE English at grade 4/C or above	British Association of Sport Rehabilitators and Trainers, Chartered Institute in the Management of Sport and Physical Activity

cumbria.ac.uk/opendays

FEES AND FUNDING

When you study at the University of Cumbria, you are investing in your future. We work hard to ensure that your degree is worth every penny by helping you graduate from university career-ready.

Here's how it works

- You don't have to pay tuition fees up front. You study now and pay later. This means that repayments are based on what you earn, not what you owe.
- You only start repaying once you are earning over the repayment threshold. Even then, it comes straight out of your wage automatically, so there are no messy payment arrangements to make. To cover your living costs - including accommodation while you study with us - you can apply for maintenance loan support. The exact amount you receive will depend on your household income and whether you live away from home.
- There are additional grants available for students with children, dependent adults, or a disability. You can check your eligibility for these using the student finance calculator.

Details of funding are published by Student Finance England and the equivalent agencies in Wales, Scotland, and Northern Ireland. You should check their websites for updates and apply online as soon as possible, as well as checking the University of Cumbria website nearer your start date for the latest information.

Maintenance loans are repaid in the same way as your tuition fees; the repayment terms and conditions may vary depending on the funding body.

For full information, go to: gov.uk/student-finance

New Lifelong Learning Entitlement (LLE)

From September 2026, students will be able to apply for Lifelong Learning Entitlement (LLE) funding for courses and modules starting from January 2027 onwards.

The LLE will transform the post-18 student finance system in England to create a single funding system. It will replace higher education (HE) student finance loans and advanced learner loans for level 4, 5 and 6 qualifications.

This means the LLE allows you to develop new skills and gain new qualifications at a time that is right for you. The LLE loan can fund full courses at level 4 to 6, such as degrees, technical qualifications, and designated distance-learning and online courses, amongst others.

For more information, go to studentfinance.campaign.gov.uk/lifelong-learning-entitlement



BURSARIES & SCHOLARSHIPS

At the University of Cumbria, we think it's important that everyone has the opportunity to study, regardless of their financial background. That's why we offer a range of awards and bursaries to support you. For full information on bursaries and scholarships, see cumbria.ac.uk/bursaries

You can also contact us for further information at enquirycentre@cumbria.ac.uk or by calling 01228 588 588.

For more information on fees and finances, visit cumbria.ac.uk/study/student-finance

RESEARCH INFORMED TEACHING

The research conducted here at the University of Cumbria tackles some of the biggest challenges facing society. From sustainability and environmental management to wellbeing, health, and social justice, our research is having a positive impact across our region and beyond.

Our curriculum is informed and enriched by the excellent research and knowledge exchange activities led by our academics, who regularly work with our students to address these challenges and find innovative solutions.

Students from Geography, Zoology, Wildlife Media, and Creative Practice joined a Turing Scheme-funded Indian Himalayan research project to develop an open-access database improving flood resilience, working with partners from GBP-NIHE and the University of Delhi.

Physiotherapy students have presented their research alongside their course tutors at the Chartered Society of Physiotherapy Annual Conference in Birmingham, showcasing their focus on practice-oriented investigation as well as the continued support for students as emerging healthcare practitioners.

Research at our Institute of Health is advancing clinical image interpretation, digital health, and community wellbeing to inform the training of medical imaging and healthcare students. Key projects include a UKRI-funded dementia technology initiative and a National Institute for Health and Care Research-backed programme improving health outcomes for vulnerable families in West Cumbria.

Making an Impact

54% of our research impact was rated as internationally excellent in the Research Excellence Framework 2021. This means our students learn and develop their careers whilst working alongside academics who make a positive difference to society.

Research is a key part of our mission: to inspire and equip our students, communities and environment with the resources they need to thrive.

For more insights into our research, read our Research Knowledge Exchange blog at www.cumbria.ac.uk/blog/articles/research. You can also learn more from our recent Research Spotlight Podcasts - scan the QR code on the opposite page to listen.

Listen Here



NO.1
UNIVERSITY IN THE UK FOR
OVERALL PGR STUDENT
EXPERIENCE (2025 POSTGRADUATE
RESEARCH EXPERIENCE SURVEY)

THE SMALL PRINT

Disclaimer

This prospectus aims to answer your questions about life and academic provision on offer at the University of Cumbria, and every effort has been taken to ensure the prospectus is accurate at the time of printing. Please check the website before applying as this will contain the latest information on the University of Cumbria and the courses that we offer.

In exceptional circumstances, it can be necessary to make changes to the programmes and provision advertised (for example, to meet a Professional Body's changing requirements). In such instances, we will take all reasonable steps to minimise disruption and we will ensure that applicants are notified of any material changes as early as possible.

There may be occasions when the university withdraws or suspends recruitment to a course. In such circumstances, we will advise applicants as early as possible, including suitable alternative options that may be available.

For a complete list of courses currently on offer from the University of Cumbria, please check our website www.cumbria.ac.uk

Contextual data and information

We recognise that not everyone has the same educational journey and that some students have to overcome challenges to achieve their grades, which is why we use contextual admissions to make sure that we are accessible to everyone who has the potential to succeed. Qualifications and grades are important, but they will be considered alongside other information, such as caring responsibilities and where an applicant lives, during our offer making. Individuals that have extenuating circumstances which have impacted on their educational journey will also receive special consideration.

More information about our use of contextual information can be found at www.cumbria.ac.uk/applicants/entry-requirements

Green Impact Scheme

As part of our ongoing commitment to sustainability, we have signed up to take part in an exciting programme led by the National Union of Students called the Green Impact Scheme. Green Impact Universities and Colleges is an environmental accreditation scheme which helps people improve their working environments and positively impact the lives of their students whilst gaining recognition for their efforts. The scheme has worked with more than 50 universities and colleges, over 100 Students' Unions, and ever-increasing numbers of community organisations.

Waste and Recycling

The University of Cumbria is dedicated to substantially decreasing the amount of waste it sends to landfill by reducing waste, reusing where possible, and recycling when necessary.

We aim to divert over 90% of our waste from landfill. To achieve this, we encourage all our students and staff to be conscientious about recycling during their time at the university. To support our environmental target, we are pleased to be working with a local business, Cumbria Waste Group, for our main site waste management services. CWG were appointed to help improve the amount of waste being recycled by separating at source. The university now segregates into three streams — paper and card, co-mingled (plastic, tins and glass), and non-recyclable. CWG is responsible for emptying over 100 bins each week across our four main campus sites in Carlisle, Lancaster, and Ambleside.

The University of Cumbria is a licensed waste carrier. Our licence number is CBDL135305.

This allows us to carry waste directly to waste recycling or disposal sites, or between our main campus and ancillary sites.

Contact Information

If you have any questions about Cumbria, our courses, campuses, or facilities, please contact us.

Phone: 01228 588 588
Email: enquirycentre@cumbria.ac.uk

Campus details

Ambleside Campus

University of Cumbria, The Barn, Rydal Road, Ambleside, Cumbria, LA22 9BB

Barrow-in-Furness Campus

University of Cumbria, Buccleuch Dock Road, Barrow-in-Furness, Cumbria, LA14 2SW

Carlisle Brampton Road Campus

University of Cumbria, Brampton Road, Carlisle, Cumbria, CA3 9AW

Carlisle Fusehill Street Campus

University of Cumbria, Fusehill Street, Carlisle, Cumbria, CA1 2HH

Lancaster Campus

University of Cumbria, Bowerham Road, Lancaster, Lancashire, LA1 3JD

London Campus

University of Cumbria, 58 E India Dock Road, London, E14 6JE

COURSE DIRECTORY

ENGINEERING	DURATION	LOCATION	UCAS POINTS	UCAS CODE	ADDITIONAL ENTRY REQUIREMENTS
Mechanical Engineering, BEng (Hons)	3 years	Barrow	104–120	B117	To include 32 points from one of; Design and Technology, Maths, Further Maths, Statistics, Physics Chemistry, Computer Science or Electronics. It would be advantageous to have studied two of these subjects. GCSE Maths, English and Science (or STEM) at grade C/4 or above. Functional Skills English and Maths are also accepted. We accept a full range of qualifications that carry UCAS points, including A-levels, BTECs and T-levels.
Mechanical Engineering, BEng (Hons) (With Year in Industry and IFY)	5 years	Barrow	48	B116	Must have studied Design and Technology, Maths, Further Maths, Statistics, Physics Chemistry, Computer Science or Electronics at level 3. GCSE English, Maths, Science or STEM at 4/C or above. Functional Skills English and Maths are also accepted.
Mechanical Engineering, BEng (Hons) (With IFY)	4 years	Barrow	48	B115	Must have studied Design and Technology, Maths, Further Maths, Statistics, Physics Chemistry, Computer Science or Electronics at level 3. GCSE English, Maths, Science or STEM at 4/C or above. Functional Skills English and Maths are also accepted.
Mechanical Engineering, BEng (Hons) (With Year in Industry)	4 years	Barrow	104–120	B118	To include 32 points from one of; Design and Technology, Maths, Further Maths, Statistics, Physics Chemistry, Computer Science or Electronics. It would be advantageous to have studied two of these subjects. GCSE Maths, English and Science (or STEM) at grade 4/C or above. Functional Skills English and Maths are also accepted. We accept a full range of qualifications that carry UCAS points, including A-levels, BTECs and T-levels.
BUSINESS	DURATION	LOCATION	UCAS POINTS	UCAS CODE	ADDITIONAL ENTRY REQUIREMENTS
Accounting and Finance, BSc (Hons) (subject to validation)	3 years	Carlisle	104–112	N440	GCSE English and Maths at grade 4/C or above
Accounting and Finance, BSc (Hons) (With IFY) (subject to validation)	4 years	Carlisle	48	N441	GCSE English and Maths at grade 4/C or above
Artificial Intelligence and Business Analytics, BSc (Hons) (subject to validation)	3 years	Barrow, Carlisle, Lancaster, London	104–112	N442	GCSE English and Maths at grade 4/C or above
Artificial Intelligence and Business Analytics, BSc (Hons) (With IFY) (subject to validation)	4 years	Barrow, Carlisle, Lancaster, London	48	N443	GCSE English and Maths at grade 4/C or above

BUSINESS	DURATION	LOCATION	UCAS POINTS	UCAS CODE	ADDITIONAL ENTRY REQUIREMENTS
Business Management, BA (Hons) (subject to validation)	3 years	Carlisle, Lancaster, London	104–112	N100	
Business Management, BA (Hons) Top-Up (subject to validation)	1 year	Lancaster		N140	Successful completion of a related Foundation degree or HND
Business Management, BA (Hons) (With IFY) (subject to validation)	4 years	Lancaster, Carlisle,	48	N101	
Global Business Management, BA (Hons) Top-Up	1 year	London		N321	Successful completion of a related Foundation degree or HND
International Business Management, BA (Hons) (subject to validation)	3 years	Lancaster	104–112	N120	
International Business Management, BA (Hons) (subject to validation) Top-Up	1 year	Lancaster		N121	Successful completion of a related Foundation degree or HND
Project Management, BSc (Hons) Top-Up	1 year	Carlisle, Online		N216	Successful completion of a related Foundation degree or HND
Tourism and Visitor Economy Management, BA (Hons)	3 years	Ambleside	104–112	S102	
COMPUTER SCIENCE	DURATION	LOCATION	UCAS POINTS	UCAS CODE	ADDITIONAL ENTRY REQUIREMENTS
Computer Science, BSc (Hons)	3 years	Barrow, Lancaster	112–120	B111	32 points in Maths or STEM. GCSE English, Maths and Science (or STEM) at 4/C or above
Computer Science, BSc (Hons) (With Sandwich Placement)	4 years	Barrow, Lancaster	112–120	B112	32 points in Maths or STEM. GCSE English, Maths and Science (or STEM) at 4/C or above
CREATIVE AND MEDIA ARTS	DURATION	LOCATION	UCAS POINTS	UCAS CODE	ADDITIONAL ENTRY REQUIREMENTS
Animation and Visual Effects, BA (Hons)	3 years	Carlisle	96–112	W286	
Animation and Visual Effects, BA (Hons) (With IFY) (subject to validation)	4 years	Carlisle	48	W300	
Film and Television, BA (Hons)	3 years	Carlisle	104–120	P311	
Film and Television, BA (Hons) (With IFY)	4 years	Carlisle	48	P314	
Fine Art, BA (Hons)	3 years	Carlisle	104–112	W100	All places are offered subject to successful portfolio and artist conversation
Fine Art, BA (Hons) (With IFY)	4 years	Carlisle	48	W108	All places are offered subject to successful portfolio and artist conversation

CREATIVE AND MEDIA ARTS	DURATION	LOCATION	UCAS POINTS	UCAS CODE	ADDITIONAL ENTRY REQUIREMENTS
Games Design, BA (Hons)	3 years	Carlisle	104–112	W282	
Games Design, BA (Hons) (With IFY)	4 years	Carlisle	48	W283	
Graphic Design, BA (Hons)	3 years	Carlisle	96–112	W210	All places are offered subject to successful portfolio and artist conversation
Graphic Design, BA (Hons) (With IFY)	4 years	Carlisle	48	W215	All places are offered subject to successful portfolio and artist conversation
Illustration, BA (Hons)	3 years	Carlisle	104–112	W220	All places are offered subject to successful portfolio and artist conversation
Illustration, BA (Hons) (With IFY)	4 years	Carlisle	48	W222	All places are offered subject to successful portfolio and artist conversation
Photography, BA (Hons)	3 years	Carlisle	104–112	W641	All places are offered subject to successful portfolio and artist conversation
Photography, BA (Hons) (With IFY)	4 years	Carlisle	48	W640	All places are offered subject to successful portfolio and artist conversation
Wildlife Media, BA (Hons)	3 years	Carlisle	104–12	CW36	All places are offered subject to successful portfolio and artist conversation
Wildlife Media, BA (Hons)(With IFY)	4 years	Carlisle	48	CW37	All places are offered subject to successful portfolio and artist conversation
EDUCATION AND TEACHING	DURATION	LOCATION	UCAS POINTS	UCAS CODE	ADDITIONAL ENTRY REQUIREMENTS
Education Studies, BA (Hons) Top-Up	1 year	Online		X307	Successful completion of a DipHE in relevant subject. GCSE English at 4/C or above. DBS and medical checks required
Education Studies with Early Years, BA (Hons) Top-Up	1 year	Online		X308	Successful completion of a DipHE in relevant subject. GCSE English at 4/C or above. DBS and medical checks required
Primary and Early Years Education (3–11) with QTS, BA (Hons)	3 years	Lancaster, London, Carlisle	112–120	X124	Interview, DBS and medical checks required; GCSE English, Maths and Science at grade 4/C or above
Primary Education (5–11): Inclusion with SEND with QTS, BA (Hons)	3 years	Lancaster	112–120	X126	Interview, DBS and medical checks required; GCSE English, Maths and Science at grade 4/C or above

HEALTHCARE PROFESSIONS	DURATION	LOCATION	UCAS POINTS	UCAS CODE	ADDITIONAL ENTRY REQUIREMENTS
Diagnostic Radiography, BSc (Hons)	3 years	Carlisle, Lancaster	112–120	B821	Interview, DBS and medical checks required; GCSE English, Maths and Physics or Combined Science at grade 5/C or above
Occupational Therapy, BSc (Hons)	3 years	Carlisle, Lancaster	104–120	B920	Interview, DBS and medical checks required; GCSE English at grade 4/C or above
Paramedic Science, BSc (Hons)	3 years	Lancaster	112–120	B780	Full UK Driving Licence; Interview, DBS and medical checks required; A-level in Natural or Social Science; GCSE English, Maths and Science at grade 4/C or above achieved at point of application
Physiotherapy, BSc (Hons)	3 years	Carlisle	120–128	B160	Interview, DBS and medical checks required; GCSE English, Maths and Biology/Combined Science at grade 4/C or above
Midwifery, BSc (Hons)	3 years	Carlisle, Lancaster	112–128	B720	Interview, DBS and medical check required; GCSE English and Maths at grade 4/C or above, Level 3 in Biology or PE is preferred
Nursing Associate, FdSc	2 years	Carlisle, Lancaster	48	B750	Interview, DBS and medical checks required; NVQ level 3 may be considered in a relevant subject as determined by course leader; GCSE English and Maths at grade 4/C or above
Nursing/Registered Nurse: Adult Nursing, BSc (Hons)	3 years	Carlisle, Lancaster, Barrow	96–112	B700	Interview, DBS and medical checks required; GCSE English and Maths at grade 4/C or above
Nursing/Registered Nurse: Children's Nursing, BSc (Hons)	3 years	Carlisle, Lancaster	104–112	B730	Interview, DBS and medical checks required; GCSE English and Maths at grade 4/C or above
Nursing/Registered Nurse: Learning Disabilities Nursing, BSc (Hons)	3 years	Carlisle, Lancaster	96–112	B763	Interview, DBS and medical checks required; GCSE English and Maths at grade 4/C or above
Nursing/Registered Nurse: Mental Health Nursing, BSc (Hons)	3 years	Carlisle, Lancaster	104–112	B760	Interview, DBS and medical checks required; GCSE English and Maths at grade 4/C or above
Pre-Hospital Emergency Care, Certificate HE	1 Year	South West England, Blended Learning	112–120	B782	Interview, DBS and medical checks required; GCSE English and Maths at grade 4/C or above
LAW AND CRIMINOLOGY	DURATION	LOCATION	UCAS POINTS	UCAS CODE	ADDITIONAL ENTRY REQUIREMENTS
Criminology and Forensic Investigation, BSc (Hons)	3 years	Carlisle	104–112	L617	
Criminology and Forensic Investigation, BSc (Hons) (With IFY)	4 Years	Carlisle	48	L618	
Law, LLB (Hons)	3 years	Carlisle, Lancaster	104–120	M100	

LAW AND CRIMINOLOGY	DURATION	LOCATION	UCAS POINTS	UCAS CODE	ADDITIONAL ENTRY REQUIREMENTS
Law, LLB (Hons) (With IFY)	4 years	Carlisle, Lancaster	48	M101	
OUTDOORS AND GEOGRAPHY	DURATION	LOCATION	UCAS POINTS	UCAS CODE	ADDITIONAL ENTRY REQUIREMENTS
Geography, BSc (Hons)	3 Years	Ambleside	104–120	F810	32 points in Geography or Environmental Science. GCSE English, Maths and Science at grade 4/C or above
Geography, BSc (Hons) (With IFY)	4 Years	Carlisle/ Ambleside	48	F811	Must have studied A-level Geography or Environmental Science; GCSE English, Maths and Biology or Combined Science at grade 4/C or above
Outdoor Adventure and Environmental Studies, BSc (Hons)	3 Years	Ambleside	104–120	X300	
Outdoor Adventure and Environmental Studies, BSc (Hons) (With IFY)	4 Years	Carlisle / Ambleside	48	X400	
Outdoor Adventure Education, BA (Hons) (subject to validation)	3 Years	Ambleside	104–120	X401	
Outdoor Adventure Education, BA (Hons) (With IFY) (subject to validation)	4 Years	Carlisle / Ambleside	48	X402	
SECURITY INTELLIGENCE	DURATION	LOCATION	UCAS POINTS	UCAS CODE	ADDITIONAL ENTRY REQUIREMENTS
Intelligence, Cyber and National Security Studies, BSc (Hons) (subject to validation)	3 years	Carlisle	104–112	N444	
Intelligence, Cyber and National Security Studies, BSc (Hons) (With IFY) (subject to validation)	4 years	Carlisle	48	N445	
PSYCHOLOGY	DURATION	LOCATION	UCAS POINTS	UCAS CODE	ADDITIONAL ENTRY REQUIREMENTS
Psychology, BSc (Hons)	3 years	Carlisle	104–120	C800	
Psychology, BSc (Hons) (With IFY)	4 years	Carlisle	48	CC80	
Psychology with Counselling and Psychotherapy, BSc (Hons)	3 years	Carlisle	96–112	C802	DBS check required
Psychology with Counselling and Psychotherapy, BSc (Hons) (With IFY)	4 years	Carlisle	48	C803	DBS check required
Sociology, BA (Hons)	3 Years	Lancaster	104–112	S100	GCSE English and Maths at grade 4/C or above
SCIENCE, FORESTRY AND CONSERVATION	DURATION	LOCATION	UCAS POINTS	UCAS CODE	ADDITIONAL ENTRY REQUIREMENTS
Applied Chemistry, BSc (Hons) (Top Up)	2 years (part-time)	Carlisle		Apply Direct	Successful completion of a related Foundation degree or HND

SCIENCE, FORESTRY AND CONSERVATION	DURATION	LOCATION	UCAS POINTS	UCAS CODE	ADDITIONAL ENTRY REQUIREMENTS
Biomedical Science, BSc (Hons)	3 years	Carlisle	112–120	C912	32 points in Biology/Human Physiology; GCSE English, Maths and Science at grade 4/C or above
Biomedical Science, BSc (Hons) (With IFY)	4 years	Carlisle	48	C913	GCSE English, Maths and Science at grade 4/C or above
Ecology and Wildlife Conservation, BSc (Hons)	3 years	Ambleside	104–120	D510	32 UCAS points in Biology, Conservation, Environmental Science or Geography. GCSE English, Maths and Science at grade 4/C or above
Ecology and Wildlife Conservation, BSc (Hons) (With Sandwich Placement)	4 years	Ambleside	104–120	D511	32 UCAS points in Biology, Conservation, Environmental Science or Geography. GCSE English, Maths and Science at grade 4/C or above
Ecology and Wildlife Conservation, BSc (Hons) (With IFY)	4 years	Carlisle/ Ambleside	48	D512	Must have studied Biology, Applied Science, Conservation, Environmental Science or Geography at level 3. GCSE English, Maths and Science at 4/C or above
Ecology and Wildlife Conservation, BSc (Hons) (With IFY and Sandwich Placement)	5 years	Carlisle/ Ambleside	48	D513	Must have studied Biology, Applied Science, Conservation, Environmental Science or Geography at level 3. GCSE English, Maths and Science at 4/C or above
Environmental Science, BSc (Hons)	3 years	Carlisle	104–120	D401	Level 3 Biology, Chemistry, Physics, Environmental Science, Applied Science, Geography or Geology. GCSE English and Maths at grade 4/C or above
Environmental Science, BSc (Hons) (With IFY)	4 years	Carlisle	48	D400	
Forestry, BSc (Hons)-Top Up	1 year	Ambleside		D501	Successful completion of a related Foundation degree or HND
Forest Management, BSc (Hons)	3 Years	Ambleside	104–120	D500	GCSE Maths at grade 4/C or above
Forest Management, BSc (Hons) (With Sandwich Placement)	4 Years	Ambleside	104–120	D504	GCSE Maths at grade 4/C or above
Forest Management, BSc (Hons) (With IFY)	4 Years	Carlisle/ Ambleside	48	D506	GCSE Maths at grade 4/C or above
Woodland Ecology and Conservation, BSc (Hons)	3 years	Ambleside	104–120	D440	GCSE Maths at grade 4/C or above
Woodland Ecology and Conservation, BSc (Hons) (With IFY)	4 years	Carlisle/ Ambleside	48	D505	GCSE Maths at grade 4/C or above
Woodland Ecology and Conservation, BSc (Hons) (With Sandwich Placement)	4 years	Ambleside	104–120	D502	GCSE Maths at grade 4/C or above
Zoology, BSc (Hons)	3 years	Carlisle	104–120	4T67	Must have studied Biology, Applied Science or Animal Management at level 3. GCSE English, Maths and Science at grade 4/C or above

SCIENCE, FORESTRY AND CONSERVATION	DURATION	LOCATION	UCAS POINTS	UCAS CODE	ADDITIONAL ENTRY REQUIREMENTS
Zoology, BSc (Hons) (With IFY)	4 years	Carlisle	48	C300	Must have studied Biology or Applied Science at Level 3; GCSE English, Maths and Science at grade 4/C or above
Zoology, BSc (Hons) (With Sandwich Placement)	4 years	Carlisle	104–120	C301	Must have studied Biology, Applied Science or Animal Management at level 3. GCSE English, Maths and Science at grade 4/C or above
SOCIAL WORK, HEALTH AND WELLBEING	DURATION	LOCATION	UCAS POINTS	UCAS CODE	ADDITIONAL ENTRY REQUIREMENTS
Health and Social Care, BSc (Hons)	3 Years	Carlisle, Lancaster	96–112	B711	GCSE English at grade 4/C or above
Health and Social Care, BSc (Hons) (With IFY)	4 Years	Carlisle, Lancaster	48	B710	GCSE English at grade 4/C or above
Social Work, BA (Hons)	3 Years	Carlisle	104–120	L501	Interview, DBS and medical checks required; GCSE English at grade 4/C or above
SPORT	DURATION	LOCATION	UCAS POINTS	UCAS CODE	ADDITIONAL ENTRY REQUIREMENTS
Sport, Coaching and Physical Education, BA (Hons)	3 years	Lancaster	104–112	C604	DBS check required; GCSE English and Maths at grade 4/C or above
Sport, Coaching and Physical Education, BA (Hons) (With IFY)	4 years	Lancaster	48	C605	DBS check required; GCSE English and Maths at grade 4/C or above
Sport, Coaching and Physical Education, BA (Hons) Top-Up	1 year	Lancaster		C603	Successful completion of a related Foundation degree or Higher National Diploma (HND); GCSE English and Maths at grade 4/C or above
Sport Conditioning and Performance Analysis, BSc (Hons)	3 years	Lancaster	104–112	C612	DBS check required; GCSE English and Maths at grade 4/C or above
Sport Conditioning and Performance Analysis, BSc (Hons) (IFY)	4 years	Lancaster	48	C114	DBS check required; GCSE English and Maths at grade 4/C or above
Sport and Exercise Therapy, BSc (Hons) Top-Up	1 Year	Lancaster		C615	DBS check required; Successful completion of a related Foundation degree or Higher National Diploma (HND)
Sport Rehabilitation, BSc (Hons)	3 years	Lancaster	104–112	CB69	DBS check required; GCSE English at grade 4/C or above
Sport Rehabilitation BSc (Hons) (With IFY)	4 years	Lancaster	48	C630	DBS check required; GCSE English at grade 4/C or above

ENGINEERING		
Mechanical Engineering	58, 146	
BUSINESS		
Accounting and Finance	62, 146	
Artificial Intelligence and Business Analytics	63, 146	
Business Management	55, 64, 147	
Global Business Management Top-Up	55, 147	
International Business Management	55, 66, 147	
Project Management Top-Up	55, 147	
Tourism and Visitor Economy Management	55, 67, 147	
COMPUTER SCIENCE		
Computer Science	70, 147	
CREATIVE AND MEDIA ARTS		
Animation and Visual Effects	74, 147	
Film and Television	75, 147	
Fine Art	76, 147, 148	
Games Design	78, 148	
Graphic Design	79, 148	
Illustration	80, 148	
Photography	82, 148	
Wildlife Media	83, 148	
EDUCATION AND TEACHING		
Education Studies Top-Up	55, 148	
Primary and Early Years Education (3-11) with QTS	86, 148	
Primary Education (5-11): Inclusion with SEND	87, 148	
HEALTHCARE PROFESSIONS		
Diagnostic Radiography	90, 149	
Occupational Therapy	92, 149	
Paramedic Science	93, 149	
Physiotherapy	94, 149	
Midwifery	95, 149	
Nursing Associate	96, 149	
Nursing: Adult Nursing	97, 149	
Nursing: Children's Nursing	98, 149	
Nursing: Learning Disabilities Nursing	99, 149	
Nursing: Mental Health Nursing	100, 149	
Pre Hospital Emergency Care	101, 149	

LAW AND CRIMINOLOGY	
Criminology and Forensic Investigation	104, 149
Law	105, 149
OUTDOORS AND GEOGRAPHY	
Geography	108, 150
Outdoor Adventure and Environmental Studies	109, 150
Outdoor Adventure Education	111, 150
SECURITY INTELLIGENCE	
Intelligence, Cyber and National Security Studies	114, 150
PSYCHOLOGY AND SOCIOLOGY	
Psychology	118, 150
Psychology with Counselling and Psychotherapy	119, 150
Sociology	120, 150
SCIENCE, FORESTRY AND CONSERVATION	
Applied Chemistry Top-Up	55, 150
Biomedical Science	124, 151
Ecology and Wildlife Conservation	125, 151
Environmental Science	126, 151
Forest Management	127, 151
Forestry Top-Up	55, 151
Woodland Ecology and Conservation	128, 151
Zoology	129, 151, 152
SOCIAL WORK, HEALTH AND SOCIAL CARE	
Health and Social Care	132, 152
Social Work	133, 152
SPORT	
Sport, Coaching and Physical Education	136, 152
Sport Conditioning and Performance Analysis	137, 152
Sport and Exercise Therapy Top-Up	55, 152
Sport Rehabilitation	139, 152



University of
CUMBRIA

UCAS TARIFF

We present our offers as UCAS points to keep things simple. This shows what grades you might need at A Level to meet your course entry requirements. If you've earned points from different qualifications, you can easily check your score using the UCAS Tariff Calculator on the UCAS website.

A LEVEL

Grade	Points
A*	56
A	48
B	40
C	32
D	24
E	16

A*A*A*	168
A*A*A	160
A*AA	152
AAA	144
AAB	136
ABB	128
BBB	120
BBC	112
BCC	104
CCC	96

BTEC EXTENDED DIPLOMA

Grade	Points
D*D*D*	168
D*D*D	160
D*DD	152
DDD	144
DDM	128
DMM	112
MMM	96
MMP	80
MPP	64
PPP	48

JOIN US AT AN OPEN DAY



SUMMER 2026

6 June – Carlisle Brampton Road

20 June – Carlisle Fusehill Street

26 June – Barrow-in-Furness

27 June – Lancaster

1 July – London

4 July – Ambleside

SCAN THE QR CODE TO BOOK OR VISIT

CUMBRIA.AC.UK/OPENDAYS

