



#LOVEYOURSTORY



University of  
**CUMBRIA**

# **YOUR STORY STARTS HERE**

**2024 UNDERGRADUATE PROSPECTUS**

**CUMBRIA.AC.UK**



#LOVEYOURSTORY

# LOVE YOUR STORY AT CUMBRIA

Stories define us. Very soon, you'll be starting the next chapter of your story, a chapter that is uniquely your own. No one else has your thoughts, experiences, dreams, hopes and fears. In this next chapter, you'll meet life-long friends, have amazing experiences and make new stories; stories that you'll still be talking about in 40 years. Stories that belong between you and the University of Cumbria.

But what makes the best story? It's the story YOU love the most. Maybe it'll be when you meet your new flatmate, the first time you get a high mark on an assessment, when you watch the sunrise over Lake Windermere, or when you graduate. It's what's important to you that matters. Not how many likes you get on Insta, or how many views you get on TikTok. It's about you, loving your story.

At Cumbria, we want to help you create stories that you love, that you'll carry on loving forever. Stories of pursuing your passions, of opportunities beckoning you into new adventures, and of helping hands supporting you through the challenging times, as well as the good ones, to get you where you want to be. That's why we're here to tell you about what we offer, so that you can begin to #LoveYourStory with the University of Cumbria.

RANKED  
5TH IN THE  
UK FOR  
PRODUCING  
CEOs

1ST  
IN THE NORTH WEST  
FOR QUALITY EDUCATION\*

UK'S ONLY CAMPUS SET IN A NATIONAL PARK†



RATED 4 STARS ACCORDING TO  
1,419 REVIEWS ON WHATUNI.COM

1ST IN THE NORTH WEST  
FOR RECENT GRADUATES IN  
EMPLOYMENT OR FURTHER  
EDUCATION (97%)

RANKED  
1ST  
IN THE  
NORTH  
WEST FOR  
LAW^

\* SDG 4: THE Impact Rankings, 2020 \* Hitachi Capital Finance, July 2021 ▲ Guardian League Tables, 2022  
† greatbritishmag.co.uk + HESA Graduate Outcomes 2023



# CONTENTS

About Us	02	Need to Knows	74
Our Facts & Stats	03	Fees & Funding	74
Contents	05	Bursaries & Scholarships	75
Open Days	06	Types of Undergraduate Study	76
Future Developments	10	Qualification Levels	77
Student Support	12	Be Global	79
Health & Wellbeing	12	Our Locations	80
Making Friends	12	Carlisle	83
Career Support	14	Lancaster	85
Money Advice & Financial Support	15	Ambleside	87
Library Services	15	Barrow & Workington	89
Chaplaincy	15	London	91
Your Home at Cumbria	16	Our Institutes	95
A Day in the Life	22	Our Research Impact	95
Students' Union	25	The Small Print	96
Sports, Fitness & Activities	27	Course Index	99
Our Courses	28		
Course Listings	30-73		

CONTENTS

CONTENTS

# OPEN DAYS

Picture this: you've just got onto campus and instantly get a feeling - something you've not had before. Suddenly, you know this is the place you belong.

Experience your University of Cumbria Open Day! We do our Open Days a little differently. We don't fill the day with gimmicks and marketing pitches, instead, we give you the chance to really get to know us and to get a feel for what your life at Cumbria could really be like.

We have dates available throughout the summer and autumn, and you can choose from both virtual and face-to-face options.

Our Open Days offer interactive, hands-on experiences such as workshops, demonstrations and campus and accommodation tours, with current students on hand for you to chat to. You will also have the opportunity to talk to your course tutor and staff from our Student Support teams, including Finance, Admissions and Accommodation.

Start your story at one of our Open Days.



SCAN THE QR CODE TO BOOK OR VISIT  
CUMBRIA.AC.UK/OPENDAYS

- 30 September** - Lancaster
- 7 October** - Ambleside
- 11 October** - Barrow-In-Furness
- 14 October** - Carlisle Fusehill Street
- 18 October** - Carlisle Brampton Road
- 18 October** - London
- 4 November** - Lancaster
- 11 November** - Ambleside
- 15 November** - London
- 18 November** - Carlisle Fusehill Street
- 21 November** - Barrow-In-Furness

- 25 November** - Carlisle Brampton Road
- 28 February** - Carlisle Fusehill Street
- 28 February** - Lancaster
- 01 March** - Ambleside
- 06 March** - Carlisle Brampton Road
- 17 April** - London
- 15 June** - Carlisle Brampton Road
- 21 June** - Carlisle Fusehill Street
- 26 June** - London
- 28 June** - Lancaster
- 29 June** - Ambleside



Watch our Open Day video.



# LOVE YOUR STORY AT THE UNIVERSITY OF CUMBRIA



LOVE YOUR STORY

LOVE YOUR STORY



#LOVEYOURSTORY



## IMRAN'S STORY. BA (HONS) - PRIMARY AND EARLY YEARS EDUCATION (3-11) WITH QTS

I'm now a head teacher, working for Norfolk County Council. I love making a positive difference to the lives of all the children I teach and being able to make decisions that lead to positive outcomes for the children's well-being and learning.

# FUTURE DEVELOPMENTS

## BARROW LEARNING QUARTER

Cumbria is home to a thriving advanced manufacturing hub, with our Barrow campus set to build on this by delivering degree programs that are aligned with the needs of local employers.

With the increasing integration of computer technologies and automation in the workplace, there is growing demand for skilled manufacturing engineers in the region. To meet this need, the University of Cumbria is introducing degree-level programmes in advanced manufacturing, engineering, computer science and business at our brand-new Barrow campus.

Our Barrow campus will be positioned at the heart of the Barrow Learning Quarter, a borough-wide programme of seven innovative projects that will transform the area and ensure it thrives as a great place to live, work and visit. In recognition of Barrow's historic and ongoing involvement in the marine and defence industry, the new campus building will echo the shape of a submarine.

You can explore the new courses on pages 30-37 (pending the opening date of the Barrow campus). Please visit our website for further updates and details.

In partnership with:

**BAE SYSTEMS**



“ THE CAMPUS AND WIDER BARROW LEARNING QUARTER WILL BE TRANSFORMATIONAL TO LEARNERS WHO WILL ACCESS HIGHER EDUCATION AND CONTRIBUTE TO THE AREA'S FUTURE PROSPERITY AND GROWTH. ”

University of Cumbria Vice Chancellor, Professor Julie Mennell

FUTURE DEVELOPMENTS

FUTURE DEVELOPMENTS

# STUDENT SUPPORT

Welcome to the Student Services team here at Cumbria!

Coming to university is such an exciting time, but we know it's also a big leap and that you may need some support with academic skills, managing money, health and well-being, and more. We are here to provide you with a wide range of high-quality support services, a friendly ear if you need help, and information, advice and guidance to maximise your potential for success whilst you are studying with us.

We are made up of several different teams, to ensure every student is covered in any way they may need. Through our ethos of "Live Well Learn Well", we recognise that to thrive and progress academically, students need to be well supported across both their academic and non-academic needs.

Visit [cumbria.ac.uk/student-support](https://cumbria.ac.uk/student-support) to find out more.

## Academic Skills Support

University-level study can seem daunting, but we understand these challenges and are here to help you navigate them. Our support offer begins before you even arrive on campus - our "Head Start" academic skills courses will develop your confidence and ease you into your studies.

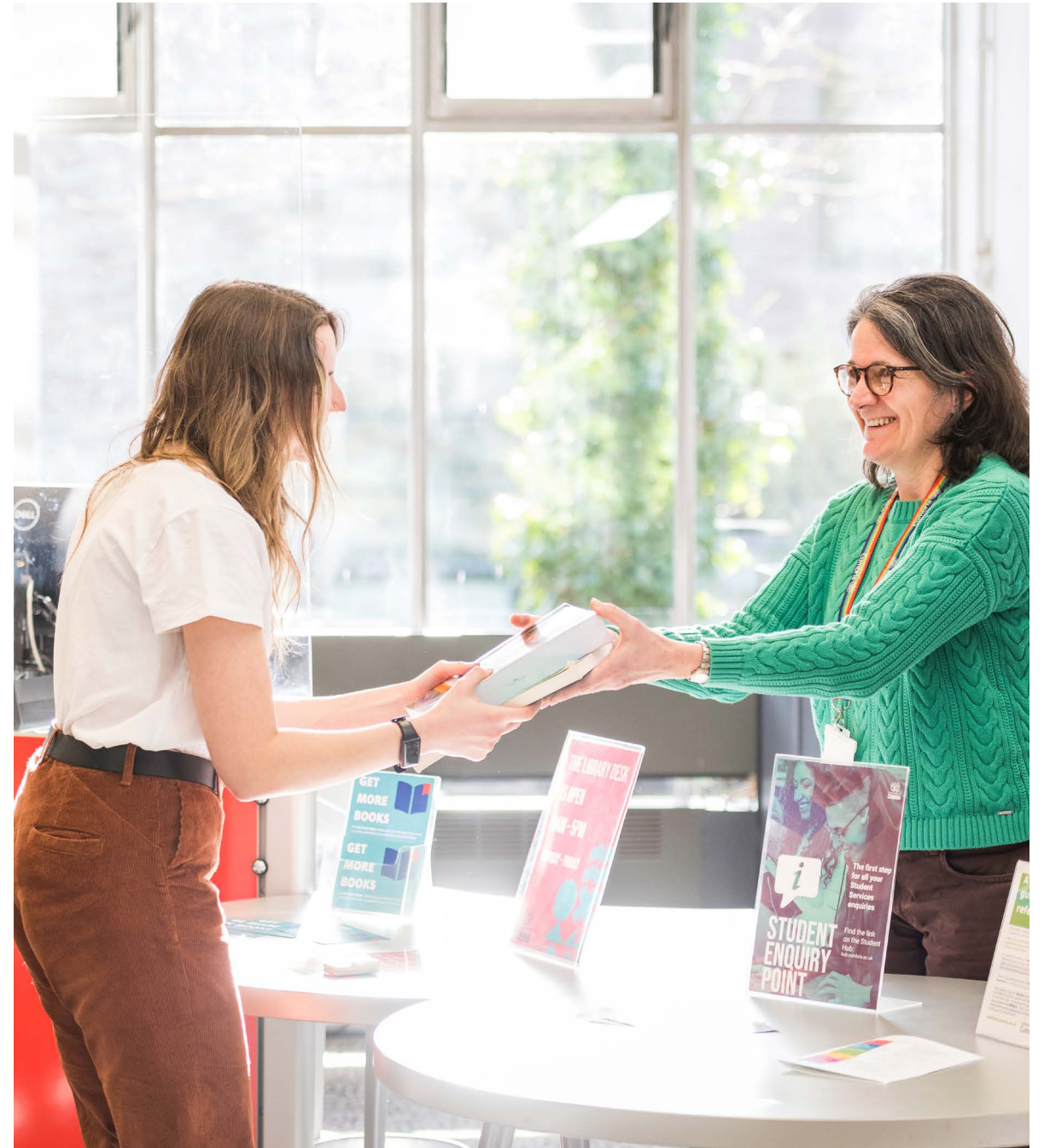
Our skills@cumbria team works with your tutors to make sure you've got the reading lists and resources needed for your course. Our wide range of online resources is supplemented by timetabled workshops, webinars, and group or

1-to-1 support sessions that cover literature searches, referencing and academic writing.

Throughout the year, the skills@cumbria and Mental Health teams jointly run workshops on subjects ranging from managing your workload to dealing with academic stress and anxiety.

## Health & Wellbeing

Your wellbeing is our top priority, which is why we provide a comprehensive range of services to ensure you feel supported during your transition to university life, and throughout your time at Cumbria.



Our Mental Health Case Workers offer one-to-one advisory support, compassion-focused therapy groups, and signposting to external support services. Whatever your concern, we want to help, so don't hesitate to reach out.

### Inclusion and Disability Support

The University is committed to supporting disabled students so they can participate in their programmes of study. To help us do this, we would encourage you to declare your disability or Specific Learning Difference as early as possible; for example, during the admission process.

Our specialist Disability Support teams can work with you to establish your reasonable adjustment support needs, discuss any additional funding you may be eligible for, such as the Disabled Students Allowance, and develop your Learning Support Plan.

### Making Friends

We know that socialising is key to the university experience, and to your mental health. That's why we've created our welcoming campus environments, complete with friendly student communities and inclusive societies and events. From Freshers' Week to year-round Students' Union events and society meet-ups, there are plenty of opportunities to meet like-minded people and forge lasting friendships at Cumbria.

# CAREER SUPPORT

The story of you beginning your career doesn't start after you graduate, it begins the moment you become a student at Cumbria. We equip our students so that they have the competitive edge in the job market as soon as they leave us.

According to the HESA Graduate Outcomes 2023 report, 97% of our graduates go into employment or further study within 15 months of graduating, which means you'll be joining a university that's top in the North West for graduate prospects. Your future outlook is bright beyond your studies with us.

### Enriching Your Career Skills Alongside Your Studies

In addition to the amazing placements, partnership opportunities, and accreditations that our courses offer (which you can find out about on our course pages), you'll also have access to 'My Career Enriched' for the duration of your course and beyond graduation. We can support you in:

- Searching for graduate jobs, part-time work, work experience, industry placements and paid internships.
- Providing one-to-one advice and guidance appointments and practice interviews.

- Searching for and booking onto careers fairs and employability events.
- Providing tailored feedback on your CVs, cover letters and application forms.
- Completing mini online courses to improve your employability skills.
- Undertaking career exploration on our Career Discovery Feed.
- Providing practical workshops on CVs, applications, interviews, success in your chosen sector, options with your degree, job search skills, starting your own business, becoming a freelancer and more.
- Providing information for disabled students on how to declare a disability, applying for work, communicating strengths, and requesting adjustments in the recruitment process.
- Completing our Career Ahead Award; undertake various activities to achieve Bronze, Silver and Gold awards, including completing short courses on LinkedIn Learning and uploading your CV for feedback.

### Chaplaincy

We provide a safe place, a listening ear, and opportunities to worship and celebrate your religion, whatever your beliefs are. Whether you already have a strong faith or are simply interested in thinking a bit more about life's journey or finding ways to develop your character, we're here to listen and encourage.

Each of our campuses offer quiet/prayer rooms with wash facilities and can sign-post you to local faith groups and gatherings during your time at university.

### Supporting You After You Graduate

At Cumbria, our support does not end when we hand over your graduation certificate. For three years after you graduate you'll continue to have access to all of the above services, as well as lifelong access to the Cumbria Network, our central alumni hub, giving you access to fantastic networking and mentoring opportunities.

### Financial Support

If you experience unexpected financial emergencies or financial difficulty during your course, the University of Cumbria Student Support Fund is available to help you. We can also offer small, interest-free loans to tide you over if you're struggling due to delays in receiving funding. Our Students' Union can lend a hand too, with food pantries located at each of our campus locations.

### Library Services

Supporting your learning with access to thousands of books, 390,000 e-books, 25,000 journals and electronic resource collections, our libraries provide a complete range of services and support to enhance your academic and study skills. Our campus libraries are friendly, welcoming, and safe spaces for you to use and enjoy.

We regularly increase our library resources and along with working with lecturers to provide the resources you need for your modules, we also encourage you to recommend books for the library to purchase for our collections as part of our 'Get More Books' and 'Reading for You' schemes.



# YOUR HOME AT CUMBRIA

For many students, living in halls is an integral part of the university experience. If you are moving away from home for the first time, our halls provide a safe environment for you to live, study, and socialise.

The university provides a range of campus accommodation to cater for all budgets, offering excellent value for money across a range of room type options, so we're sure you'll find your home-from-home at Cumbria.

Imagine waking up to the smell of coffee brewing and the sound of flatmates chatting. Leave the comfort of your warm, cosy bed and open your curtains to a view of one of our green campuses and historic cities, or the stunning London city skyline, or maybe the rolling Lake District hills. Our accommodation is where lifelong friendships are made, culinary inventions are shaped, and memories of celebrations are created. Whichever location you choose, this is your home and your story.

YOUR HOME AT CUMBRIA

 **AFFORDABLE LIVING**

 **EN-SUITE AND SHARED FACILITIES**



**GREAT LOCATIONS CLOSE TO CAMPUS**

**YOUR RIGHT TO A QUALITY HOME**

**THE STUDENT ACCOMMODATION CODE**

**SAFE AND GOOD QUALITY ACCOMMODATION**



## BRAMPTON ROAD HALLS

**LOCATION:** Brampton Road, Carlisle

**AVAILABILITY:** 113 bedrooms

**ROOM TYPE:** 37 en-suite bedrooms and 76 standard single bedrooms

**STUDENTS PER FLAT:** 5-7 students

**PRICE:** £82.00 PW standard single, £116.00 PW en-suite.



[cumbria.ac.uk/accommodation](http://cumbria.ac.uk/accommodation)

YOUR HOME AT CUMBRIA



## CARROCK HALL

**LOCATION:** Fusehill Street, Carlisle

**AVAILABILITY:** 85 bedrooms

**ROOM TYPE:** En-suite

**STUDENTS PER FLAT:** 5-7 students

**PRICE:** £125.00 PW



[cumbria.ac.uk/accommodation](http://cumbria.ac.uk/accommodation)



## DENTON HOLME

**LOCATION:** Norfolk Street, Carlisle

**AVAILABILITY:** 249 rooms within 25 townhouses

**ROOM TYPE:** Fully furnished en-suite and standard rooms with 3/4 beds

**PRICE:** £125.00 PW

\*Denton Holme is a nominated partner of the University of Cumbria.



[cumbria.ac.uk/accommodation](http://cumbria.ac.uk/accommodation)



## FELL COURT

**LOCATION:** Rydal Road, Ambleside

**AVAILABILITY:** 71 bedrooms, split in 7 townhouses

**ROOM TYPE:** En-suite, open plan kitchen dining and lounge

**STUDENTS PER FLAT:** 8–11 students

**PRICE:** £131.00 PW



[cumbria.ac.uk/accommodation](http://cumbria.ac.uk/accommodation)



## WADDELL HALL

**LOCATION:** Lancaster

**AVAILABILITY:** 241 rooms

**ROOM TYPE:** Mix of en-suite and standard single, with communal kitchen lounges.

**STUDENTS PER FLAT:** Between 6–7 students, in blocks of 6.

**PRICE:** Waddell North standard single £96.00 PW, en-suite £125.00 PW.  
Waddell South standard single, £82.00 PW.



[cumbria.ac.uk/accommodation](http://cumbria.ac.uk/accommodation)



## FAIRFIELD HALLS

**LOCATION:** Rydal Road, Ambleside

**AVAILABILITY:** 40 bedrooms

**ROOM TYPE:** En-suite, communal kitchen spaces per floor, with social lounge/common room on the ground floor.

**STUDENTS PER FLAT:** 10 students

**PRICE:** £116.00 PW



[cumbria.ac.uk/accommodation](http://cumbria.ac.uk/accommodation)



## HELVELLYN HALLS

**LOCATION:** Rydal Road, Ambleside

**AVAILABILITY:** 20 bedrooms

**ROOM TYPE:** Mix of standard and large single, spread across 3 floors

**PRICE:** £96.00 PW standard single, £104.00 PW large single.



[cumbria.ac.uk/accommodation](http://cumbria.ac.uk/accommodation)



## WANSFELL HALL

**LOCATION:** Rydal Road, Ambleside

**AVAILABILITY:** 11 bedrooms

**ROOM TYPE:** Mix of standard and large single, communal kitchens and dining areas, also with access to the social lounge based in Fairfield Hall.

**PRICE:** £96.00 PW standard single, £104.00 PW large single.



[cumbria.ac.uk/accommodation](http://cumbria.ac.uk/accommodation)



## THE COTTAGES

**LOCATION:** Nook Lane, Ambleside

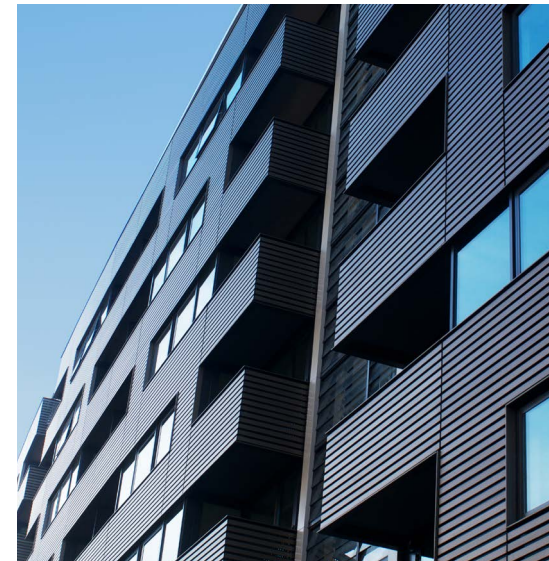
**AVAILABILITY:** 4–5 bedrooms

**ROOM TYPE:** Self-catered standard and large single rooms, with both a front garden and a rear yard.

**PRICE:** £96.00 PW standard single, £104.00 PW large single.



[cumbria.ac.uk/accommodation](http://cumbria.ac.uk/accommodation)



## LONDON STUDENTPAD

We advertise local accommodation through London Studentpad, the student accommodation search engine. Studentpad lets you search for student houses, flats and lodgings in London and the UK.

# A DAY IN THE LIFE...



## LET'S GO ON A BIKE RIDE

Maybe it's through the busy streets of London, or cobbled paths of Lancaster, or maybe you're on a mountain bike, speeding down a hillside in Ambleside.



## LET'S GO TO AN ART GALLERY



## LET'S GO OUT FOR DRINKS



## LET'S GO TO A CAFÉ

Maybe you've walked to Tullie House in the bustling centre of Carlisle, or perhaps you've jumped on a bus to see the latest exhibit at the Tate Modern in London. Maybe you've made your own piece of art and are off to see it on display at the Vallum Gallery on our Brampton Road campus. Perhaps you've walked into Lancaster city centre, with music, crowds and cocktails on 2-for-1.

Maybe you've wandered into a cosy Lake District pub, enjoying a local brewery beer and a bowl of chips by the fire. Perhaps you've gone on a pub crawl around all the different pockets of London, dancing for hours in some new secret club.

There's so much to see and do around our campuses... days spent rock climbing, walking, hiking, caving or canoeing; trips to food markets, parks, shopping centres, restaurants and the cinema; weekends spent camping, attending local festivals or even volunteering.

Whatever your interests, hobbies, or ideas of adventure, one thing is for certain: **life is full of excitement at Cumbria.**



A DAY IN THE LIFE

A DAY IN THE LIFE



# LOVE YOUR STUDENT UNION

# UCSU

**Hello!** We are the University of Cumbria Students' Union (UCSU). It's our mission to represent and support you in any way that we can. We'll help you to develop and achieve your dreams, and give you the best possible student experience during your time at Cumbria.

We are headed up by an executive team, who are elected by you each year. Led by the three full-time elected Officers and the elected Campus Reps, it is the job of the Officer team to be your voice in the highest levels of the university and help to bring any changes that you want to see, to make your university experience the best it can be.

## Societies & Groups

We have a wide range of societies that cover everything from midwifery to paddle boarding, criminology to mountain climbing. Such student-led groups are here to help you continue something you already love, discover a new favourite, or just meet new people. But if something doesn't already exist, we will help you set it up. Search our societies.



[ucsu.me/groups](https://ucsu.me/groups)

FIND OUT MORE

## Events

Events are offered both through UCSU and our Student Groups and include club nights, festivals, city events, volunteering fairs, workshops, training courses and more. We aim to provide events and opportunities that everyone at the university will enjoy. Scan the QR code below to view our upcoming events.

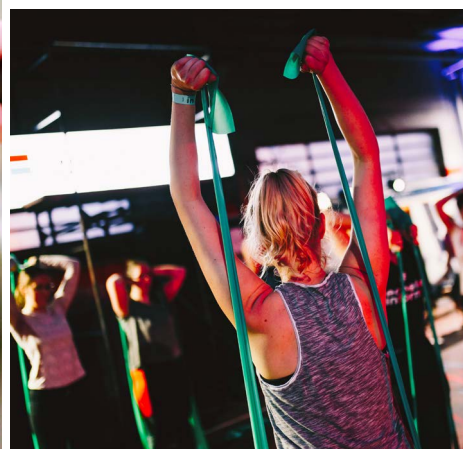


[ucsu.me/events](https://ucsu.me/events)

FIND OUT MORE

STUDENTS UNION

STUDENTS UNION



# SPORTS, FITNESS & ACTIVITIES

## SPORT AND ACTIVITIES

Ensuring your well-being and mental health is cared for, we encourage all our students to have a healthy balance of work and play. Physical activity can help boost self-esteem, mood, sleep quality and energy, so let's take a look at what you can do to keep fit and active during your time at university.

UoC Active offers a great range of facilities and services at our Ambleside, Carlisle and Lancaster campus locations. Our sport and fitness facilities cater for a wide range of sports activities through UoC Active Play. Our facilities also have air-conditioned fitness suites, with year-round class timetables offering pilates, bootcamps, yoga, strength and cardio sessions. Our Lancaster campus also has grass and floodlit artificial turf pitches.

As well as affordable campus memberships, we offer great deals on premium membership packages, which include access to our partner facilities at Better Leisure and Salt Ayre Leisure Centre. UoC Active is also part of the BUCS UNiversal Scheme, which allows access to fitness facilities at universities all around the country.

## CLUBS

Through our Students' Union, we have a range of clubs available to our students, including badminton, equestrian and football. At each of our campus locations, we can also help you find clubs which are available to the wider community outside of the university. SU teams also have the opportunity to take part in BUCS competitions.

## GREAT OUTDOORS

If you are interested in outdoor pursuits, you are spoilt for choice by the huge range of opportunities available on your doorstep, including fell running, mountain biking and sailing. Our Ambleside campus is set in the heart of the Lake District, a UNESCO World Heritage site, meaning students have easy access to the best adventure playground.

# OUR COURSES

## WHERE WILL YOUR STORY TAKE YOU?

Will your story be one of changing the world or striving for the dream job you're passionate about? With over 107 undergraduate courses to choose from, at the University of Cumbria, we'll enable you to get into your chosen career.

Our undergraduate courses are usually three years of full-time study, however, we do offer top-up degrees for those who have a HND or Foundation Degree. We also offer an alternative pathway into studying a degree via our Integrated Foundation Year courses, which typically involve four years' full-time study to achieve an undergraduate degree.

You'll find full course information, including accreditations, modules and entry requirements, on our website: [cumbria.ac.uk/courses](https://cumbria.ac.uk/courses). If you require any advice or guidance with your university and course search, we are here to help. Please contact our Course Enquiries Team on **01228 588588** or email [enquirycentre@cumbria.ac.uk](mailto:enquirycentre@cumbria.ac.uk).

## UCAS DEADLINES FOR APPLICATIONS

**2 May 2023** - UCAS search tool displays 2024 courses.

**9 May 2023** - Adviser portal opens for 2024 entry.

**16 May 2023** - Undergraduate applications open for 2024 entry.

**5 September 2023** - Completed undergraduate applications can be submitted to UCAS.

**16 October 2023** - Applications for Oxford, Cambridge and most courses in medicine, dentistry, and veterinary medicine/science should arrive at UCAS by 18:00 (UK time).

**31 January 2024** - Applications for the majority of undergraduate courses should arrive at UCAS by 18:00 (UK time) on the equal consideration date.



# ADVANCED MANUFACTURING ENGINEERING



Do you want to be part of a fast-paced and constantly developing industry? Would you like to work for major employers with global connections? Then our Advanced Manufacturing programmes could provide the springboard you need to launch a fascinating and rewarding career.

Blending the technical focus of engineering with environmental awareness, management principles and cutting-edge IT skills, our BEng (Hons) Advanced Manufacturing course will teach you how to develop engineering solutions using new technologies.

Encouraging creativity and innovation, our Advanced Manufacturing degree programme has been designed in collaboration with BAE Systems, embedding industry touchpoints within every module. This means some course content will be delivered by industry professionals or within an industrial setting, offering the opportunity to gain certifications or badges from software providers.

We also offer an Advanced Manufacturing degree with a year in industry, which is a year-long period of paid work experience. If chosen, this is an excellent opportunity to apply your learning to the world of work, get hands-on industrial training and build connections within the sector.

Both of our Advanced Manufacturing courses will be taught at our brand-new Barrow campus, a purpose-built facility that has been designed with modern facilities and equipment (subject to opening date).

## OUR FACILITIES INCLUDE

Course delivered in a UK Manufacturing Hub in Barrow-in-Furness.

ADVANCED MANUFACTURING ENGINEERING	DURATION	LOCATION	UCAS POINTS	UCAS CODE	ADDITIONAL ENTRY REQUIREMENTS
<b>Advanced Manufacturing, BEng (Hons)</b>	3 years	Barrow	112–120	B113	32 UCAS points in A-level Maths and Physics or STEM Science; GCSE English, Maths and Science at grade 4/C or above
<b>Advanced Manufacturing, BEng (Hons) (With industry placement)</b>	4 years	Barrow	112–120	B114	32 UCAS points in A-level Maths and Physics or STEM Science; GCSE English, Maths and Science at grade 4/C or above



# BUSINESS

OUR COURSES

OUR COURSES



## LOVE JASON'S STORY

The course has been both interesting and challenging. If I had to pick out one thing that really stands out, it would be the academic staff. The lecturers are approachable, friendly and are always there to help.

**BA (Hons) Business Management with Human Resources Management**

Do you enjoy problem solving, team-building and public speaking? Is it your goal to manage your own team or company? Our Business courses will provide you with the knowledge and skills needed to lead others and remain competitive in a fast-paced environment.

The BA (Hons) Business Management programme has been designed in collaboration with industry and professional bodies and covers many of the fascinating intricacies of business, including accounting, finance and marketing. Providing global perspectives on business practices and strategies, you'll develop skills in leadership, entrepreneurship and networking, giving you the tools and confidence to become a persuasive, business-savvy graduate, ready to take on the big issues facing modern businesses today.

While you'll spend time developing theories and concepts, you won't just learn theoretically – with our innovative teaching practices, you could find yourself leading a lecture or turning the classroom into a mock boardroom. Whichever path you choose, your degree will lead to excellent career opportunities, from executive positions to managing your own brand or partnership.

### FACTS & STATS

- 90% overall student satisfaction for business management (NSS, 2022).
- Top 5 in UK for developed CEOs and MDs (Hitachi Capital, 2021).
- Within top 15% of UK universities whose graduates become small business founders (Hitachi Capital, 2021).

### OUR FACILITIES INCLUDE

- Boardroom (Lancaster)
- Quiet working and recording facilities

BUSINESS	DURATION	LOCATION	UCAS POINTS	UCAS CODE	ADDITIONAL ENTRY REQUIREMENTS
<b>Business Management, BA (Hons)</b>	3 years	Lancaster, Carlisle, Barrow	104–112	N100	
<b>Business Management, BA (Hons) (With IFY)</b>	4 years	Lancaster	48	N101	
<b>Global Business Management, BA (Hons) (Top Up)</b>	1 years	London		N321	Successful completion of a related foundation degree or HND
<b>International Business Management, BA (Hons)</b>	3 years	Lancaster	104–112	N120	
<b>International Business Management, BA (Hons) (Top Up)</b>	1 year	Lancaster		N121	Successful completion of a related foundation degree or HND
<b>Project Management, BA (Hons) (Top Up)</b>	1 year	Carlisle		N215	Successful completion of a related foundation degree or HND



# COMPUTER SCIENCE



OUR COURSES

OUR COURSES

Are you interested in developing the technology of the future? Do you want to play your part in a dynamic and rapidly growing sector? Our Computer Science programmes will give you a strong foundation in problem-solving, logical knowledge and critical thinking, helping you design software solutions that solve real-world issues.

The BSc (Hons) Computer Science degree is a new and exciting course that blends the technical focus of computer science with social and environmental awareness. You will explore computers, computer systems, software and programming, as well as selected topics in business, management and leadership.

Developed in collaboration with BAE Systems, industry touchpoints are embedded within every module, meaning some course content will be delivered by industry professionals or within an industrial setting, offering you the chance to gain certifications or badges from software providers.

We also offer a Computer Science degree with a year in industry, which is a year-long period of paid work experience. If you choose this path, you'll be able to apply your learning to the world of work, get hands-on industrial training and build connections within the sector.

Both of our Computer Science courses will be taught at our brand-new Barrow campus, a purpose-built facility that has been designed with modern equipment and facilities (subject to opening date).

## OUR FACILITIES INCLUDE

- Brand-new, purpose-built facility with emerging technology to support your learning.
- Course delivered in a UK Manufacturing Hub in Barrow-in-Furness.

COMPUTER SCIENCE	DURATION	LOCATION	UCAS POINTS	UCAS CODE	ADDITIONAL ENTRY REQUIREMENTS
Computer Science, BSc (Hons)	3 years	Barrow	112-120	B111	32 UCAS points in A-level Maths and Physics or STEM Science; GCSE English and Maths at grade 4/C or above
Computer Science, BSc (Hons) (With industry placement)	4 years	Barrow	112-120	B112	32 UCAS points in A-level Maths and Physics or STEM Science; GCSE English and Maths at grade 4/C or above

# CREATIVE & MEDIA ARTS

Accreditations & Partners:



OUR COURSES

OUR COURSES



## LOVE NATHAN'S STORY

Learning through tutorials, crits, seminars and lectures are much more focused in a place like the University of Cumbria. This kind of environment is the best place to learn. Having a sole space for artists made a great little community, encouraged socialising and sharing ideas.  
BA (Hons) Fine Art

Do you have a love for all things creative?  
 Are you keen to explore your artistic skills and develop your unique voice? Our Creative and Media Arts courses can help you pursue your passion and develop your ideas into an exciting and fulfilling career.

We offer a number of courses in the Arts, including Commercial Photography, Film & Television, Fine Art, Illustration, Wildlife Media and more. No matter which course you choose, you'll be immersed in a diverse range of projects where you will gain high-level creative and industry skills, giving you the confidence to make the leap into the professional world.

Our expert academics will encourage you to find and nurture your artistic voice, giving you extensive feedback, support and advice throughout the duration of your course. You'll also benefit from having full access to bespoke studios, workshops and industry-standard equipment, where you can hone your artistic abilities and develop your speciality.

Throughout your degree, you'll have the chance to showcase your portfolio at both virtual and public exhibitions, providing valuable opportunities to exhibit your best work and network with industry professionals.

### FACTS & STATS

- Ranked 2nd in the North West for continuation for Film Production & Photography (Guardian University Guide, 2023).
- 77.7% of students agreed that our Design Studies courses have challenged them to achieve their best work (NSS, 2022).

CREATIVE & MEDIA ARTS	DURATION	LOCATION	UCAS POINTS	UCAS CODE	ADDITIONAL ENTRY REQUIREMENTS
Animation & Visual Effects, BA (Hons)	3 years	Carlisle	104-120	W286	
Commercial Photography, BA (Hons)	3 years	Carlisle	104-120	W287	Applicants are required to produce and provide a portfolio
Commercial Photography, BA (Hons) (With IFY)	4 years	Carlisle	48	W288	Applicants are required to produce and provide a portfolio
Creative Advertising, BA (Hons)	3 years	Carlisle	104-120		
Film and Television, BA (Hons)	3 years	Carlisle	104-120	P311	

CREATIVE & MEDIA ARTS	DURATION	LOCATION	UCAS POINTS	UCAS CODE	ADDITIONAL ENTRY REQUIREMENTS
Film and Television, BA (Hons) (With IFY)	4 years	Carlisle	48	P314	
Fine Art, BA (Hons)	3 years	Carlisle	104-112	W100	Applicants are required to produce and provide a portfolio
Fine Art, BA (Hons) (With IFY)	4 years	Carlisle	48	W108	Applicants are required to produce and provide a portfolio
Games Design, BA (Hons)	3 years	Carlisle	104-112	W282	
Games Design, BA (Hons) (With IFY)	3 years	Carlisle	48	W283	
Games Development, BSc (Hons)	3 years	Carlisle	104-112	W288	
Games Development, BSc (Hons) (With IFY)	4 years	Carlisle	48	W285	
Graphic Design, BA (Hons)	3 years	Carlisle	104-112	W210	Applicants are required to produce and provide a portfolio
Graphic Design, BA (Hons) (With IFY)	4 years	Carlisle	48	W215	Applicants are required to produce and provide a portfolio
Graphic Design, BA (Hons) (With Placement)	3 years	Carlisle	104-112	W211	Applicants are required to produce and provide a portfolio
Illustration, BA (Hons)	3 years	Carlisle	104-112	W220	Applicants are required to produce and provide a portfolio
Illustration, BA (Hons) (With IFY)	4 years	Carlisle	48	W222	Applicants are required to produce and provide a portfolio
Illustration, BA (Hons) (With Placement)	3 years	Carlisle	104-112	W221	Applicants are required to produce and provide a portfolio
Photography, BA (Hons)	3 years	Carlisle	104-112	W641	Applicants are required to produce and provide a portfolio
Photography, BA (Hons) (With IFY)	4 years	Carlisle	48	W640	Applicants are required to produce and provide a portfolio
Photography with Placement, BA (Hons)	3 years	Carlisle	104-112	W642	Applicants are required to produce and provide a portfolio
User Experience and User Interface (UX/UI) Design, BA (Hons)	3 years	Carlisle	104-120		
Wildlife Media, BA (Hons)	3 years	Carlisle	104-112	CW36	Applicants are required to produce and provide a portfolio
Wildlife Media, BA (Hons) (With IFY)	4 years	Carlisle	48	CW37	Applicants are required to produce and provide a portfolio

# EDUCATION

OUR COURSES

OUR COURSES

Accreditations & Partners:



## LOVE LOIS' STORY

I landed a job back in April, before I had even finished the course, in an outstanding academy school in Blackburn. I will be teaching Reception children and I'm very excited to start my career as an ECT (Early Career Teacher). PGCE – Primary Education with QTS: General Primary (5-11) Years

Do you have a passion for shaping and changing people’s lives through education? Are you keen to play a part in empowering the next generation of learners? Our Education courses will equip you with the training needed to make a real difference as an educator, no matter the environment you wish to work in.

If you want to enrich the lives of young children, our Teacher Training programmes can help you develop the skills to become a confident and inspiring teacher. Our Initial Teacher Education courses have Qualified Teacher Status (QTS) built-in, meaning you can apply for a position as a teacher the moment you graduate. Throughout your studies, you’ll be supported by our committed and friendly academics, who can provide 1-2-1 support and guidance. You will also be able to put your knowledge and expertise into practice during school-based placements.

However, education doesn’t just happen in the classroom, so if you’re interested in a career in education but would like to keep your options open, our Education Studies programmes will allow you to explore numerous pathways. Written and designed by experienced tutors, you’ll discover the world of social justice, policy and current affairs.

Whether your dream role lies in a school, nursery, prison, government agency or museum, you have the opportunity to make a long-lasting difference.

### FACTS & STATS

- 1st in the North West for Graduate Prospects – Outcomes (Complete University Guide, 2023).
- 3rd in the North West (out of 8) for Firsts/2.1s (%) (The Times, 2023).
- OFSTED 'Good' provider of Initial Teacher Education (ITE) for both Primary and Secondary phases.

### OUR ACCREDITATIONS

The University of Warwick provides accreditation for the QTS element of this University of Cumbria programme.

EDUCATION	DURATION	LOCATION	UCAS POINTS	UCAS CODE	ADDITIONAL ENTRY REQUIREMENTS
Education Studies, BA (Hons)	3 years	London	96–112	X301	GCSE English at grade 4/C or above
Education Studies, DipHE	2 years	London	72–88	X302	DBS and medical checks required; GCSE English at grade 4/C or above
Education Studies, BA (Hons) (Top Up)	1 year	London		X305	Foundation Degree or HND in relevant subject (24 credits); GCSE English at grade 4/C or above
Education Studies, BA (Hons) (Top Up) (Distance Learning)	1 year	Online		X307	Foundation Degree or HND in relevant subject (24 credits); GCSE English at grade 4/C or above
Education Studies, BA (Hons) (With Placement)	2 years	Lancaster	96–112	X306	DBS and medical checks required; GCSE English at grade 4/C or above
Primary and Early Years Education (3–11) with QTS, BA (Hons)	3 years	Carlisle, Lancaster and London	112-128	X124	DBS and medical checks required; GCSE English, Maths and Science at grade 4/C or above
Primary Education (5–11): Inclusion with SEND with QTS, BA (Hons)	4 years	Lancaster	104–128	X360	DBS and medical checks required; GCSE English, Maths and Science at grade 4/C or above



OUR COURSES

OUR COURSES

# HEALTHCARE PROFESSIONS

Accreditations & Partners:



OUR COURSES

OUR COURSES



## LOVE ALIYAH'S STORY

The university combined our classes with gaining hands-on experiences in the simulation labs. If it wasn't for the simulation suite, I would have really struggled to start working on a real-life ward. But the university really prepared me practically and through theory.  
**BSc (Hons) Children's Nursing**



Do you want to make a positive impact on people's lives? Are you passionate about supporting individuals, families and the communities in which they live? Our Healthcare Professions courses open doors to exciting opportunities, allowing you to play an essential role in the health and well-being of a wide range of patients.

There are many kinds of healthcare professional roles, but they all share a common goal: to help those in need. Our degree programmes in Occupational Therapy, Physiotherapy, Midwifery, Paramedic Science, Diagnostic Radiography, Adult Nursing, Children's Nursing, Learning Disabilities Nursing and Mental Health Nursing provide you with the necessary skills to embark on a rewarding and fulfilling career.

Whether you want to care for mothers and babies, children, adults or people with disabilities, our accredited and validated courses will equip you with the tools, knowledge and confidence to take the next step towards becoming a healthcare professional.

All our courses are taught by passionate and experienced tutors in friendly, co-operative and encouraging environments, ensuring you have access to outstanding support services throughout your studies.

We also work closely with local NHS Trusts and Partnerships to offer quality work placements, ensuring all students benefit from hands-on experience and excellent employability rates after graduation. Are you ready to make a difference and discover everything you're capable of?

### FACTS & STATS

- Our Healthcare Professions courses are ranked 1st in the North West and 10th in the UK (Guardian University Guide, 2023).
- 100% Graduate Prospects for BSc (Hons) Physiotherapy (Complete University Guide, 2023).
- 97% of our nursing students are in a graduate job or further study 15 months after graduation (Guardian University Guide, 2023).

### OUR FACILITIES INCLUDE

- Simulated learning suites
- Clinical laboratories
- Mock hospital wards
- Midwifery birthing suite
- Immersive suite

HEALTH PROFESSIONS	DURATION	LOCATION	UCAS POINTS	UCAS CODE	ADDITIONAL ENTRY REQUIREMENTS
<b>Diagnostic Radiography, BSc (Hons)</b>	3 years	Carlisle, Lancaster	112–120	B821	DBS and medical checks required; GCSE English, Maths and Science at grade 4/C or above
<b>Diagnostic Radiography, BSc (Hons) (Top Up)</b>	1 year	Carlisle, Lancaster		B820	GCSE English and Maths at grade 4/C or above; APs will need the relevant qualification to work as an Assistant Practitioner (normally an FdSc) and minimum 2 years' work-based experience in an imaging department; see website for more detailed entry requirements
<b>Occupational Therapy, BSc (Hons)</b>	3 years	Carlisle, Lancaster	112–120	B920	DBS and medical checks required; GCSE English at grade 4/C or above
<b>Paramedic Science, BSc (Hons)</b>	3 years	Lancaster	112–120	B780	DBS and medical checks required; A-level in Natural or Social Science; GCSE English, Maths and Science at grade 4/C or above
<b>Physiotherapy, BSc (Hons)</b>	3 years	Carlisle	120–128	B160	DBS and medical checks required; 40 UCAS points in A-level Biology or PE; GCSE English, Maths and Science at grade 4/C or above
<b>Midwifery, BSc (Hons)</b>	3 years	Carlisle, Lancaster	120–128	B720	DBS and medical checks required; 40 UCAS points in A-level Biology or PE; GCSE English, Maths and Science at grade 4/C or above
<b>Nursing Associate, FdSc</b>	2 years	Carlisle, Lancaster		N215	GCSE English and Maths at grade 4/C or above; NVQ Level 3 or equivalent portfolio of evidence; for APL, please refer to the university website; see website for more detailed entry requirements
<b>Nursing/Registered Nurse: Adult Nursing, BSc (Hons)</b>	3 years	Carlisle, Lancaster, Barrow	104–112	B700	DBS and medical checks required; GCSE English and Maths at grade 4/C or above
<b>Nursing/Registered Nurse: Children's Nursing, BSc (Hons)</b>	3 years	Carlisle, Lancaster	104–112	B730	DBS and medical checks required; GCSE English and Maths at grade 4/C or above
<b>Nursing/Registered Nurse: Mental Health Nursing, BSc (Hons)</b>	3 years	Carlisle, Lancaster	104–112	B760	DBS and medical checks required; GCSE English and Maths at grade 4/C or above
<b>Nursing/Registered Nurse: Learning Disabilities Nursing, BSc (Hons)</b>	3 years	Carlisle, Lancaster	104–112	B763	DBS and medical checks required; GCSE English and Maths at grade 4/C or above

# LAW & CRIMINOLOGY

Accreditations & Partners:



OUR COURSES

OUR COURSES



## LOVE DAN'S STORY

My Law degree helped me to realise my passion for social law/justice. I went straight into employment as a money advice caseworker/general advice worker at Citizens Advice Carlisle and Eden but will be looking to do a masters LLM or LPC soon. LLB (Hons) Law

Are you fascinated by the intricacies of criminal behaviour and want to understand why individuals commit crimes? Are you keen to discover the inner workings of the UK Justice System? Our Law and Criminology courses were made for you.

Designed to be academically rigorous and professionally relevant, our Law programmes will allow you to develop the breadth of skills required to become a solicitor or barrister. Your academic learning will be complimented by opportunities to gain on-the-job experience and develop your skillset in the workplace.

Led by industry professionals with real-world experience in criminality and victim support, our Criminology programmes will provide you with the tools to make a meaningful difference in the justice system. You will gain critical insights into generators of crime and criminal behaviour, developing core skills to help bring offenders to justice, provide support to victims and determine effective methods for mitigating future offences.

Through our contemporary approach to learning, which recognises the influence of digital evolutions, you will use your evolving research skills to gather and analyse information that will support current theory and help predict future challenges and solutions.

Are you ready to make a tangible impact on the world and its citizens? Unlock your potential with one of our Law and Criminology degrees.

### FACTS & STATS

- No.1 Law School in the North West (Guardian League Tables, 2023).
- 1st in the North West for Teaching Quality and Student Experience (Law) (The Times, 2023).
- 1st in the North West for Criminology (Guardian League Tables, 2023). 4th overall for Student Satisfaction, 1st in the North West (Complete University Guide, 2023).

### OUR FACILITIES INCLUDE

- Crime scene flat
- Laboratories
- Forensic labs
- Opportunity to participate in mock major incident exercise

LAW & CRIMINOLOGY	DURATION	LOCATION	UCAS POINTS	UCAS CODE	ADDITIONAL ENTRY REQUIREMENTS
Criminology, BSc (Hons)	3 years	Carlisle	104-112	L612	
Criminology, BSc (Hons) (With IFY)	4 years	Carlisle	48	L613	
Criminology with Applied Psychology, BSc (Hons)	3 years	Carlisle	104-112	C812	
Criminology with Applied Psychology, BSc (Hons) (With IFY)	4 years	Carlisle	48	C813	
Criminology with Forensic Investigation, BSc (Hons)	3 years	Carlisle	104-112	L615	
Criminology with Forensic Investigation, BSc (Hons) (With IFY)	4 years	Carlisle	48	L616	
Law, LLB (Hons)	3 years	Carlisle, Lancaster	112-128	M100	
Law, LLB (Hons) (With IFY)	4 years	Carlisle	48	M101	



# OUTDOORS & FORESTRY



OUR COURSES

OUR COURSES



## LOVE ANDY'S STORY

After leaving the Army, I knew I had to make plans in order to get on with a career and I very much saw getting a degree as a way to initiate that. Since graduating, I have worked with children in crisis care settings, using outdoor experiences to meet the needs of their care plans and to understand the opportunities they have to improve their own situation. BA (Hons) Outdoor Leadership

Do you thrive on adventure and exploration?  
 Are you keen to do your part for the planet by teaching others how to experience and enjoy it safely?  
 If you're passionate about the environment and the great outdoors, then our Outdoor and Forestry courses are for you.

With our Ambleside campus as your base, the Lake District (and its mountains, rivers, fells and lakes) will become your classroom. Your course theory will be backed up by practice, whether that's deepening your understanding and knowledge of forestry on field trips to the Highlands of Scotland or getting out of the classroom and developing your mountaineering, climbing, sailing and caving skills so you can confidently coach others.

With our excellent facilities, unique learning environment and unrivalled academic experience, you'll develop the knowledge and practical skills for a successful career, whether that's in outdoor education, tourism or conservation.

### FACTS & STATS

- 1st in the North West for Teaching Quality and Student Experience (The Times, 2023).
- 4th overall for Graduate Prospects (Complete University Guide, 2023).
- 8th Overall (out of 31) for Teaching Quality (The Times, 2023).

### OUR FACILITIES INCLUDE

- Climbing wall
- Borrowdale Stores – can borrow kayaks, SUPs, wetsuits, helmets & climbing equipment.

OUTDOORS & FORESTRY	DURATION	LOCATION	UCAS POINTS	UCAS CODE	ADDITIONAL ENTRY REQUIREMENTS
Forest Management, BSc (Hons)	3 years	Ambleside	104–120	D500	GCSE Maths at grade 4/C or above
Forest Management, BSc (Hons) (With Sandwich Placement)	4 years	Ambleside	104–120	D504	GCSE Maths at grade 4/C or above
Forestry, BSc (Hons) (Top Up)	1 year	Ambleside		D501	Successful completion of a related foundation degree or HND
Forestry, FdSc	3 years	Ambleside	48–64	D503	GCSE Maths at grade 4/C or above
Outdoor Adventure and Environmental Studies, BSc (Hons)	3 years	Ambleside	104–120	X300	
Outdoor Adventure and Environmental Studies, BSc (Hons) (with IFY)	4 years	Ambleside	48	X400	
Outdoor Education and Experiential Learning, BA (Hons) (Top Up)	1 year	Ambleside		X391	Successful completion of a related foundation degree or HND
Outdoor Education, BA (Hons) (Accelerated Degree)	3 years	Ambleside	120	NX25	
Outdoor Leadership, BA (Hons)	3 years	Ambleside	104–120	NX23	
Outdoor Leadership, BA (Hons) (With IFY)	4 years	Carlisle, Ambleside	48	NX33	



# POLICING & SECURITY INTELLIGENCE

Accreditations & Partners:



## LOVE ANNA'S STORY

My degree has supported me in my role as a special constable as I have developed existing skills such as communication and research and expanded my knowledge in legislation, all of which can be transferred into an operational policing environment.

**BSc (Hons) Professional Policing**



Do you have a passion for unravelling the intricacies of criminal offending? Would you like to contribute to the intelligence picture that helps protect national security? Our Policing, Security and Intelligence programs will provide you with the tools needed to make a real difference.

Our Security, Intelligence and Investigative Practice programme is contemporary in its approach, with specialist industry involvement influencing the design and delivery of the course. Taught by industry veterans, you will develop the skills required to analyse threats and then design solutions to minimise them. From local environments to international borders, you'll learn how to utilise your research to support your intelligence-led security predictions.

Recognised by the College of Policing, our Professional Policing course is geared towards helping you develop the tools to bring criminals to justice and make communities safer. You will delve into the theory and practice of policing before applying your evolving skillset during an immersive major incident exercise, which will give you a real taste of crime fighting as a special constable.

Being part of the Policing, Security and Intelligence programmes at Cumbria will equip you to handle extraordinary situations and give you a competitive edge as you embark on your career. If you're thinking of joining us, prepare yourself for an exciting and fulfilling journey towards making a positive difference.

### FACTS & STATS

- 81.8% Overall Student Satisfaction (NSS, 2022).
- 1st in the North West for Policing and Security (Guardian League Tables, 2023).

### OUR FACILITIES INCLUDE

- Crime scene flat
- Opportunity to participate in mock major incident exercise

POLICING & SECURITY INTELLIGENCE	DURATION	LOCATION	UCAS POINTS	UCAS CODE	ADDITIONAL ENTRY REQUIREMENTS
Professional Policing, BSc (Hons)	3 years	Carlisle	104-112	L900	
Professional Policing, BSc (Hons) (With IFY)	4 years	Carlisle	48	L901	
Security Intelligence and Investigative Practice, BSc (Hons)	3 years	Carlisle	104-112	L437	
Security Intelligence and Investigative Practice, BSc (Hons) (With IFY)	4 years	Carlisle	48	L438	

# PSYCHOLOGY

Accreditations & Partners:



## LOVE FELICITY'S STORY

I have built strong relationships with my peers and the lecturers. There is a strong sense of mutual respect between students and lecturers, and it is not uncommon for students and lecturers to collaborate together on a piece of research. I feel I'm encouraged to be me, to share my thoughts and I feel I am really thriving in this environment. BSc (Hons) Psychology

Do you enjoy investigating and debating ideas? Are you interested in broadening your understanding of human behaviour? Learn how to make a difference in the lives of others with our Psychology programmes.

Our Psychology degrees offer the perfect combination of practical and academic learning. Lectures and seminars are taught by passionate academics, all of whom are researchers and practitioners, which allows you to benefit from their expertise, insight and cutting-edge research.

During your studies, you'll also gain skills in research techniques, data handling and analysis, and communication, which are all highly valued by employers. You will be encouraged to engage in career-enhancing voluntary work, giving you hands-on experience as well as the opportunity to put your knowledge into practice.

All of our courses are accredited by the British Psychological Society, the body recognised by major employers and the gateway to rewarding careers in areas like clinical, forensic and educational psychology, social work, teaching and more. Graduates of our Psychology with Counselling and Psychotherapy Course will also be eligible to apply for membership of BACP (British Association for Counselling and Psychotherapy).

PSYCHOLOGY	DURATION	LOCATION	UCAS POINTS	UCAS CODE	ADDITIONAL ENTRY REQUIREMENTS
Psychology, BSc (Hons)	3 years	Carlisle	104-128	C800	
Psychology, BSc (Hons) (With IFY)	4 years	Carlisle	48	CC80	
Psychology with Counselling and Psychotherapy, BSc (Hons)	3 years	Carlisle	96-112	C802	DBS check required
Psychology with Counselling and Psychotherapy, BSc (Hons) (With IFY)	4 years	Carlisle	48	C803	DBS check required

### FACTS & STATS

- 1st in the North West and 11th in the UK for Psychology (Guardian University Guide, 2023).
- 1st in the UK for students satisfied with the course, teaching and feedback for Psychology (Guardian University Guide, 2023).

### OUR FACILITIES INCLUDE

- A range of equipment and software for collecting experimental data
- Dedicated study space specifically for our psychology students

# SCIENCE & CONSERVATION

OUR COURSES

OUR COURSES



## LOVE SAM'S STORY

It has focused and refined my career path, confirming my direction towards a freshwater-based research job or a conservation practitioner. You feel part of a research team rather than a student.

BSc (Hons) Marine and Freshwater Conservation



Would you like to make a living out of your love of science, animals or the environment? From Applied Chemistry to Woodland Ecology and Conservation, our courses will help you gain valuable practical experience and complex theoretical understanding so you can protect our unique habitats, wildlife and flora.

If you're passionate about exploring and protecting the natural world, our Science and Conservation courses are for you. Climate change and biodiversity loss are the twin challenges of our time, and our world relies on people like you turning your passion into a career that can have a hugely positive impact. We are here to support and guide you, with courses designed by researchers renowned for their expertise in science, conservation and zoology. Taught by world-leading academics, you'll discover how to use high-tech equipment to build on your existing skills. With field and laboratory work embedded throughout many of our Science and Conservation courses, you'll blend theory with practice to develop the applied knowledge and understanding needed in your future career. The abundance of Cumbrian rivers, lakes, coastline, forestry and wildlife on your doorstep will inspire your studies and prepare you to make a difference to the conservation of our planet.

**FACTS & STATS**

- 1st in the North West (out of 5) for Teaching Quality (79.8%) and Student Experience (74.9%) (Guardian University Guide, 2023).
- 2nd overall and 1st in the North West (out of 5 providers) for % Satisfied with Assessment (Guardian University Guide, 2023).
- 8th Overall (out of 31) for Teaching Quality (Guardian University Guide, 2023).

SCIENCE & CONSERVATION	DURATION	LOCATION	UCAS POINTS	UCAS CODE	ADDITIONAL ENTRY REQUIREMENTS
<b>Animal Conservation Science, BSc (Hons)</b>	3 years	Ambleside	104–120	D327	32 UCAS points in A-level Biology; GCSE English, Maths and Science at grade 4/C or above
<b>Animal Conservation Science, BSc (Hons) (With IFY)</b>	4 years	Carlisle/ Ambleside	48	D328	Studied A-level Biology or Applied Science; GCSE English, Maths and Science at grade 4/C or above
<b>Animal Conservation Science, BSc (Hons) (With Sandwich Placement)</b>	4 years	Ambleside	104–120	D390	32 UCAS points in A-level Biology; GCSE English, Maths and Science at grade 4/C or above

SCIENCE & CONSERVATION	DURATION	LOCATION	UCAS POINTS	UCAS CODE	ADDITIONAL ENTRY REQUIREMENTS
<b>Applied Chemistry, BSc (Hons) (Top Up)</b>	2 years	Carlisle			Successful completion of a related foundation degree or HND
<b>Biomedical Sciences, BSc (Hons)</b>	3 years	Carlisle	104–120	C910	32 UCAS points in A-level Biology; GCSE English, Maths and Science at grade 4/C or above
<b>Biomedical Sciences, BSc (Hons) (With IFY)</b>	3 years	Carlisle	48	C911	Studied A-level Biology or Applied Science; GCSE English, Maths and Science at grade 4/C or above
<b>Environmental Science, BSc (Hons)</b>	3 years	Carlisle	104–120	D401	32 UCAS points in A-level Biology or Applied Science; GCSE English, Maths and Science at grade 4/C or above
<b>Environmental Science, BSc (Hons) (With IFY)</b>	4 years	Carlisle	48	D400	
<b>Geography, BSc (Hons)</b>	3 years	Ambleside	104–120	F810	32 UCAS points in A-level Geography or Environmental Science; GCSE English, Maths and Science at grade 4/C or above
<b>Geography, BSc (Hons) (With IFY)</b>	4 years	Carlisle/ Ambleside	48	F811	Studied A-level Geography or Environmental Science; GCSE English, Maths and Science at grade 4/C or above
<b>Marine and Freshwater Conservation, BSc (Hons)</b>	3 years	Ambleside	104–120	D447	32 UCAS points in A-Level Biology or Applied Science; GCSE English, Maths, Science at grade 4/C or above
<b>Marine and Freshwater Conservation, BSc (Hons) (With IFY)</b>	4 years	Carlisle/ Ambleside	48	D458	Studied A-level Biology or Applied Science; GCSE English, Maths and Science at grade 4/C or above
<b>Marine and Freshwater Conservation, BSc (Hons) (With Sandwich Placement)</b>	4 years	Ambleside	104–120	D457	32 UCAS points in A-level Biology or Applied Science; GCSE English, Maths and Science at grade 4/C or above
<b>Woodland Ecology and Conservation, BSc (Hons)</b>	3 years	Ambleside	104–120	D440	GCSE Maths at grade 4/C or above
<b>Woodland Ecology and Conservation, BSc (Hons) (With IFY)</b>	4 years	Carlisle/ Ambleside	48	D505	GCSE Maths at grade 4/C or above
<b>Woodland Ecology and Conservation, BSc (Hons) (with Sandwich Placement)</b>	4 years	Ambleside	104–120	D502	GCSE Maths at grade 4/C or above
<b>Zoology, BSc (Hons)</b>	3 years	Carlisle	104–120	4T67	32 UCAS points in A-Level Biology; GCSE English, Maths and Science at grade 4/c or above
<b>Zoology, BSc (Hons) (With IFY)</b>	4 years	Carlisle	48	C300	Studied A-level Biology or Applied Science; GCSE English, Maths and Science at grade 4/C or above
<b>Zoology, BSc (Hons) (with Sandwich Placement)</b>	4 years	Carlisle	104–120	C301	32 UCAS points in A-level Biology; GCSE English, Maths and Science at grade 4/C or above

# SOCIAL WORK, HEALTH & WELLBEING

Accreditations  
& Partners:



OUR COURSES

OUR COURSES



## LOVE ELEANOR'S STORY

My practice educator has been invaluable and has really supported me through the harder times on placement. They have also offered extensions and the tutors have done their best to ensure we are supported.

BA (Hons) Social Work



Are you passionate about making a difference in the lives of others? Do you possess a deep empathy for those facing health and social challenges? Create positive change and improve the well-being of individuals and communities with one of our Social Work, Health, and Wellbeing courses.

Our degree programmes in Health and Social Care, Social Work, and Children and Young People's Health and Wellbeing will provide you with the necessary tools to embark on an impactful career in healthcare, social services, policy making, or the community and voluntary sector. The BA Social Work qualifies you to work across all social work settings, including adult and children's services, meaning you can apply to register as a Social Worker with Social Work England or equivalent social work regulators.

Our academics believe in the power of personalised education, recognising your unique abilities and ensuring that you receive tailored guidance to unlock your full potential. Through cutting-edge simulation exercises, including the use of virtual reality and role play, you will gain hands-on experience in a safe and controlled environment, preparing you for the complexities of your future work life.

Our curriculum is carefully designed to cultivate the critical thinking and decision-making abilities that are crucial when working directly with people. By studying real-life case studies, you will learn to analyse complex situations, develop innovative solutions, and make well-informed decisions. It's time to embrace your passion for social action and become a catalyst for a brighter future.

### FACTS & STATS

- Our Social Work and Health and Social Care courses are ranked 2nd in the UK for students satisfied with feedback and are within the top 15 for course satisfaction (Guardian University Guide, 2023).

### OUR FACILITIES INCLUDE

- Mock hospital wards
- Simulated learning suites
- Immersive suite

SOCIAL WORK, HEALTH & SOCIAL CARE	DURATION	LOCATION	UCAS POINTS	UCAS CODE	ADDITIONAL ENTRY REQUIREMENTS
Assistant Practitioner in Health & Social Care, FdSc	2 years	Lancaster, Carlisle		B900	GCSE at grade C/4 or above in Maths and English. Functional Skills Level 2 in Numeracy and Literacy are also accepted. All applicants must be working in a health and social care setting and have the support of their employer – as evidenced by a letter of support from the employer confirming provision of appropriate supervision within the work setting
Children and Young People's Health and Wellbeing, BSc (Hons)	3 years	Carlisle	96–112	L505	DBS check required
Children and Young People's Health and Wellbeing, BSc (Hons) (with IFY)	4 years	Carlisle	48	L512	DBS check required
Health and Social Care, BSc (Hons)	3 years	Carlisle, Lancaster, London	104–112	B711	GCSE English at grade 4/C or above
Health and Social Care, BSc (Hons) (with IFY)	4 years	Carlisle, Lancaster	48	B710	GCSE English at grade 4/C or above
Health and Social Care: Practice Development, BSc (Hons) (Top Up)	1 year	London		B960	Successful completion of a related foundation degree or HND
Social Work, BA (Hons)	3 years	Carlisle	104–120	L500	DBS and medical checks required; GCSE English at grade 4/C or above
Working with Children and Families, BA (Hons) (Top Up)	1 year	Carlisle, Lancaster		L598	DBS check required; successful completion of a related foundation degree or HND; GCSE English at grade 4/C or above



# SPORT

Accreditations & Partners:



OUR COURSES

OUR COURSES



## LOVE LUKE'S STORY

I enjoyed the challenge provided but value the utmost support that was provided throughout the course. I liked that there was the opportunity to work with lecturers who are really passionate about their subject and wanted to make me passionate about their subject too.

BA (Hons) Sport, Coaching & Physical Education

Want to turn your love of sport into a valuable and worthwhile career? Our vocational sport degrees, which are designed with input from industry employers, involve an array of hands-on experiences both on campus and in community settings.

You'll develop the key employability skills and experiences you need to make a major contribution to the sport industry in the years to come, whether in community or high-performance settings. In addition, you'll get access to built-in industry awards as part of your degree.

Our courses are industry-focused, helping you build your network using our strong links with local and national organisations, including professional and amateur sports clubs, local authorities and governing bodies.

The theory you'll learn is complemented by a wide range of practical sessions and placement opportunities, so you can graduate with top-class professional experience. Our expert academics (with extensive industry experience and research publications) will guide and support you through your degree.

Our courses are endorsed by CIMSPA (Chartered Institute for the Management of Sport and Physical Activity) and our Sport Rehabilitation course is BASRAT (British Association of Sport Rehabilitators and Trainers) accredited, making you highly employable upon graduation. Get the support to confidently step into your career and make a difference.

### FACTS & STATS

- Our sport courses are ranked 1st in the North West for Continuation and 2nd in the North West for Career Prospects (Guardian University Guide, 2023).
- Opportunities to gain CIMSPA and BASRaT accreditation and Hudl certification, boosting your graduate prospects.
- Access our partner organisations in sport e.g., Morecambe FC, Golf England

### OUR FACILITIES INCLUDE

- Sports hall & performance laboratories
- On & off-site rehabilitation clinics
- Performance analysis suite
- Functional strength & conditioning suite

SPORT	DURATION	LOCATION	UCAS POINTS	UCAS CODE	ADDITIONAL ENTRY REQUIREMENTS
<b>Sport Coaching and Physical Education, BA (Hons)</b>	3 years	Lancaster	104-112	C604	DBS check required; GCSE English and Maths at grade 4/C or above
<b>Sport Coaching and Physical Education, BA (Hons) (With IFY)</b>	4 years	Lancaster	48	C605	DBS check required; GCSE English and Maths at grade 4/C or above
<b>Sport, Coaching and Physical Education, BA (Hons) (Top Up)</b>	1 year	Lancaster		C603	Successful completion of a related foundation degree or HND; GCSE English at grade 4/C or above
<b>Sport Conditioning and Performance Analysis, BSc (Hons)</b>	3 years	Lancaster	104-112	C612	DBS check required; GCSE English and Maths at grade 4/C or above
<b>Sport Conditioning and Performance Analysis, BSc (Hons) (IFY)</b>	4 years	Lancaster	48	C114	DBS check required; GCSE English and Maths at grade 4/C or above
<b>Sport Rehabilitation, BSc (Hons)</b>	3 years	Lancaster	104-112	CB69	DBS check required; GCSE English at grade 4/C or above
<b>Sport Rehabilitation BSc (Hons) (With IFY)</b>	4 years	Lancaster	48	C630	DBS check required; GCSE English at grade 4/C or above



# NEED TO KNOWS

So, you've decided that life at Cumbria could be for you, and now you want to know what else we offer.

Well, it's time to nestle in with a cuppa\* and read more about the qualifications we provide, including information on entry requirements, fees and funding, and how we deliver a truly international experience.

\*Entire packet of biscuits optional...

## FEES & FUNDING

When you study at the University of Cumbria, you are investing in your future. We work hard to ensure that your degree is worth every penny by helping you graduate from university career ready.

### Here's how it works:

- You don't have to pay tuition fees up front. You study now and pay later. This means that repayments are based on what you earn, not what you owe.
- You only start repaying once you are earning over the repayment threshold. Even then, it comes straight out of your wage automatically, so there are no messy payment arrangements to make.
- To cover your living costs - including accommodation while you study with us - you can apply for maintenance support.
- Currently, students living in England receive a maintenance (living cost) loan of up to £9,978

(the London rate is £13,022). The exact amount you receive will depend on your household income and whether you live away from home. If you're from another part of the UK, you'll be able to access similar support.

Details of funding are published by Student Finance England and the equivalent agencies in Wales, Scotland and Northern Ireland. You should check their websites for updates and apply online as soon as possible, as well as checking the University of Cumbria website nearer your start date for the latest information.

Maintenance loans are repaid in the same way as your tuition fees; the repayment terms and conditions may vary depending on the funding body.

For full information, go to: [gov.uk/student-finance](http://gov.uk/student-finance)



## BURSARIES AND SCHOLARSHIPS

At the University of Cumbria, we think it's important that everyone has the opportunity to study, regardless of their financial background. That's why we offer a range of awards and bursaries to support you. For full information on bursaries and scholarships, see [cumbria.ac.uk/bursaries](http://cumbria.ac.uk/bursaries). You can also contact us for further information at [enquirycentre@cumbria.ac.uk](mailto:enquirycentre@cumbria.ac.uk) or by calling **01228 588588**

For more information on fees and finances, visit [cumbria.ac.uk/study/student-finance/](http://cumbria.ac.uk/study/student-finance/)

# TYPES OF UNDERGRADUATE STUDY

We offer a variety of undergraduate courses to provide flexible study options and assist your journey into university.

## BACHELOR (HONOURS) DEGREE

These degrees usually take three years to complete and depending on your subject of interest, you will be awarded one of the following:

- Bachelor of Arts – BA (Hons)
- Bachelor of Engineering – BEng (Hons)
- Bachelor of Law – LLB
- Bachelor of Science – BSc (Hons)

## FOUNDATION AND TOP-UP COURSES

Our foundation degree courses (FdA or FdSc), are studied over two years on a full-time basis and are usually linked to a specific professional career. This type of course can be topped up to a full BA (Hons) or BSc (Hons) degree via a top-up course.

Our top-up courses allow you to top up your foundation qualification to a full degree by completing a further year, full-time course. These courses help students who have already completed a foundation degree, a HND or a DipHE course to gain their full Honours degree qualification.

## DEGREE APPRENTICESHIPS

A degree apprenticeship is a fantastic way of achieving a professional qualification backed by a degree at the University of Cumbria. Studying whilst you work will ensure you don't pay tuition fees and allow you to earn a salary for the duration of your training. A Level 6 degree apprenticeship (equivalent to a Bachelor Honours degree) will usually take between three and five years to complete.

# QUALIFICATION LEVELS

8	Doctorate PhD				
7	Master's Degree MA, MSc			Higher Apprenticeships	Degree Apprenticeships
6	Undergraduate Degree BA, BSc, LLB				
5		Diploma of Higher Education DipHE	Higher National Diploma HND		
4		Certificate of Higher Education Cert HE	Higher National Certificate HNC		
3	A Levels	BTEC Level 3 Nationals / T Levels	Foundation Degree FdA, FdSc	Advanced Apprenticeships	International Baccalaureate IB



# BE GLOBAL

The Cumbria experience doesn't just spread across our seven campuses; we are worldwide.

People and places matter to us, which is why we aim to provide a rich and diverse student community. At Cumbria, you'll experience different ways of thinking and new cultures, making you more globally conscious.

It's not just about being part of our inclusive community; we also offer opportunities for you to go abroad to undertake placements, fieldwork and projects. Spending time in other countries can really enhance your skills and knowledge, whilst also providing you with the opportunity to form new friends and forge global networks.

Some of the benefits you will experience include:

- Greater confidence and self-awareness
- Stronger communication and foreign language skills
- More resilience and the tools to lead others
- Transferable skills to excel in your future career prospects

Not to mention, the opportunity to capture some awesome images of the fabulous places, people and cultures you experience on your travels!



## NICOLE'S STORY

Britain has a rich, interesting history, and Cumbria is no exception. You can visit historical and cultural sites such as Hadrian's Wall, Roman forts, ancient stone circles, and countless abbeys, priories, cathedrals and castles.  
BA (Hons) Fine Art



# OUR LOCATIONS

## SEVEN CAMPUSES. ONE STORY.

Spread across two World Heritage Sites, the Lake District National Park, and London, our campuses are surrounded by natural beauty, vibrant student communities, and endless career opportunities.

**Lancaster:**

Set in beautiful parkland, our Lancaster campus offers expert facilities and a friendly atmosphere. It's only a 15-minute walk away from the city centre too.

**Ambleside:**

Based within a National Park, our Ambleside campus provides exceptional facilities and unrivalled access to the Lake District, creating a unique student experience.

**Carlisle Fusehill Street:**

Offering a welcoming environment, spaces for socialising and specialist course facilities, our Fusehill Street campus is just a 5-minute walk from the city centre.

**Carlisle Brampton Road:**

Home to our Institute of Arts, Brampton Road has a friendly atmosphere and is full of history. A creative environment, it's the perfect place for you to refine your craft.

**London:**

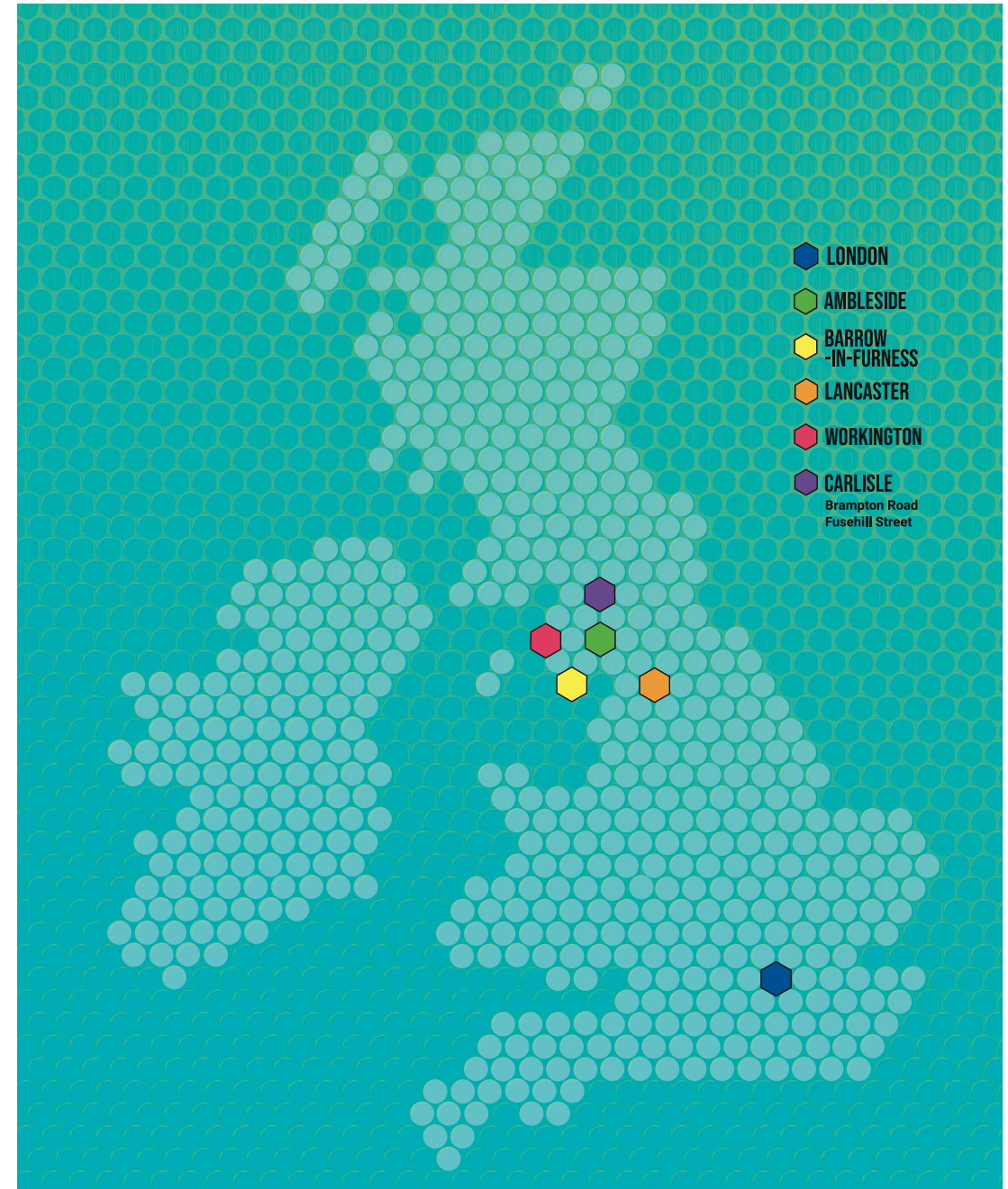
Our London campus provides the city university experience with all the perks of being on a small campus, including personalised, top-quality learning.

**Workington:**

Offering state-of-the-art facilities, the purpose-built site provides a dedicated study area and space to socialise.

**Barrow-in-Furness:**

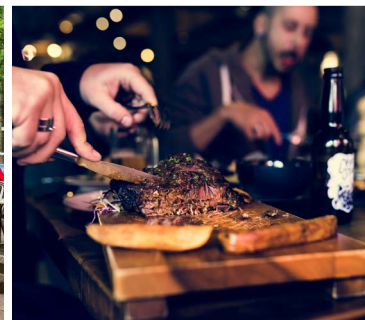
Set in the heart of Barrow-in-Furness, our Barrow campus, when open (see website for details), will offer higher education courses in a location with a strong manufacturing business focus. The new campus will provide state-of-the-art facilities and impressive employer links, offering excellent placement opportunities.



- LONDON
- AMBLESIDE
- BARROW-IN-FURNESS
- LANCASTER
- WORKINGTON
- CARLISLE  
Brampton Road  
Fusehill Street

OUR LOCATIONS

OUR LOCATIONS



# LOVE YOUR CAMPUS

# CARLISLE

Brimming with culture and a dynamic student scene, Carlisle is a vibrant Cumbrian city, with great restaurants, welcoming parks and Instagrammable hidden gems. When you're not hitting the library, discover the beautiful architecture of Carlisle Castle and Cathedral, browse the city's quirky, independent shops, or catch live music and comedy at the Sands Centre.

Carlisle's cultural calendar is studded with fun events throughout the year, too - grab your friends and sample ales and ciders at the Carlisle Beer Festival. The city's nightlife is plentiful, with everything from cocktail bars to pubs and clubs.

Our Brompton Road Campus sits right on top of Hadrian's Wall and is surrounded by beautiful parkland and rolling green lawns. Our Fusehill

Street Campus has its roots set in history too. Health and Science have been practised and studied here since World War I, when our campus was a hospital for the wounded, later becoming Carlisle's Maternity Hospital. This tradition of scientific discovery and incredible health care continues today as we train the health carers and scientists of tomorrow.



FIND OUT MORE

[cumbria.ac.uk/student-life/locations/](https://cumbria.ac.uk/student-life/locations/)



# LOVE YOUR CAMPUS

# LANCASTER

Lancaster is the ultimate university city offering the best of all worlds – vibrant city life, cultural heritage, gorgeous countryside and a short bus journey away from the coastal resort of Morecambe Bay. Just an hour from Manchester and two hours from Edinburgh. In between lectures, take in the city’s rich history at Lancaster Castle, or wander our cobbled streets, discovering quirky shops and quaint cafés at every turn. Whatever you fancy, we have affordable student eats to suit, from vegan to Vietnamese and, of course, the classic – Nando’s!

Our bustling markets bring a whole new excitement to town, with the city centre filling with delicious smells and the sizzling of pans from the street food market. Try a new cuisine at the market and head along the canal with friends for a picturesque walk. And, as the sun sets, you can join the buzzing student nightlife scene that’s made up of numerous clubs, bars and music venues.

For a break from the bustle of city life, the stunning Lake District is just a stone’s throw

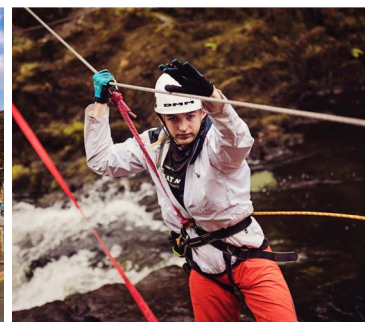
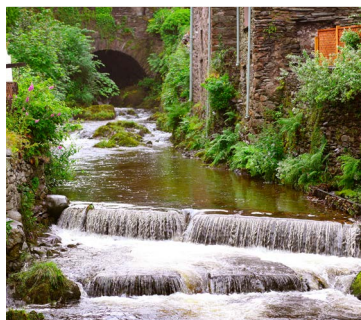
from our Lancaster campus, with great transport links. Whether you want to get in touch with your adventurous side, canyoning through rock pools and waterfalls, or immerse yourself in nature on a peaceful countryside walk, there’s no shortage of new things to try or scenery to enjoy (and snap for sharing on your socials!).

With the perfect balance of city buzz and natural beauty, Lancaster has everything you need to make your university days unforgettable.



[cumbria.ac.uk/student-life/locations/](http://cumbria.ac.uk/student-life/locations/)

FIND OUT MORE



LOVE  
YOUR  
CAMPUS

# AMBLESIDE

As the only UK university campus within a UNESCO World Heritage Site, our Ambleside campus offers the opportunity to study in one of the UK's most stunning locations: the Lake District National Park. Explore the breathtaking Lake District and level up your social media game with gorgeous shots of fells, picturesque lakes, and all your outdoorsy adventures. Picture yourself paddleboarding with friends across Lake Windermere or hiking some of the UK's most stunning peaks – you'll truly be living your best student life in Ambleside.

But it's not just about the outdoors – after a day of exploring, cosy up in a café with a hot chocolate, make the most of our vibrant restaurant scene, or grab drinks with course-mates at one of Ambleside's buzzing bars and pubs. And, for a touch of city life, the lively cities of Lancaster, Carlisle and Preston are all within easy reach.

Join us in Ambleside for a truly unique student experience, surrounded by unbeatable natural beauty and endless opportunities for adventure.



[cumbria.ac.uk/student-life/locations/](https://cumbria.ac.uk/student-life/locations/)

FIND OUT MORE



# LOVE YOUR CAMPUS

# BARROW AND WORKINGTON

How does hitting the beach after a day of lectures sound? Barrow is a historic coastal town full of fun spots and miles of spectacular coastline to explore. Gather your friends and soak up the sea views on the Walney Coastal Path, taking in beaches, rugged dunes and salt marshes along the way. Or, catch a glimpse of grey seals and natterjack toads at Barrow's nature reserves, before blowing off some steam at the skatepark – if that's your thing!

But Barrow doesn't just have beautiful scenery and wildlife. You can revise your lecture notes while getting your caffeine fix at a quirky café in town. And, after dark, Barrow buzzes with cosy pubs, lively clubs and cocktail bars to take your

night wherever you fancy. Barrow's welcoming community, stunning coastline and exciting nightlife will make your university experience a time to remember.



FIND OUT MORE BARROW



FIND OUT MORE WORKINGTON

[cumbria.ac.uk/student-life/locations/](http://cumbria.ac.uk/student-life/locations/)



# LOVE YOUR CAMPUS

# LONDON

We bring a touch of Cumbrian charm to the Big Smoke with our East London campus, offering a cosy campus experience amidst the hustle and bustle of the capital. Going to university is all about expanding your horizons and immersing yourself in new and exciting experiences – and where better to do that than one of the world’s most multicultural and dynamic cities?

Going to university is all about expanding your horizons and immersing yourself in new and exciting experiences – and where better to do that than one of the world’s most multicultural and dynamic cities?

Our London base is situated in the heart of the London Docklands with its rich and diverse

history, well connected to the rest of the city. There’s plenty of coffee shops and parks nearby as well as impressive views of the skyscraper buildings. Being in London, there’s always something to see and do, just around the corner from your lectures. Our welcoming campus environment will make you feel at home in the capital.



[cumbria.ac.uk/student-life/locations/](http://cumbria.ac.uk/student-life/locations/)

FIND OUT MORE



# LOVE YOUR INSTITUTE

# OUR INSTITUTES

Will your story be one of changing the world? For you, studying at university is about gaining the skills you need to go on and work towards the greater good of society.

Will your story be one of striving for a particular career? For you, your university education needs to catapult you into your dream career, where you stand out against your competitors with an experienced edge.

Will your story be one of pursuing your passion? For you, studying at university is about getting the chance to explore your interests much more. A career will come in the future, but for now it's about the experience and developing yourself.

Whatever you want your story to be and whatever your reasons for wanting to study at university, we have hundreds of courses across four specialist institutes, which offer a range of flexible multidisciplinary courses: Institute of Engineering, Computing and Advanced Manufacturing; Institute of Science and Environment; Institute of Health; Institute of Education, Arts & Society; and Institute of Industry, Business and Leadership.

**Love your story with them.**

[cumbria.ac.uk/study/academic-departments/](http://cumbria.ac.uk/study/academic-departments/)



# OUR RESEARCH IMPACT

Making a positive impact on our local areas, as well as the wider world, is a big part of what we do.

Our research forms a big part of that. Whilst our academics are leading researchers, we also aim to give our students the opportunities to participate and get involved wherever possible.

We care about sustainability, wellbeing, health, and social justice. We care. This is just some of our research impact.

We care about our local area; every farmer in the Lake District is set to receive 'What Did Farming Ever Do For Us?' by Professor Lois Mansfield, the first publication of its kind, setting out why famed cultural landscapes matter in the crusade for nature recovery and climate action.

We are supporting the education of new sonographers through a virtual North West Ultrasound academy, to tackle ultrasound workforce shortage.

We have a centre for research in health & society; a centre for national parks & protected areas; our learning, education & development research centre (LED); a centre for regional

economical development; an initiative for leadership and sustainability; a child, youth, family, and community network; a teacher education advancement network; a health and society knowledge exchange facility; an active ageing research group; an arts research initiative; a Med Tech research group and a social issues in medical imaging research group.

We care about positively impacting our world and improving the lived experience of people everywhere; from talks and project features at COP26, to reintroducing wildlife into the UK, to foetal facial recognition (listed as among the most important discoveries of 2017), to exploring the psychological impacts of domestic abuse.



# THE SMALL PRINT

## Disclaimer

This prospectus aims to answer your questions about life and academic provision on offer at the University of Cumbria and every effort has been taken to ensure the prospectus is accurate at the time of printing. You are encouraged to check the website before applying as this will contain the latest information on the University of Cumbria and the courses that we offer.

In exceptional circumstances, it can be necessary to amend the programmes and provision advertised (for example to meet a Professional Body's changing requirements). In such instances the University will take all reasonable steps to minimise disruption and the University will ensure that applicants are notified of any material changes as early as possible.

There may be occasions when the University withdraws or suspends recruitment to a course. In such circumstances, the University will advise applicants as early as possible, including suitable alternative options that may be available.

## Campus details

Carlisle Fusehill Street Campus  
University of Cumbria, Fusehill Street,  
Carlisle, Cumbria, CA1 2HH

Carlisle Brampton Road Campus  
University of Cumbria, Brampton Road,  
Carlisle, Cumbria, CA3 9AW

Ambleside Campus  
University of Cumbria, The Barn, Rydal Road,  
Ambleside, Cumbria, LA22 9BB

Lancaster Campus  
University of Cumbria, Bowerham Road,  
Lancaster, Lancashire, LA1 3JD

London Campus  
University of Cumbria, 58 E India Dock Road,  
London, E14 6JE

Barrow-in-Furness Campus  
Furness College, Channelside,  
Barrow-in-Furness, LA14 2PJ

Workington Campus  
Energus Building, Blackwood Road,  
Lillyhall Industrial Estate, Workington,  
CA14 4JW

## Our mission and ethics

As part of our ongoing commitment to sustainability, we have signed up to take part in an exciting programme led by the National Union of Students.

## Green Impact Scheme

Green Impact Universities and Colleges is an environmental accreditation scheme which helps people improve their working environments and positively impact the lives of their students whilst gaining recognition for their efforts. The scheme has worked with more than 50 universities and colleges, over 100 Students' Unions, and ever increasing numbers of community organisations.

## Waste and Recycling

The University of Cumbria is dedicated to substantially decreasing the amount of waste it sends to landfill by reducing waste, reusing where possible and recycling when necessary.

We aim to divert over 90% of our waste from landfill. To achieve this, we encourage all our students and staff to be conscientious about recycling during their time at the university.

To support our environmental target, we are pleased to be working with a local business, Cumbria Waste Group, for our main site waste management services. CWG were appointed to help improve the amount of waste being recycled by separating at source. The university now segregates into three streams – Paper & Card, Co-mingled (plastic, tins & glass) and non – recyclable.

CWG is responsible for emptying over 100 bins each week across our four main campus sites in Carlisle, Lancaster and Ambleside.

The University of Cumbria is a licensed waste carrier. Our licence number is CBDL135305.

This allows us to carry waste directly to waste recycling or disposal sites, or between our main campus and ancillary sites.

## Contact Information

If you have any questions about Cumbria, our courses, campuses, or facilities, please contact us.

**Phone: 01228 588588**

**Email: [enquirycentre@cumbria.ac.uk](mailto:enquirycentre@cumbria.ac.uk)**

# COURSE INDEX



COURSE INDEX

COURSE INDEX

## ADVANCE MANUFACTURING ENGINEERING

Advanced Manufacturing 31

## BUSINESS

Business Management 35  
 Global Business Management 35  
 International Business Management 35  
 Project Management 35

## COMPUTING

Computer Science 37

## CREATIVE & MEDIA ARTS

Animation & Visual Effects 41  
 Commercial Photography 41  
 Creative Advertising 41  
 Film & Television 41  
 Fine Art 41  
 Games Design 41  
 Games Development 41  
 Graphic Design 41  
 Illustration 41  
 Photography 41  
 User Experience and User Interface Design 41  
 Wildlife Media 41

## EDUCATION

Primary & Early Years Education 45  
 Primary Education (5-11): Inclusions with SEND 45

## HEALTH PROFESSIONS

Diagnostic Radiography 49  
 Occupational Therapy 49  
 Paramedic Science 49  
 Physiotherapy 49  
 Midwifery 49  
 Nursing Associate 49  
 Nursing: Adult Nursing 49  
 Nursing: Children's Nursing 49  
 Nursing: Learning Disabilities Nursing 49  
 Nursing: Mental Health Nursing 49

## LAW & CRIMINOLOGY

Criminology 53  
 Criminology with Applied Psychology 53  
 Criminology with Forensic Investigation 53  
 Law 53

## OUTDOORS & FORESTRY

Forest Management 57  
 Forestry 57  
 Outdoor Adventure & Environmental Studies 57  
 Outdoor Education & Experiential Learning 57  
 Outdoor Education 57  
 Outdoor Leadership 57

## POLICING & SECURITY INTELLIGENCE

Professional Policing 59  
 Security Intelligence & Investigative Practice 59

## PSYCHOLOGY

Psychology 61  
 Psychology with Counselling & Psychotherapy 61

## SCIENCE & CONSERVATION

Animal Conservation Science 65  
 Applied Chemistry 65  
 Biomedical Sciences 65  
 Forensic Science 65  
 Environmental Science 65  
 Geography 65  
 Marine & Freshwater Conservation 65  
 Woodland Ecology & Conservation 65  
 Zoology 65

## SOCIAL WORK, HEALTH & WELLBEING

Assistant Practitioner in Health & Social Care 69  
 Children & Young People's Health & Wellbeing 69  
 Health & Social Care 69  
 Social Work 69  
 Working with Children & Families 69

## SPORT

Sport, Coaching & Physical Education 73



**#LOVEYOURSTORY**



University of  
**CUMBRIA**